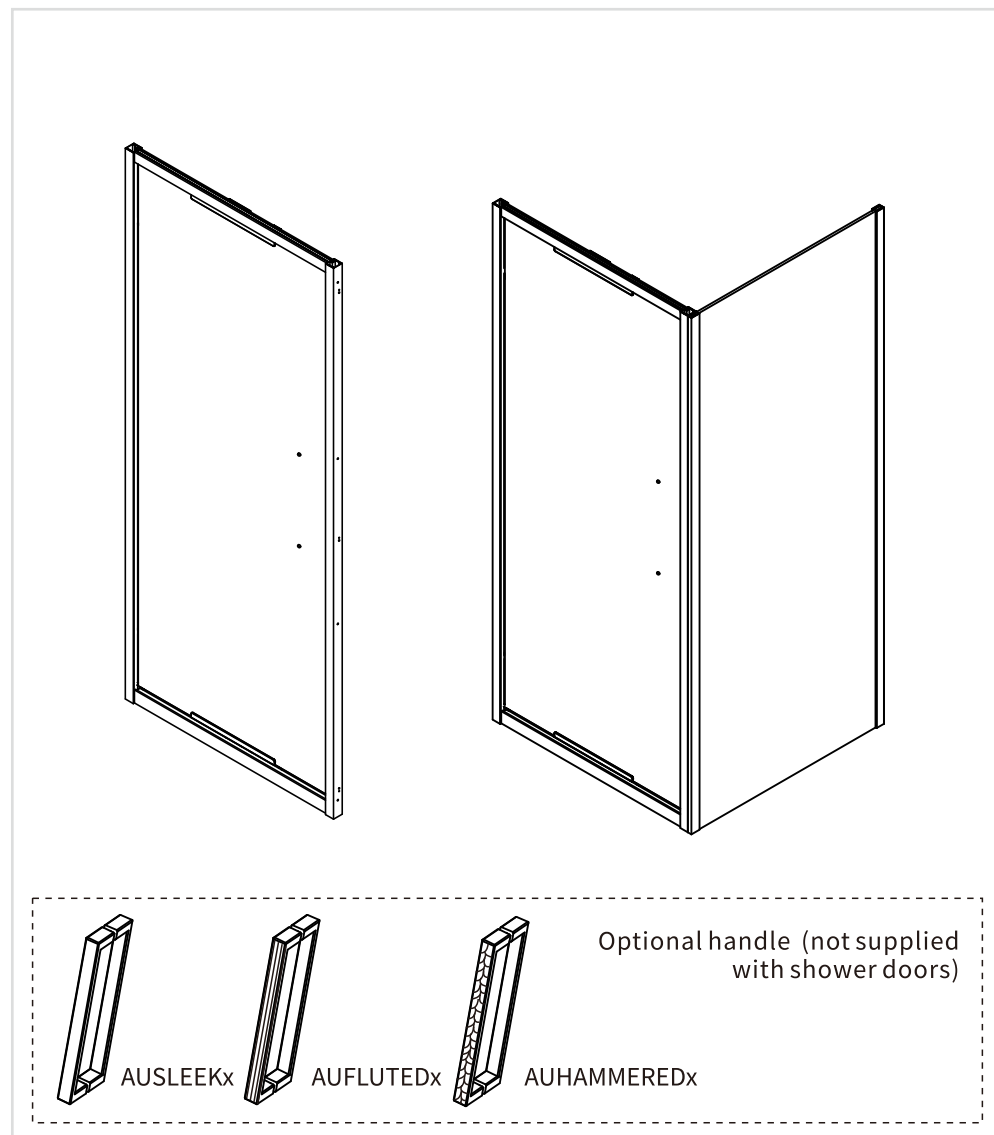


ASURA

Infold Door & Side Panel



PRODUCT CODES:

AUIDSC0800
AUIDBC0800
AUIDFC0800
AUIDVC0800
AUIDBZC0800
AUIDTC0800
AUIDSC0900
AUIDBC0900
AUIDFC0900
AUIDVC0900
AUIDBZC0900
AUIDTC0900
AUIDSC1000
AUIDBC1000
AUIDFC1000
AUIDVC1000
AUIDBZC1000
AUIDTC1000

AUIDSPSC0800
AUIDSPBZC0800
AUIDSPFC0800
AUIDSPVC0800
AUIDSPTC0800
AUIDSPBC0800
AUIDSPSC0900
AUIDSPBZC0900
AUIDSPFC0900
AUIDSPVC0900
AUIDSPTC0900
AUIDSPBC0900

1. Pre-Installation Checklist

✓ Before You Begin:

- Ensure all tiling/grouting is complete.
- Shower tray **must be level and sealed** to tiles.
- Verify door dimensions match your space (see Section 3).
- Check for hidden pipes/cables before drilling.

⚠ Safety Notes:

- **Two people required** for installation (glass is heavy!).
- Wear gloves when handling glass edges.

2. Unpacking & Components

Confirm all parts are present:

- Please refer to all components included on following page titled “COMPONENTS”

Missing/Damaged Parts?

Contact Crosswater immediately: ☎0345 873 8840.

3. Step-by-Step Installation

A. Frame Assembly

1) Mark Drill Points:

- Use a spirit level to mark vertical lines for wall profiles.
- Drill 6mm holes at marked points; insert wall plugs.

2) Attach Wall Profiles:

- Secure profiles with ST4x50mm screws (×8 total).
- Cover ends with profile caps if any.

B. Door Installation

3) Hang the Door:

- Following the instruction to assemble the door, ensure door is fully secured.
- Make necessary adjustment if door doesn't close smoothly.

4) Apply Seals:

- Install necessary seals provided on door and side panel if any.

C. Final Checks

5) Level & Secure:

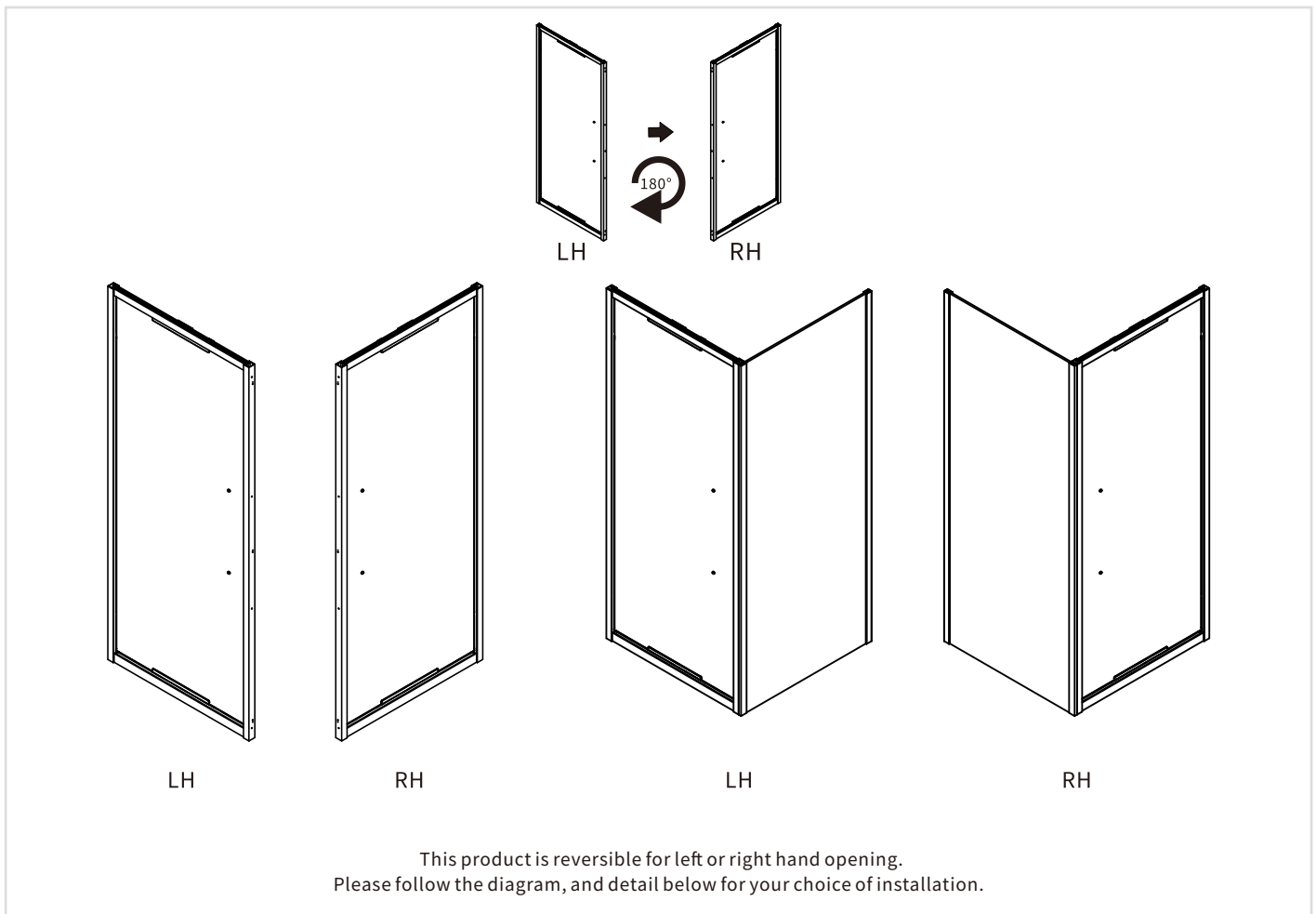
- Confirm door is level; tighten all screws.
- Let silicone cure for 24 hours before use.

4. Care & Maintenance

- **Cleaning:** Use only **pH-neutral soapy water** (pH 6.8–7.2).
- **Avoid:** Abrasives, solvents, or acidic cleaners.

Ensure seals are flush to prevent leaks.

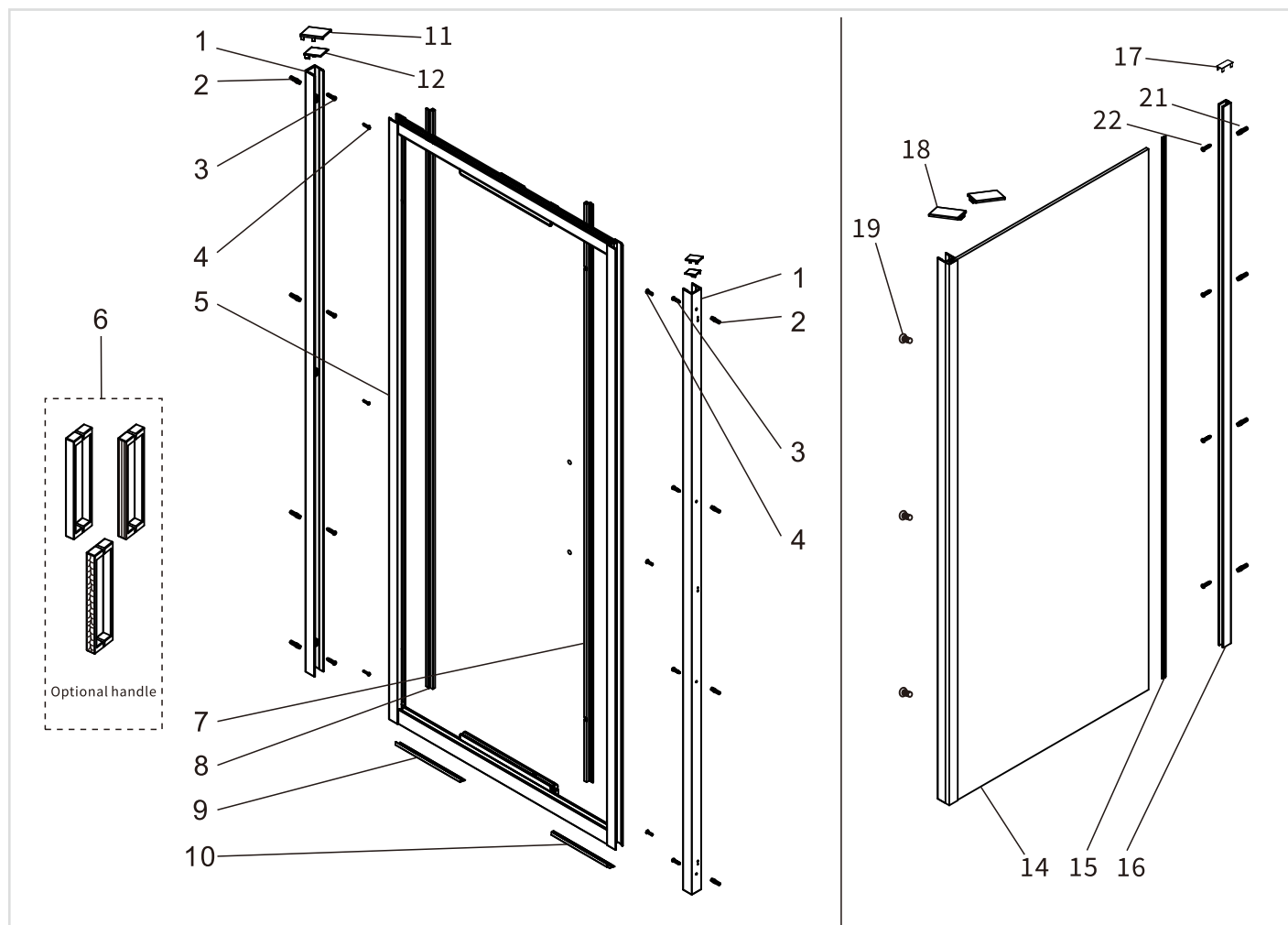
ORIENTATION







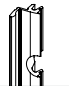
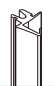






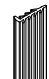
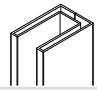








Tools Required (not supplied):

Spirit Level		Torque Screw Driver	
Pencil		Snips	
Drill		6mm Drill Bit	
Silicone		Measuring Tape	
Knife			

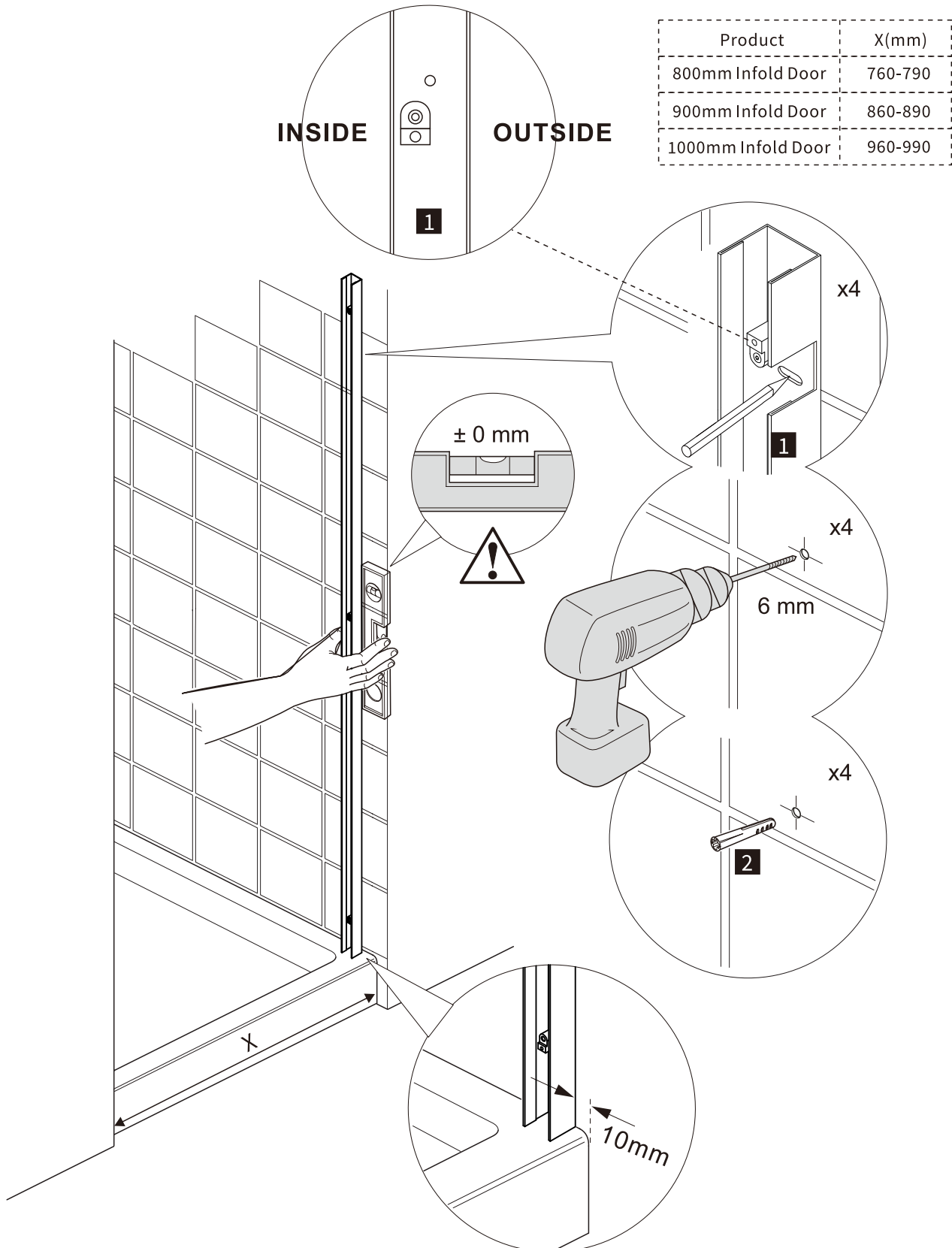
COMPONENTS



1		Wall profile x2
2		Wall Plug x8
3		ST4x50mm Screw x8
4		M4*24 Screw x6
5		Door x1
6		Optional handle (not supplied with shower door) x1
7		Seal x1
8		Seal x1
9		Bottom Seal x1
10		Bottom Seal x1
11		Wall profile cap x2
12		Adjustment profile cap x2
13		Allen Key 2.5mm x1 3mm x1
14		Side panel x1
15		Wedge seal x1
16		Wall profile x1
17		Wall profile cap x1
18		Cap LH x1 RH x1
19		M4x16mm Screw x3
20		Wedge gasket tool x1
21		Wall Plug x4
22		ST4x50mm Screw x4

INSTALLATION

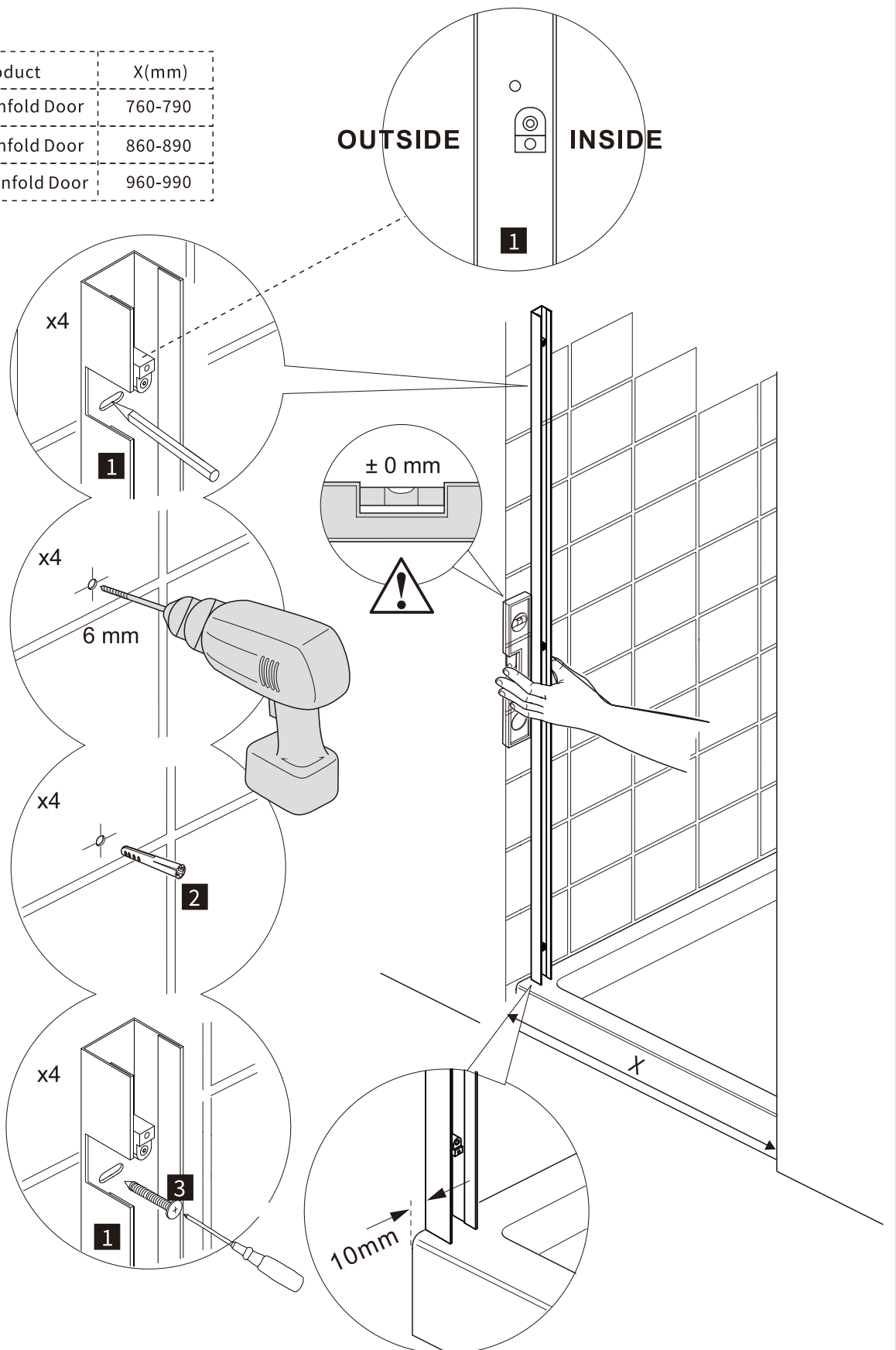
1



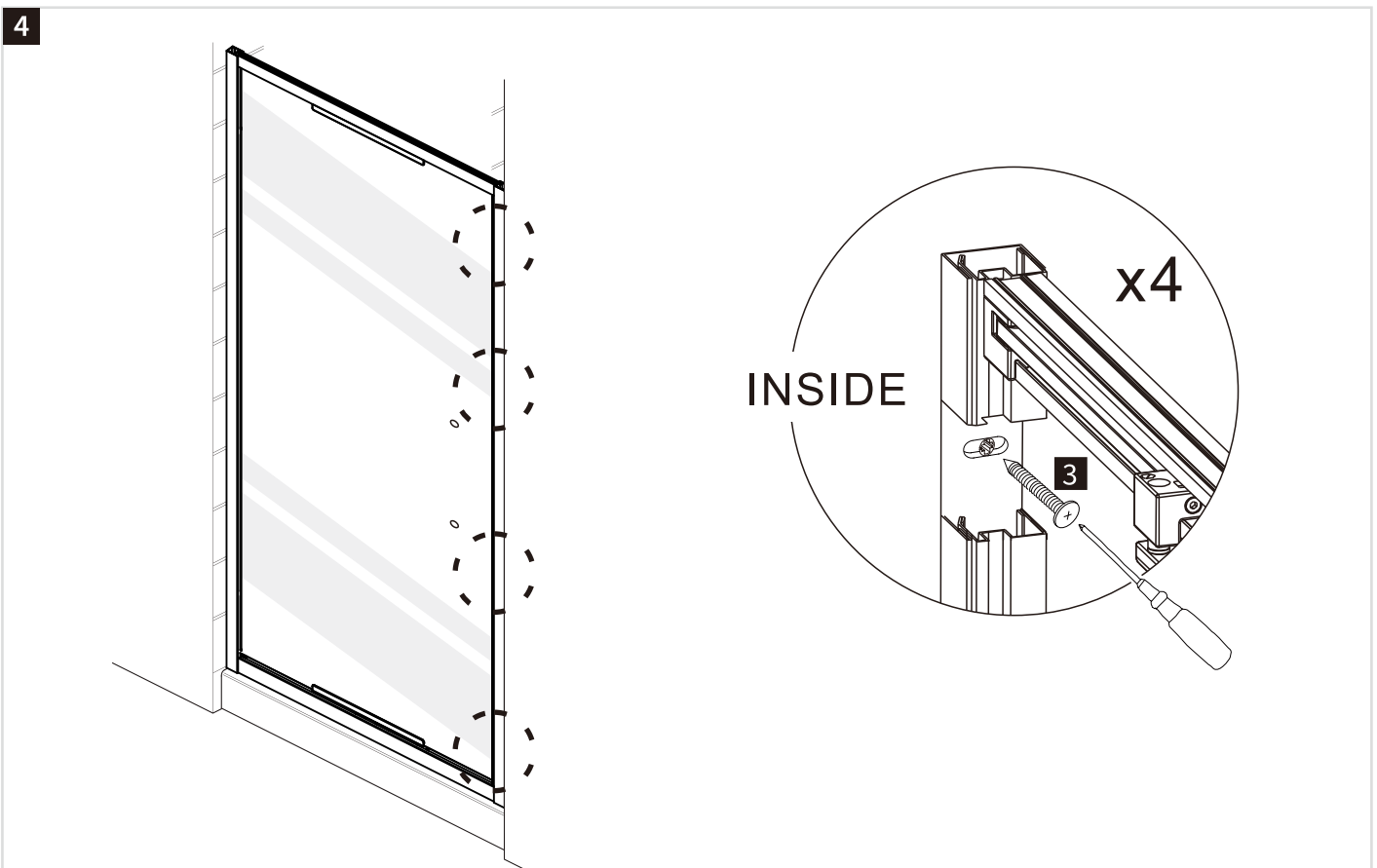
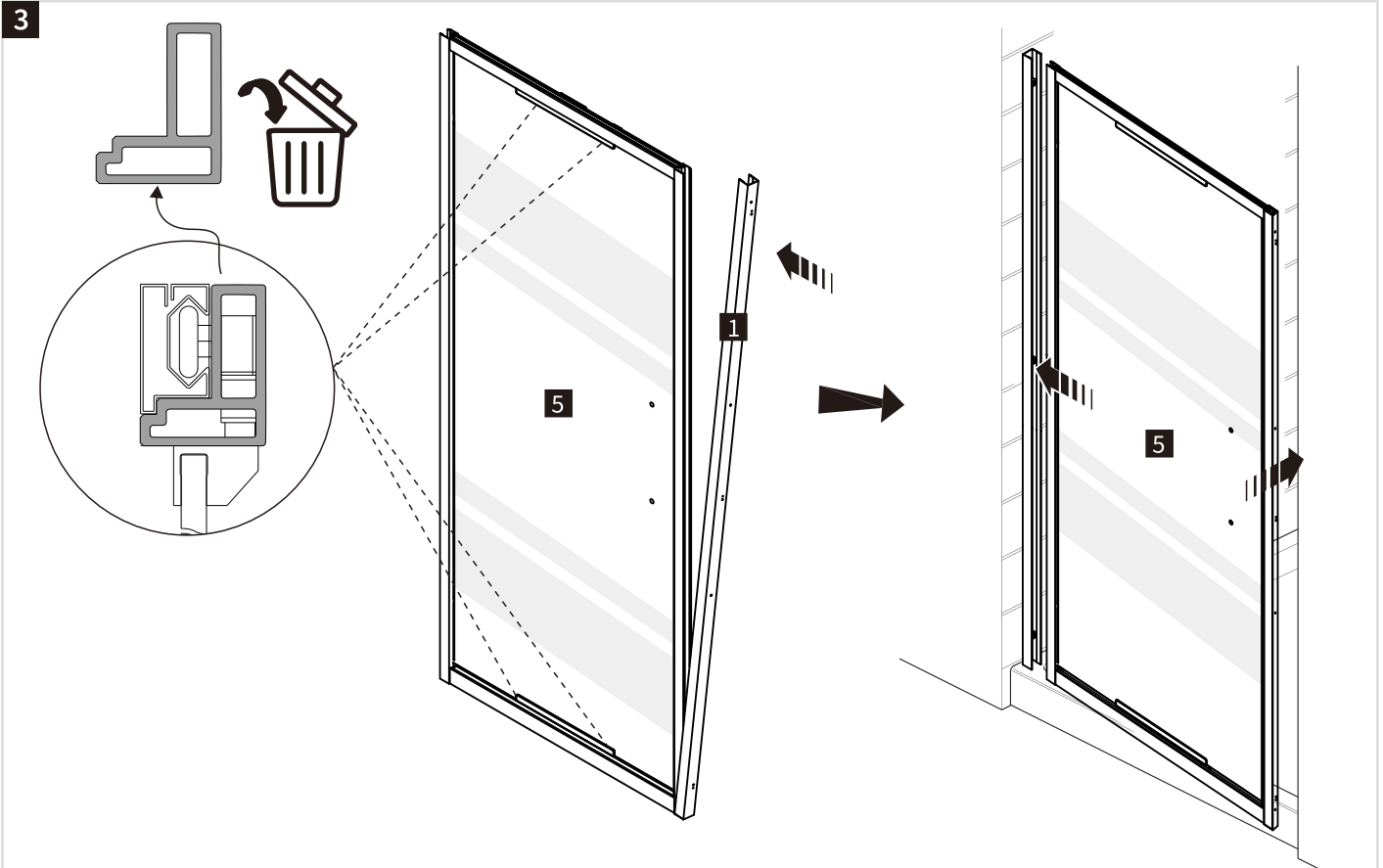
INSTALLATION

2

Product	X(mm)
800mm Infold Door	760-790
900mm Infold Door	860-890
1000mm Infold Door	960-990

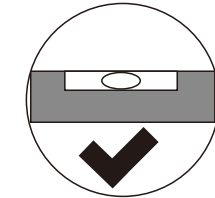
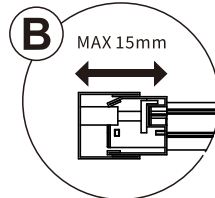
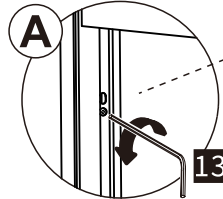
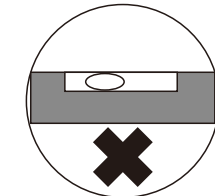
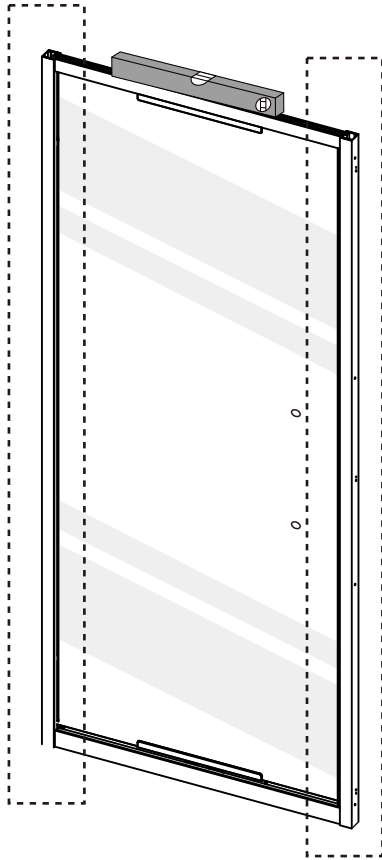


INSTALLATION



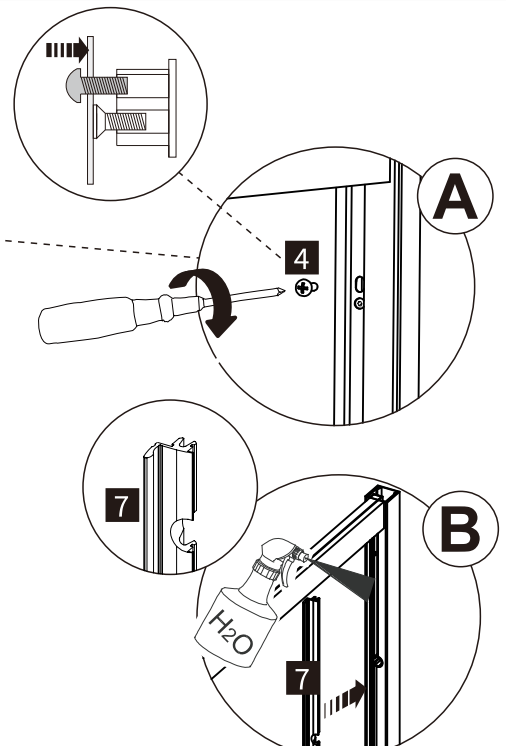
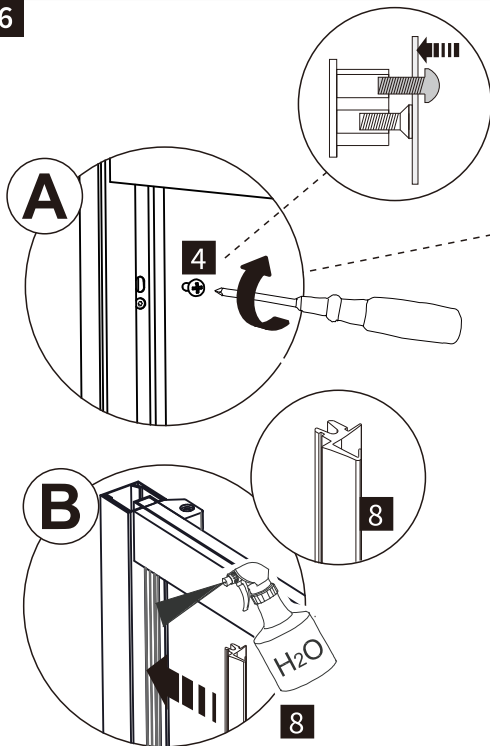
INSTALLATION

5



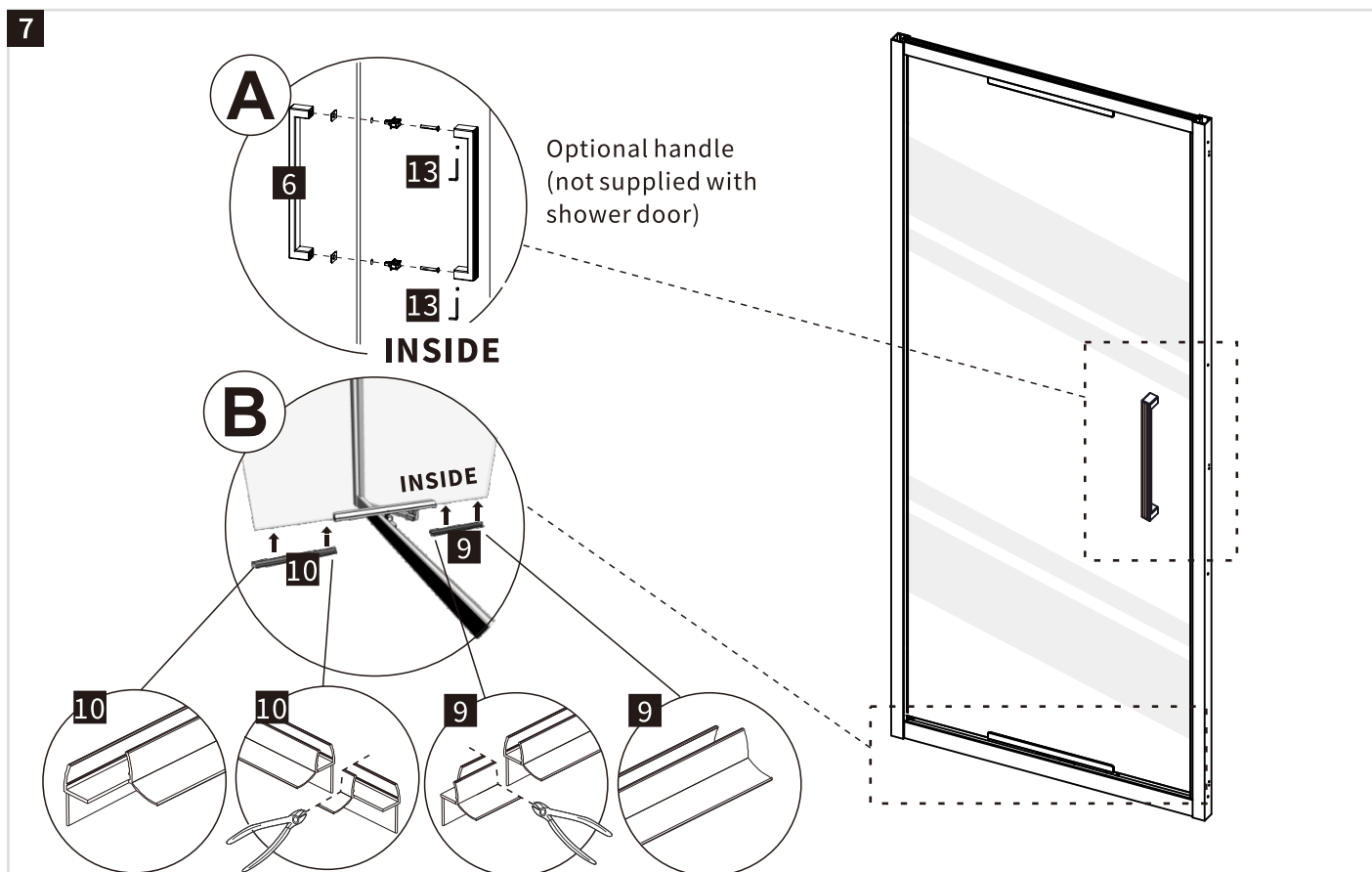
Ensure the door is level.
Adjust if needed, then lock
the screw till it touches and
supports the door frame.

6

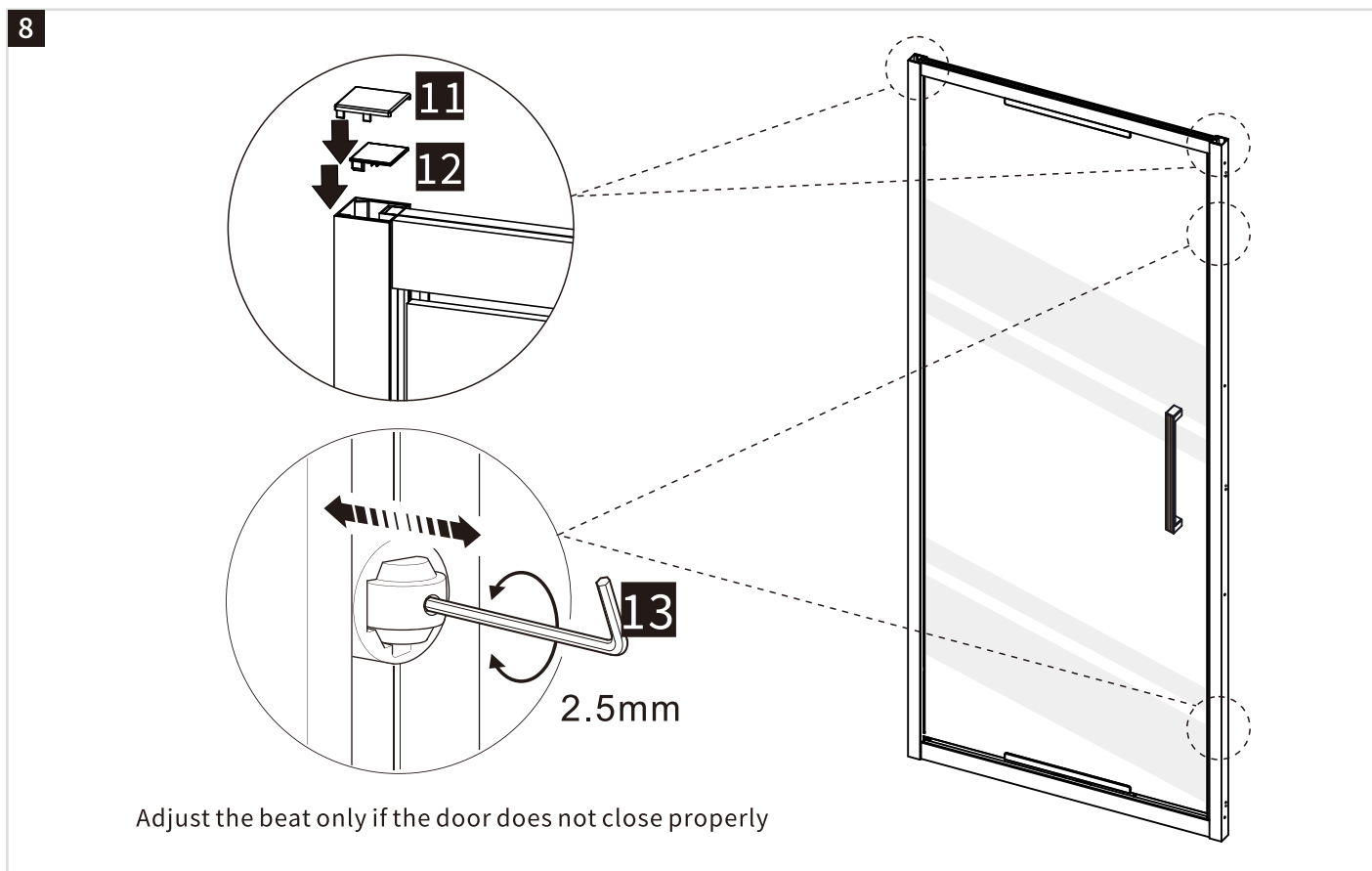


INSTALLATION

7

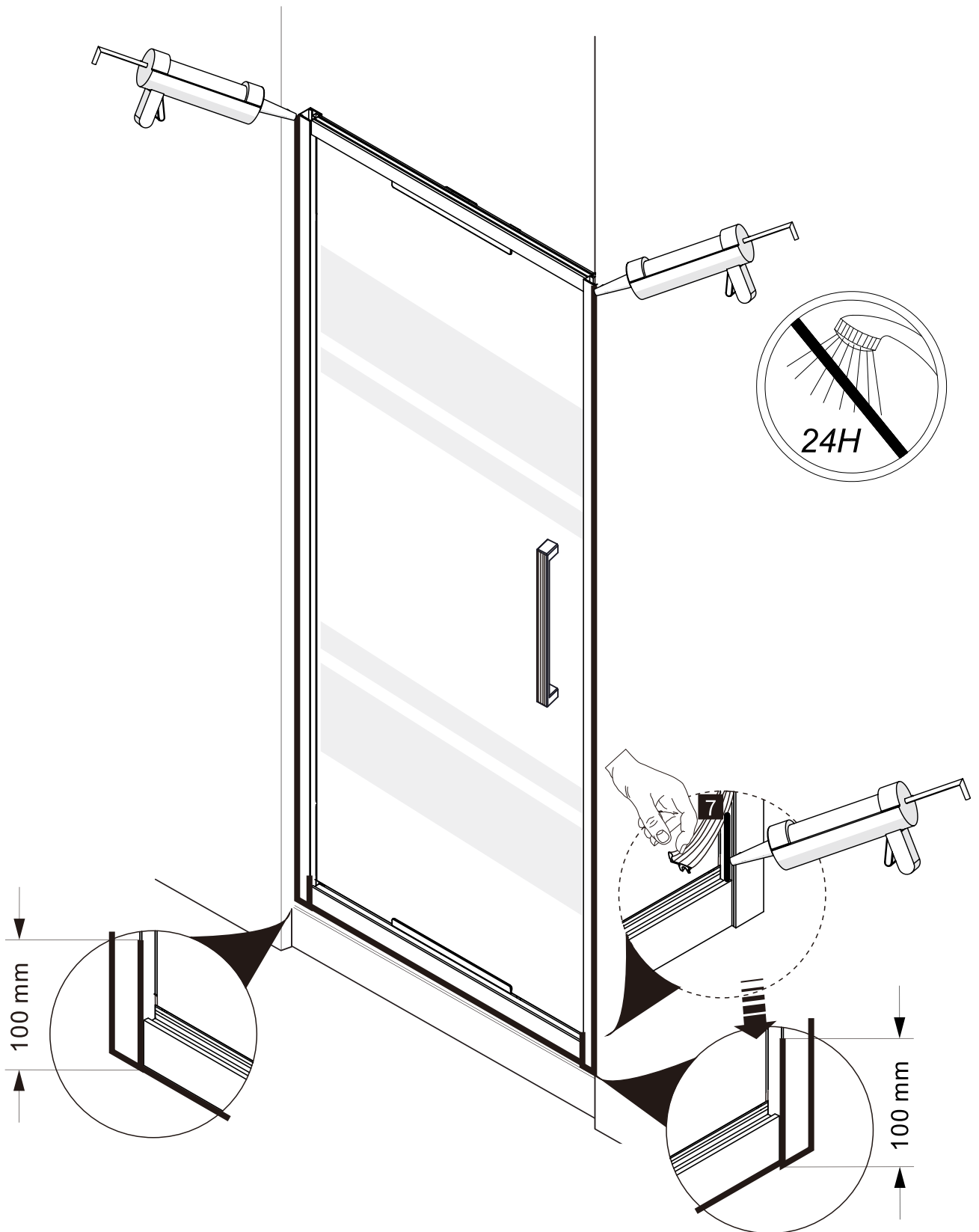


8



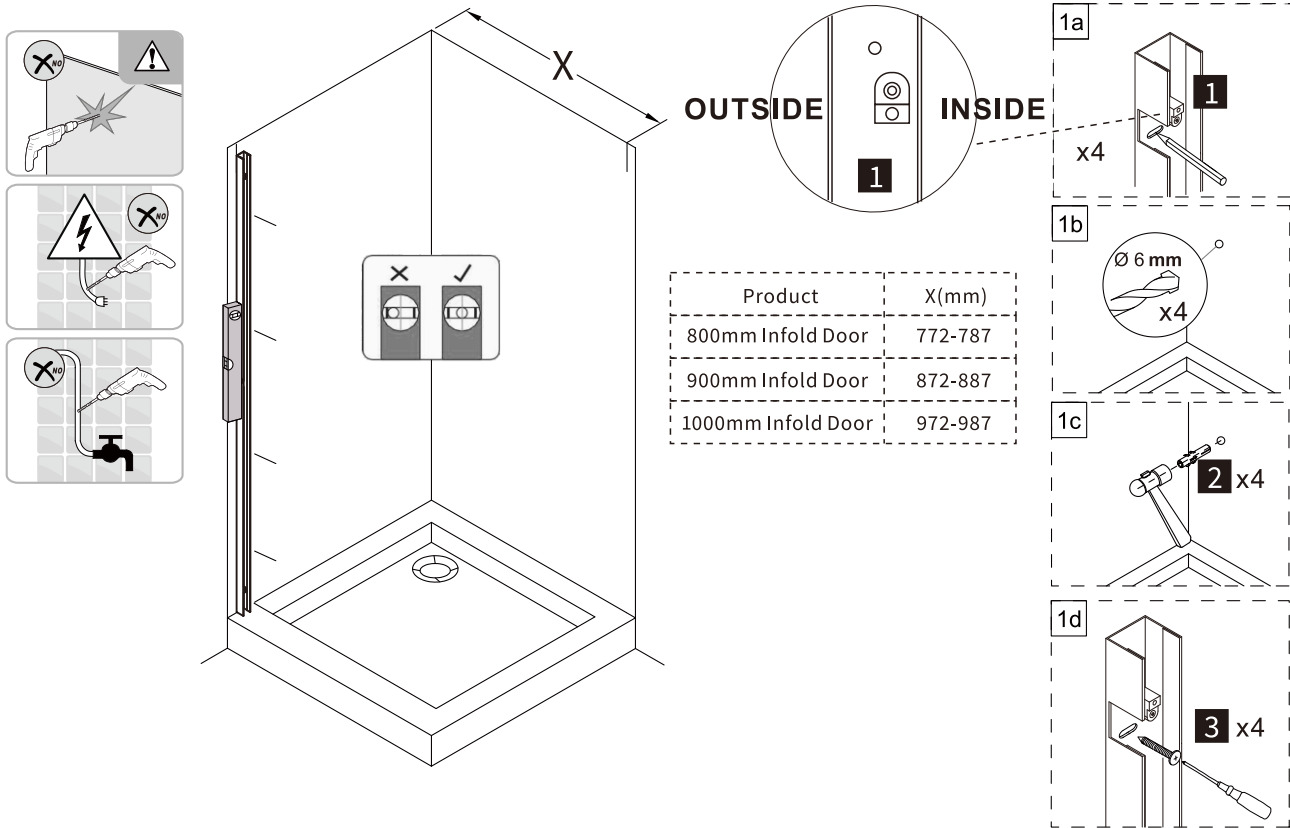
INSTALLATION

9

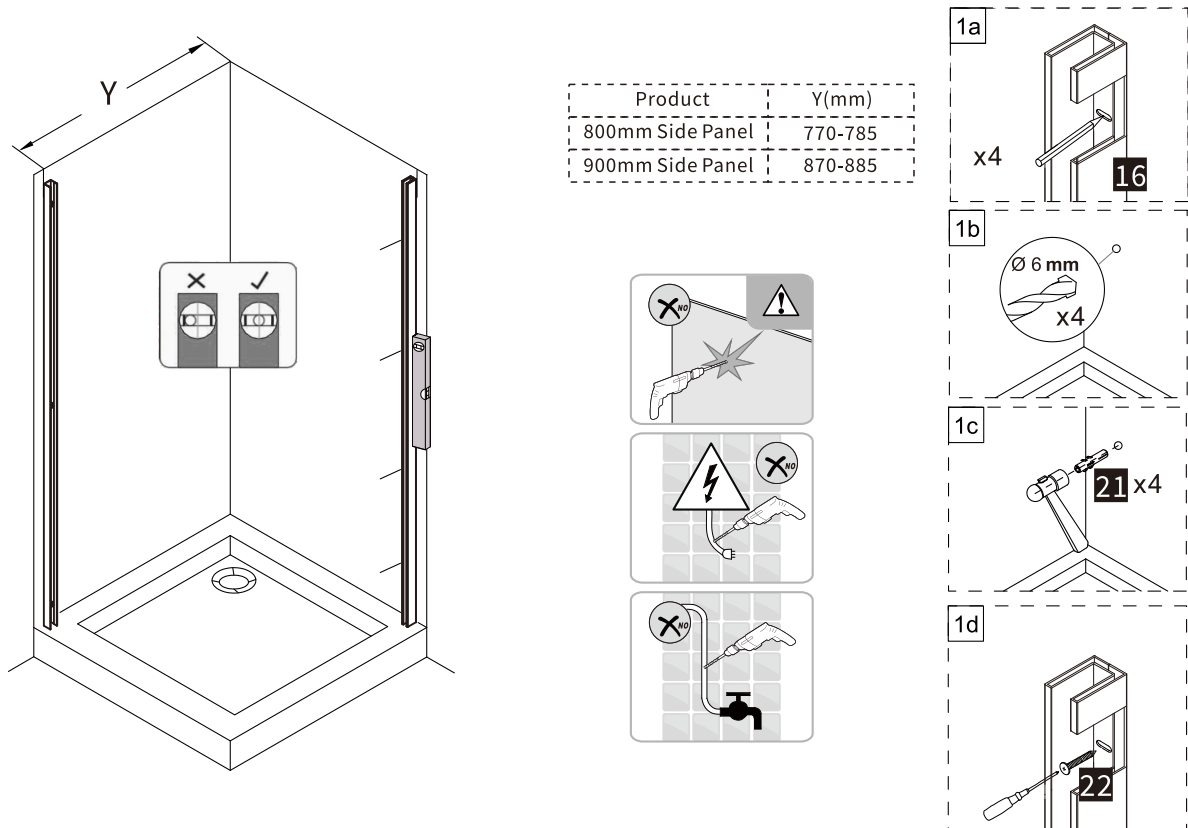


INSTALLATION

10

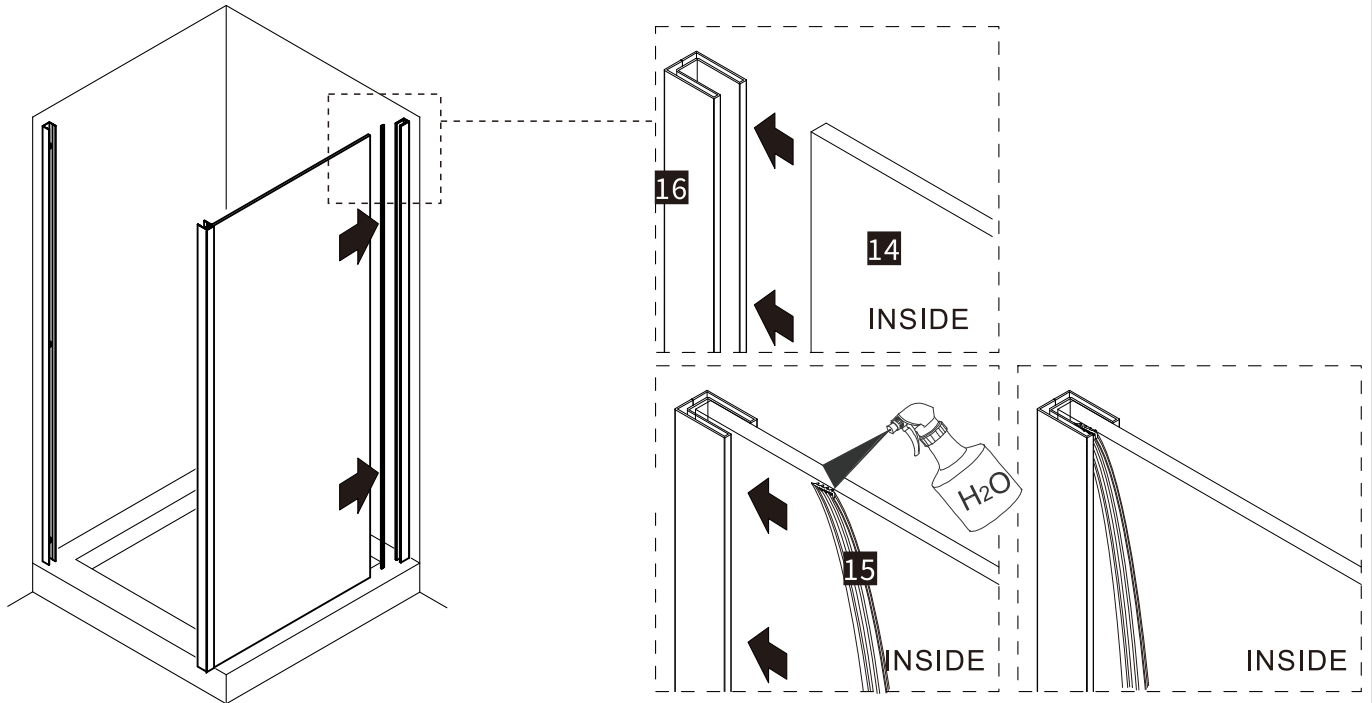


11

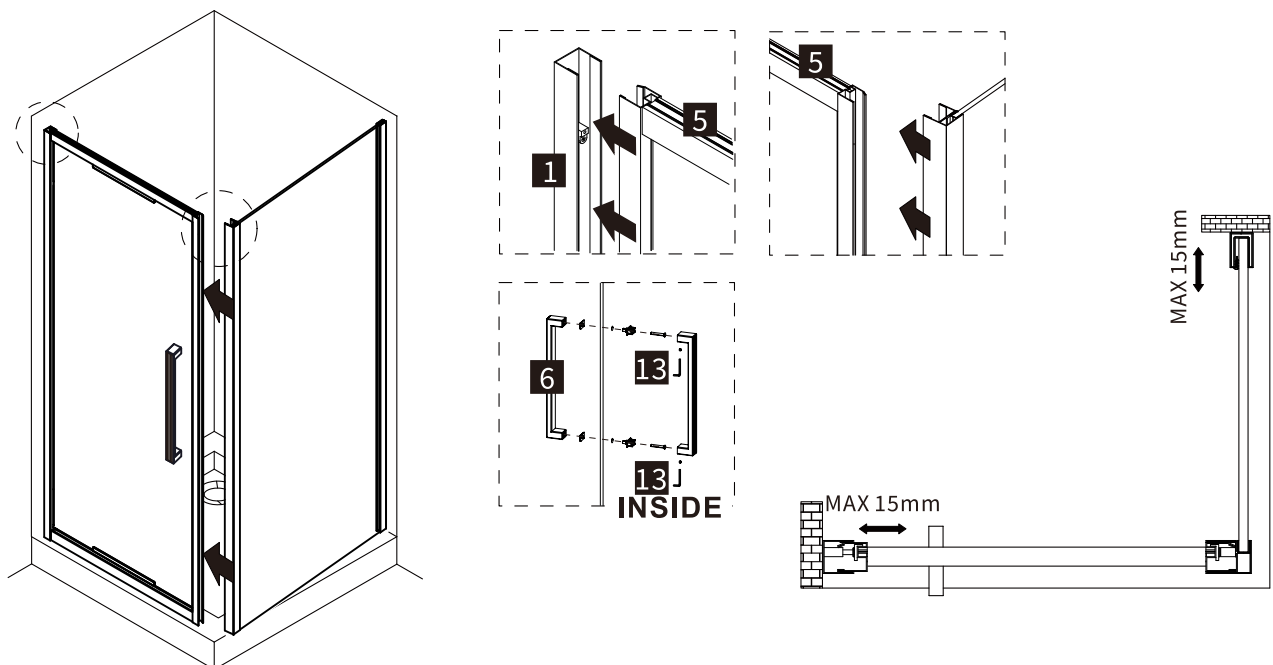


INSTALLATION

12



13

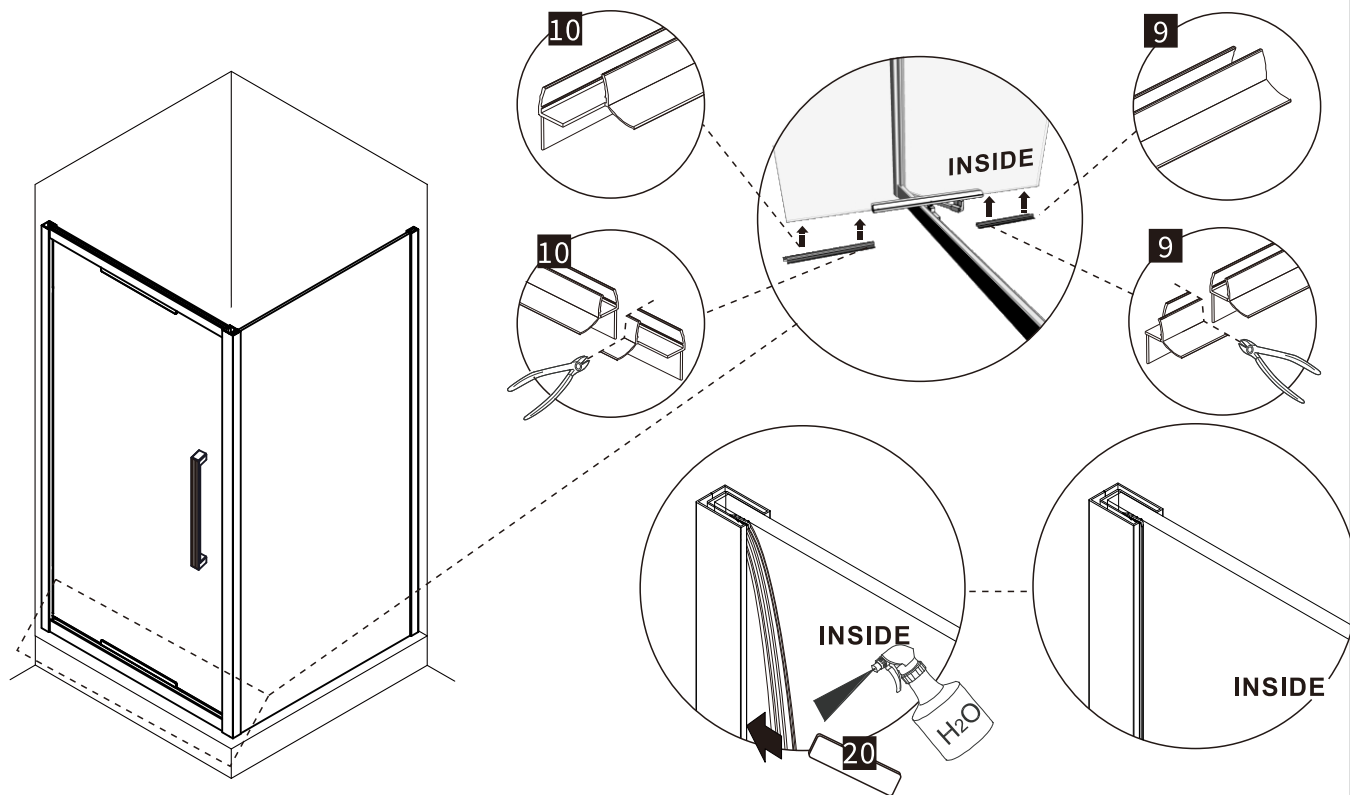


14

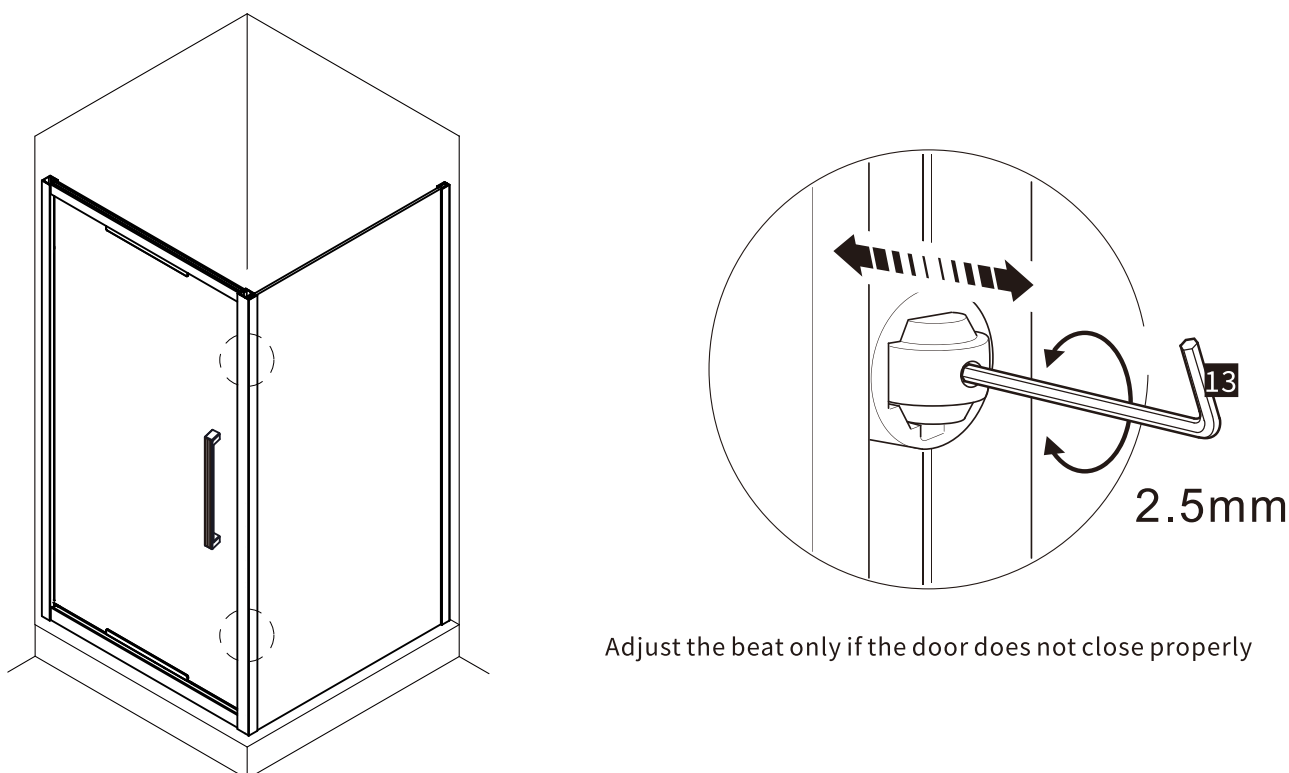


INSTALLATION

16

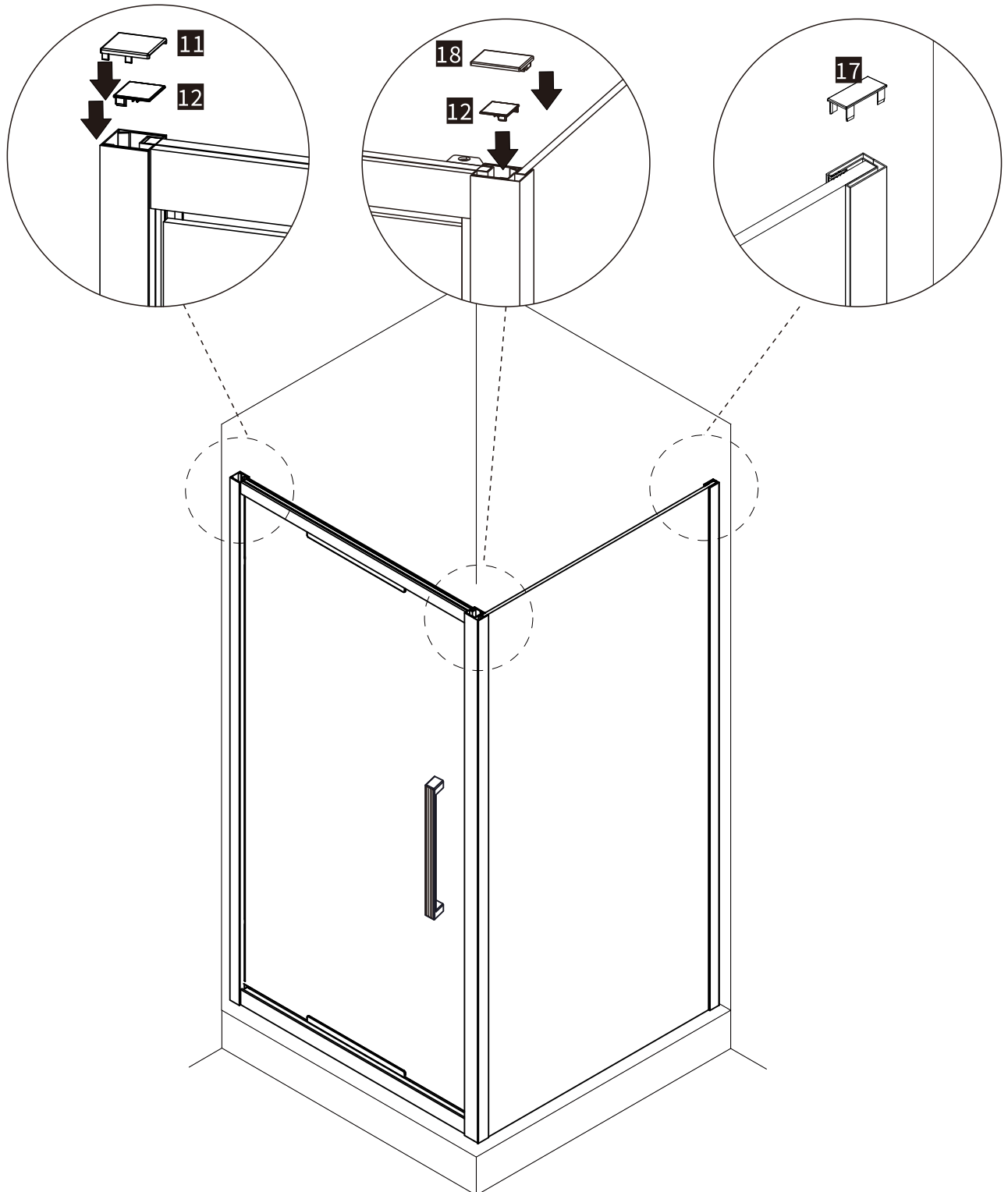


17



INSTALLATION

18



INSTALLATION

19

