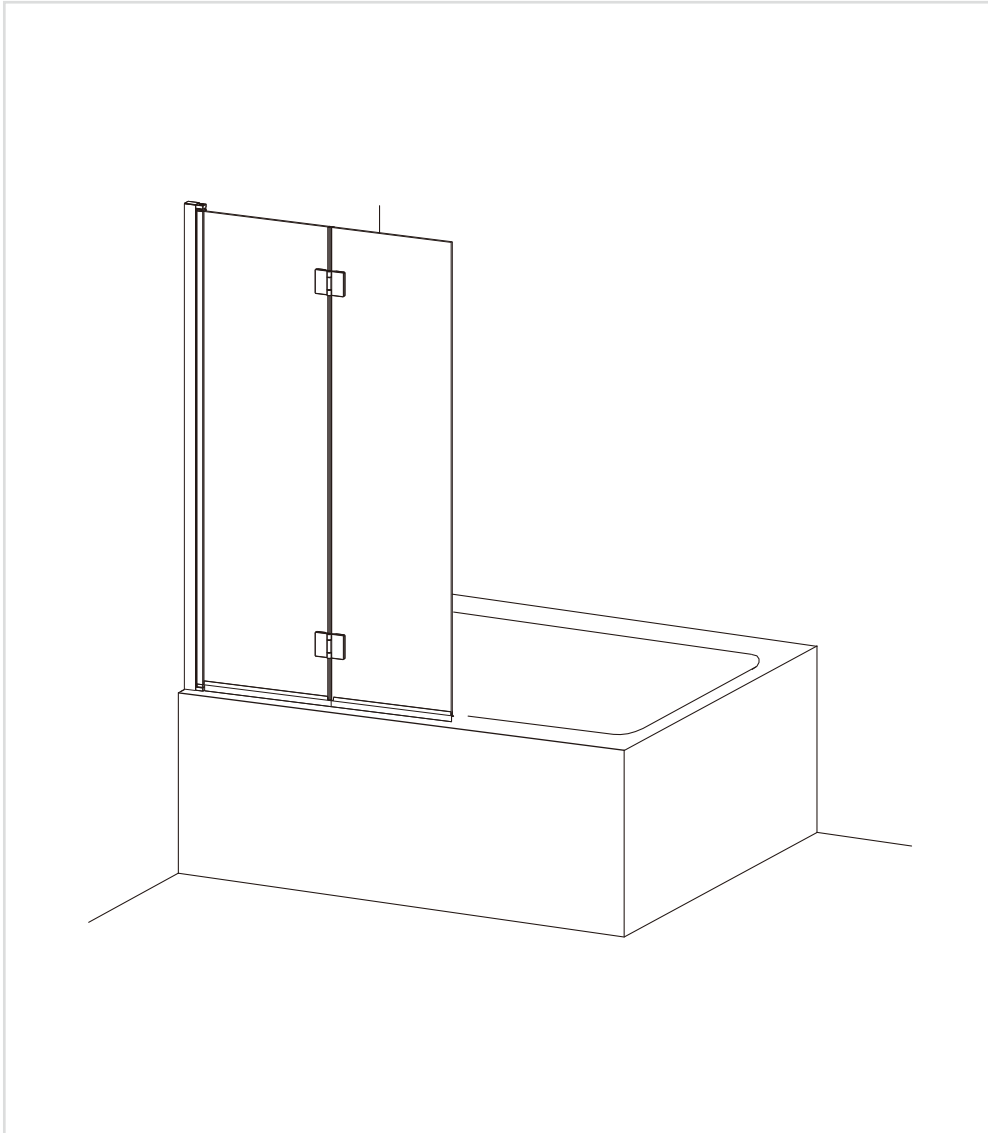


# ASURA

Fully Folding Bath Screen



**PRODUCT CODES:**

AUSFFBSC  
AUSFFBSMB  
AUSFFBSF  
AUSFFBSV  
AUSFFBSBZ  
AUSFFBST

## 1. Pre-Installation Checklist

### ☑ Before You Begin:

- Ensure all tiling/grouting is complete.
- Bathtub **must be level and sealed** to tiles.
- Verify door dimensions match your space (see Section 3).
- Check for hidden pipes/cables before drilling.

### ⚠ Safety Notes:

- **Two people required** for installation (glass is heavy!).
- Wear gloves when handling glass edges.

## 2. Unpacking & Components

### Confirm all parts are present:

- Please refer to all components included on following page titled “COMPONENTS”

### Missing/Damaged Parts?

Contact Crosswater immediately: ☎0345 873 8840.

## 3. Step-by-Step Installation

### A. Frame Assembly

#### 1) Mark Drill Points:

- Use a spirit level to mark vertical lines for wall profiles.
- Drill 6mm holes at marked points; insert wall plugs.

#### 2) Attach Wall Profiles:

- Secure profiles with ST4x50mm screws (×3 total).
- Cover ends with profile caps if any.

### B. Door Installation

#### 3) Hang the Door:

- Following the instruction to assemble the door, ensure door is fully secured.
- Make necessary adjustment if door doesn't close smoothly.

#### 4) Apply Seals:

- Install necessary seals provided on door and side panel if any.

### C. Final Checks

#### 5) Level & Secure:

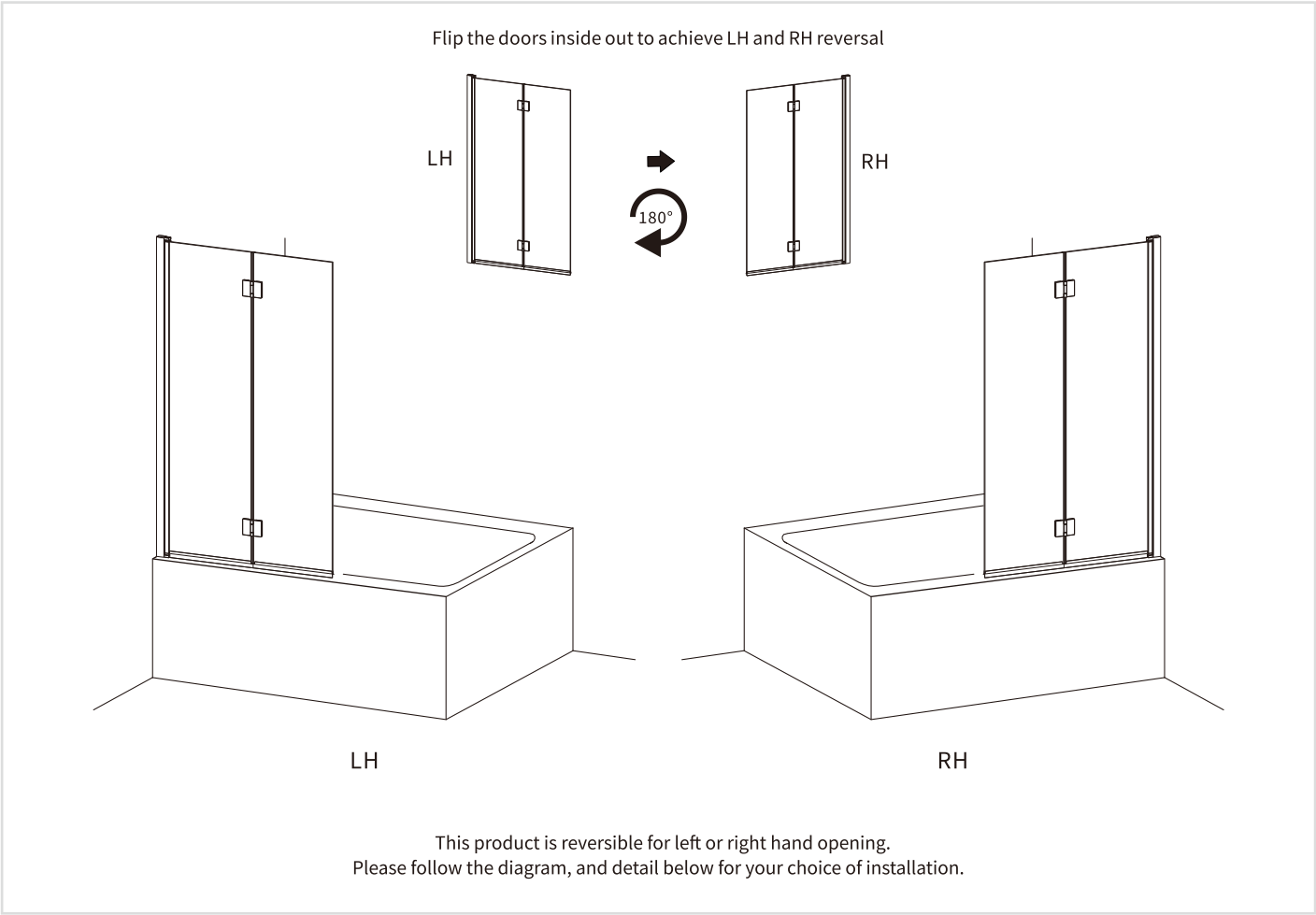
- Confirm door is level; tighten all screws.
- Let silicone cure for 24 hours before use.

## 4. Care & Maintenance

- **Cleaning:** Use only **pH-neutral soapy water** (pH 6.8–7.2).
- **Avoid:** Abrasives, solvents, or acidic cleaners.

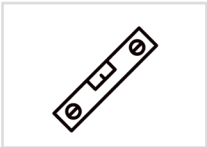
Ensure seals are flush to prevent leaks.

ORIENTATION



Tools Required (not supplied):

Spirit Level



Pencil



Drill



Silicone



Knife



Torque Screw Driver



Snips

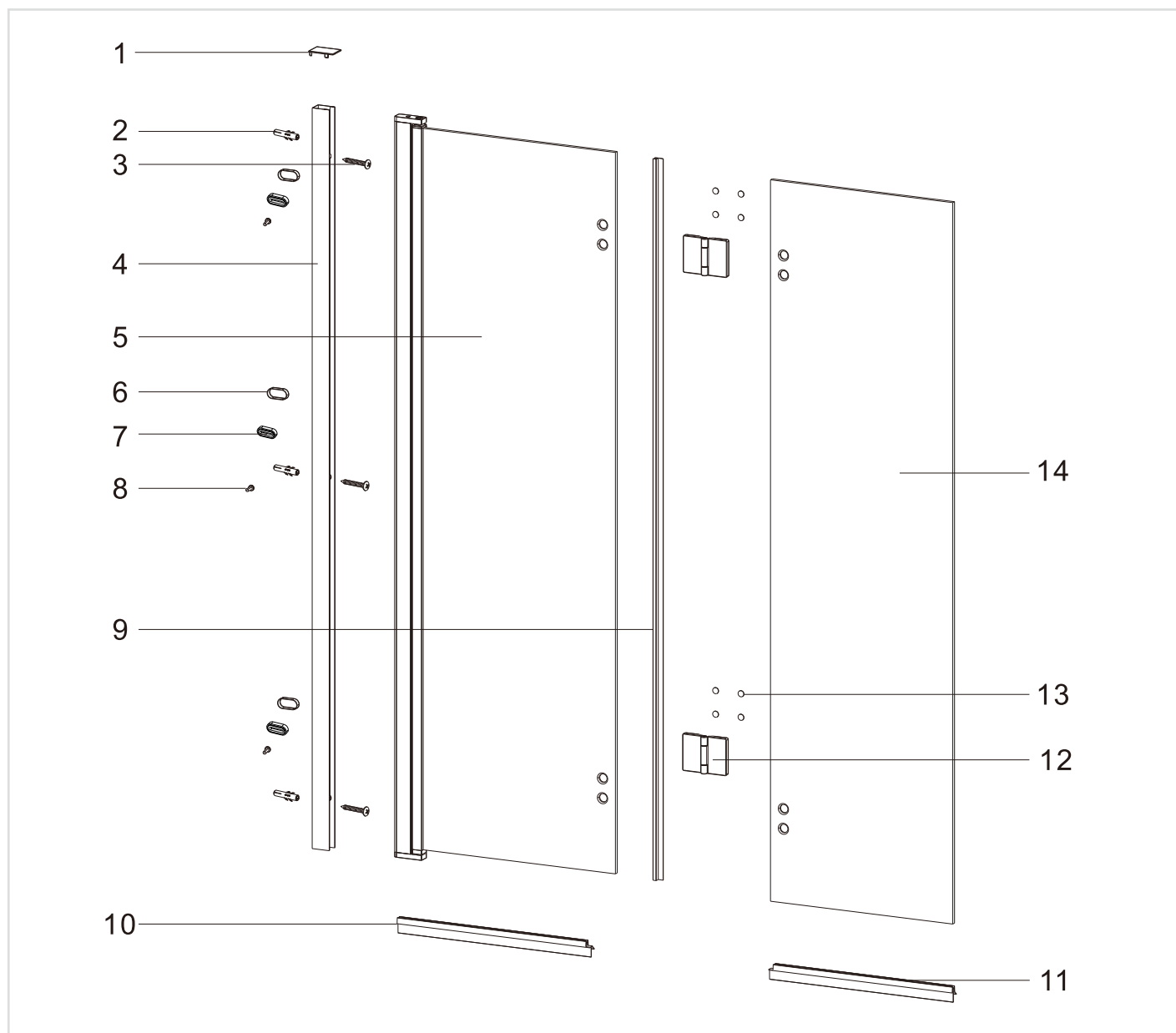










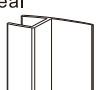
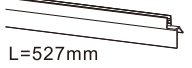
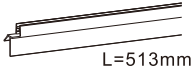
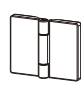



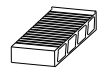
6mm Drill Bit



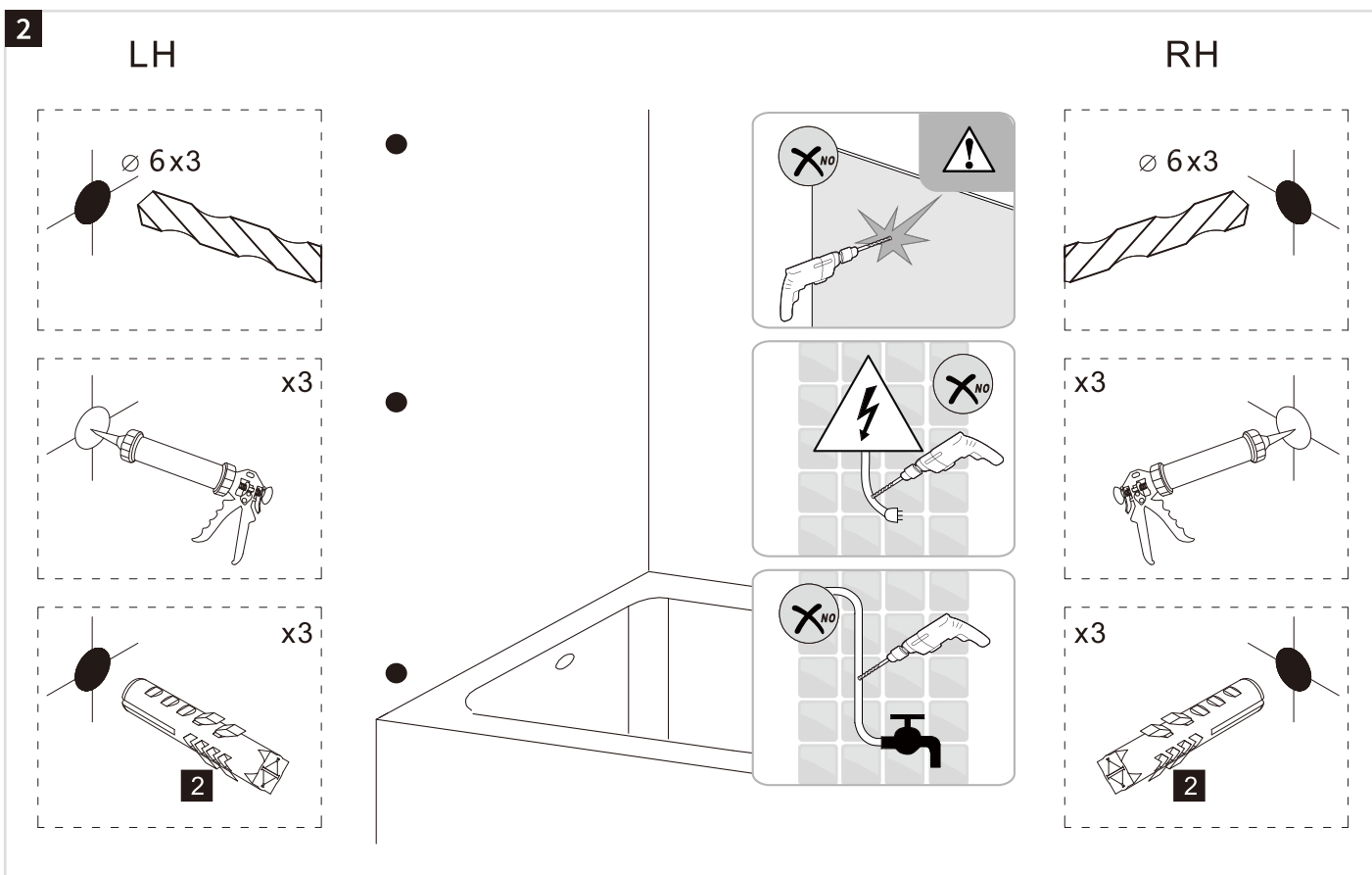
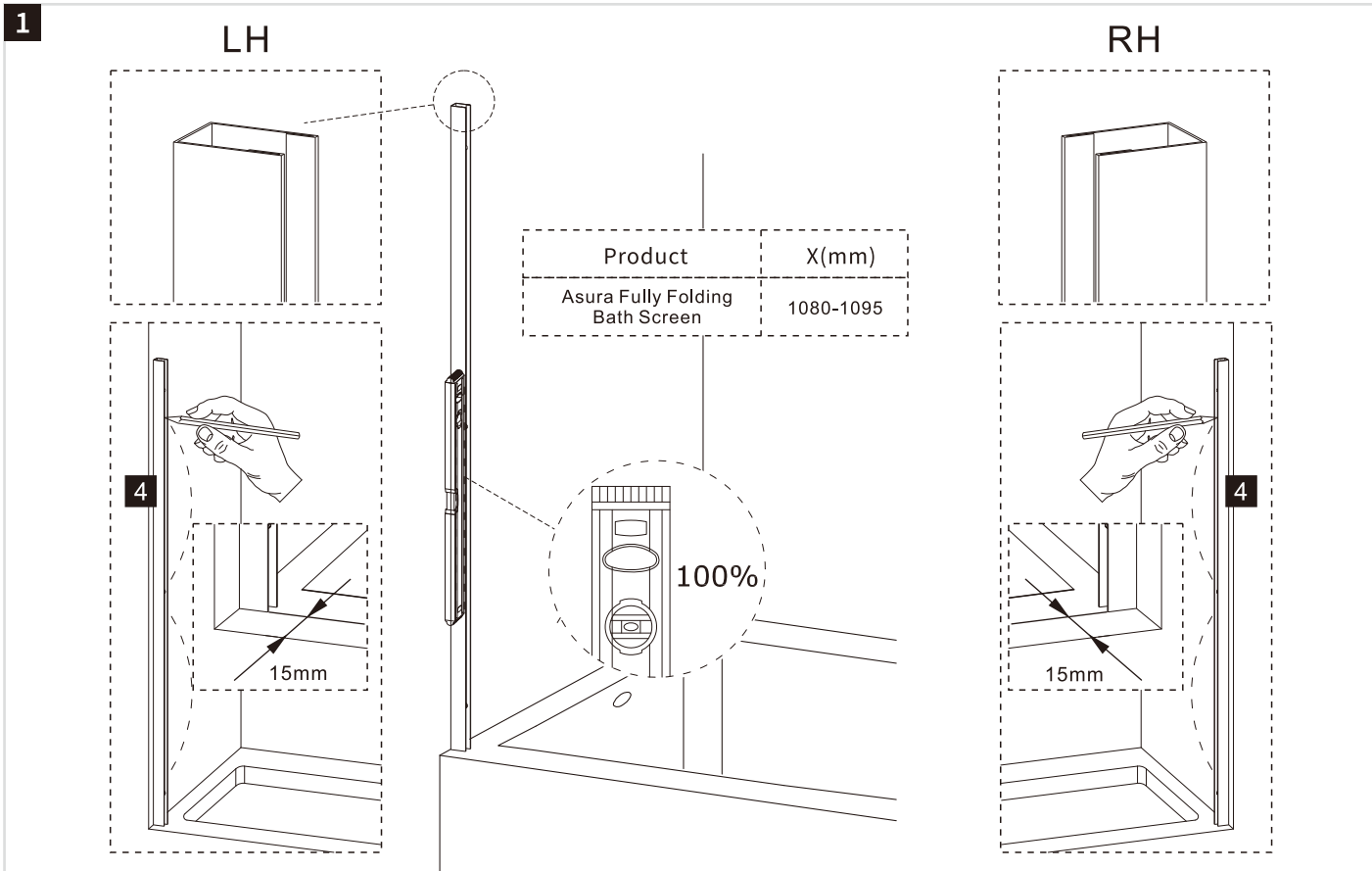
Measuring Tape





<b>1</b>	Wall Profile Cap		x1
<b>2</b>	Wall Plug		x3
<b>3</b>	Screw ST4*50		x3
<b>4</b>	Wall Profile		x1
<b>5</b>	Moving Panel With Profile		x1
<b>6</b>	Screw Cover		x3
<b>7</b>	Screw Gasket		x3
<b>8</b>	Screw ST4*16		x3
<b>9</b>	Vertical Seal		x1
<b>10</b>	Bottom Seal A L=527mm		x1
<b>11</b>	Bottom Seal B L=513mm		x1
<b>12</b>	Hinge		x2
<b>13</b>	Hinge Cover		x8
<b>14</b>	Moving Panel W/O Profile		x1
<b>15</b>	Allen Key 4mm		x1
<b>16</b>	Tool		x2

## INSTALLATION

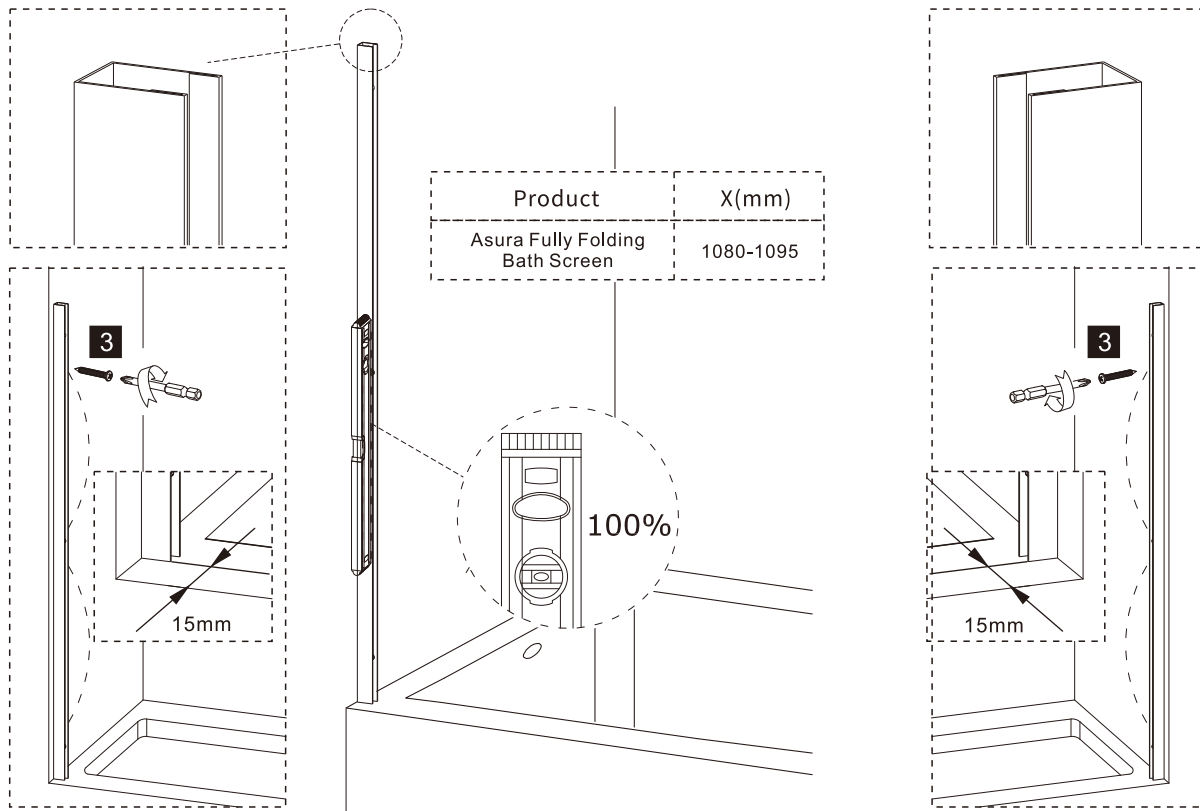


## INSTALLATION

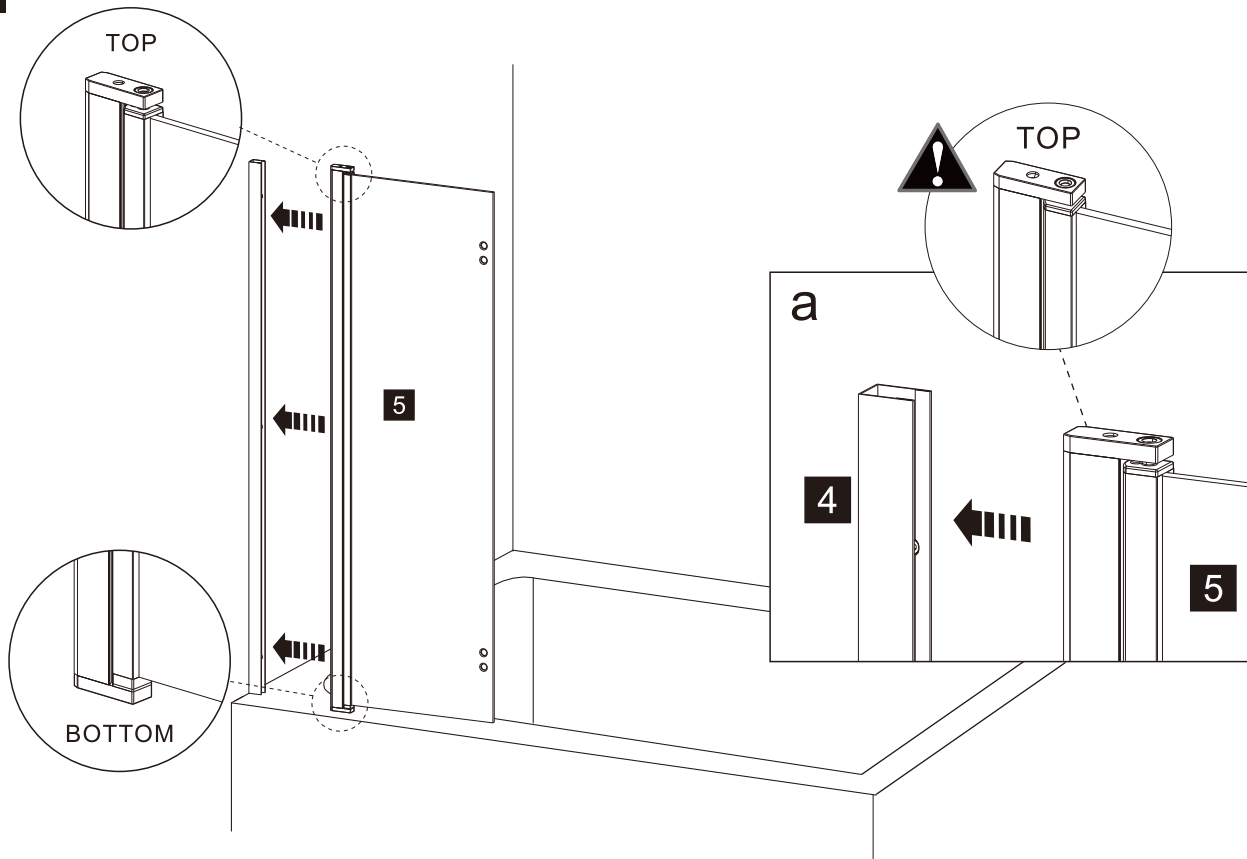
3

LH

RH

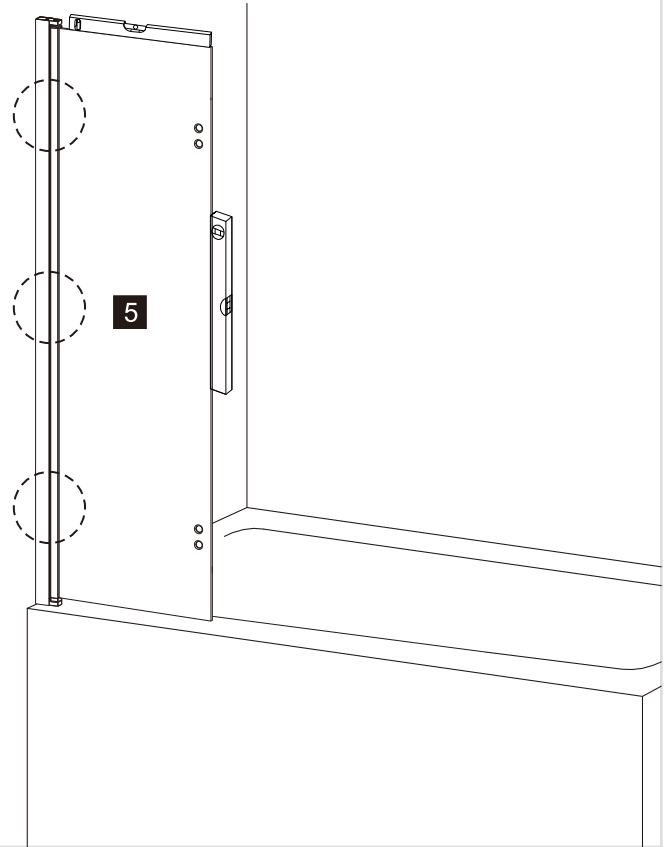
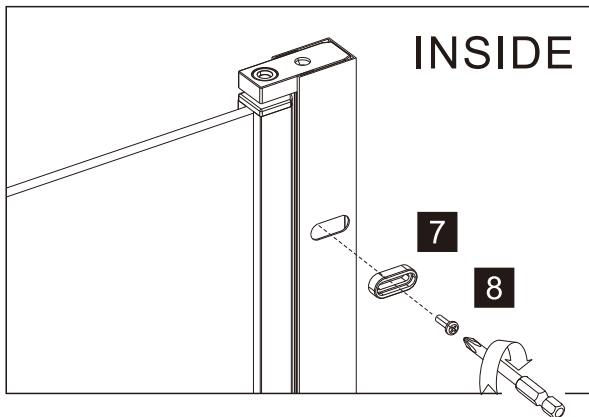


4

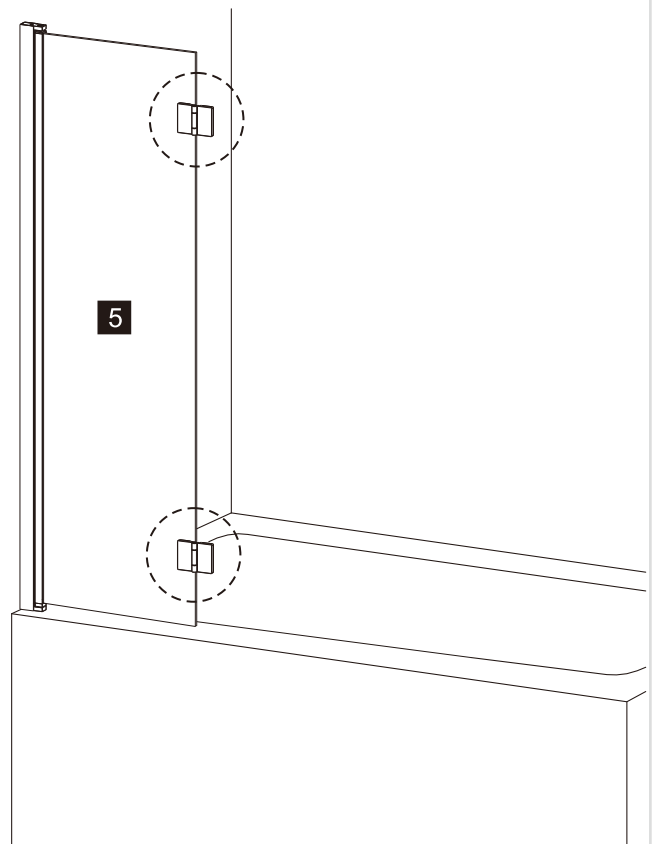
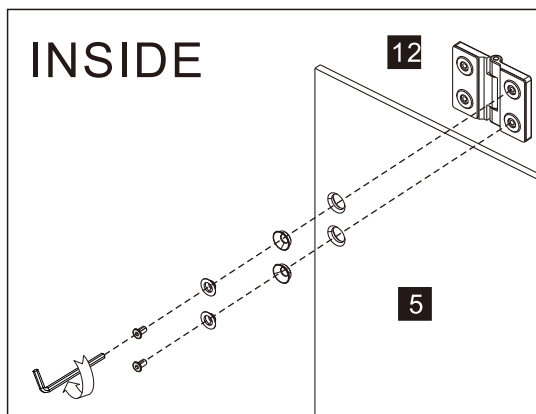


## INSTALLATION

5

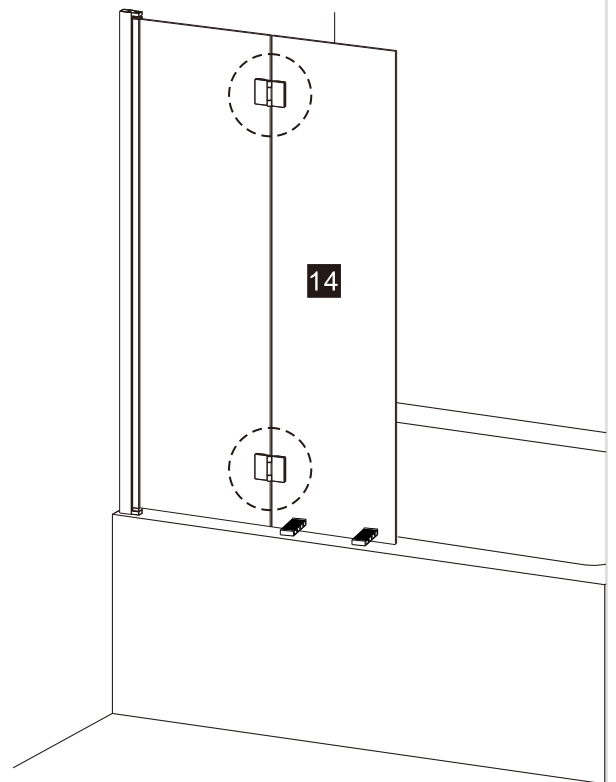
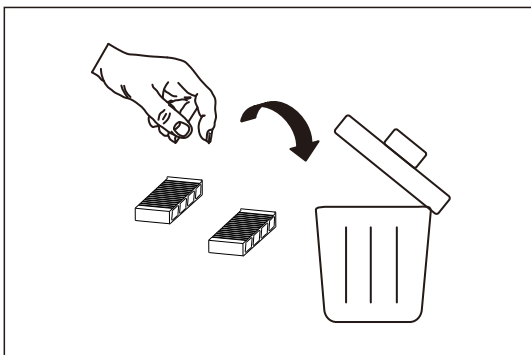
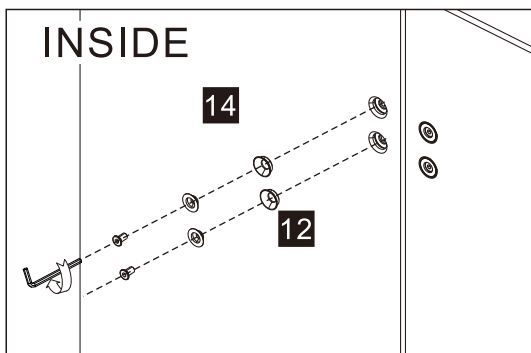
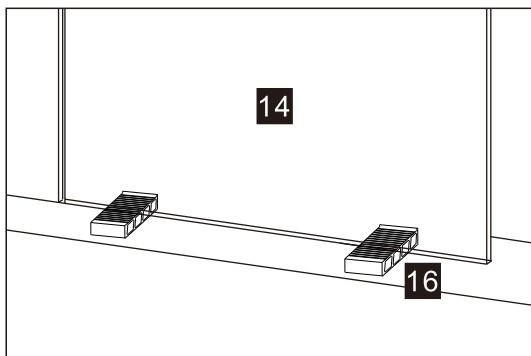


6



## INSTALLATION

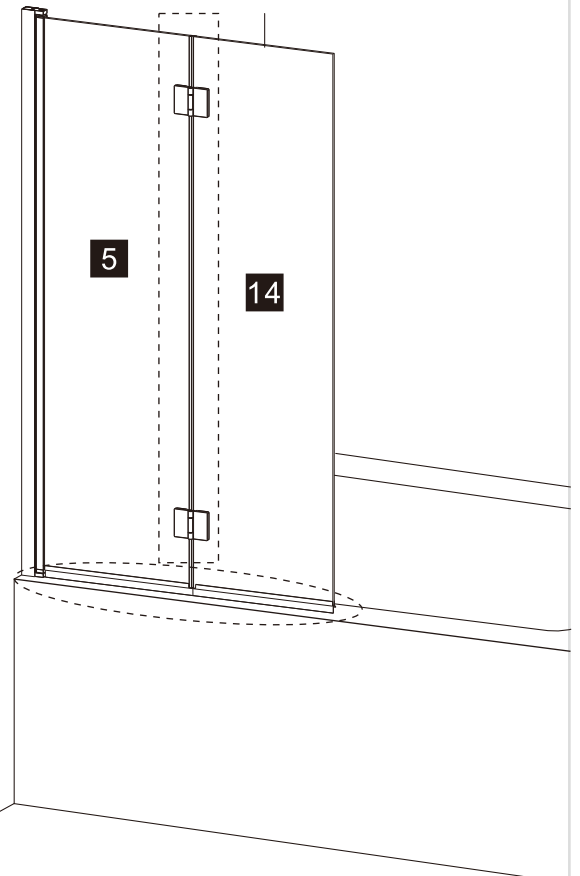
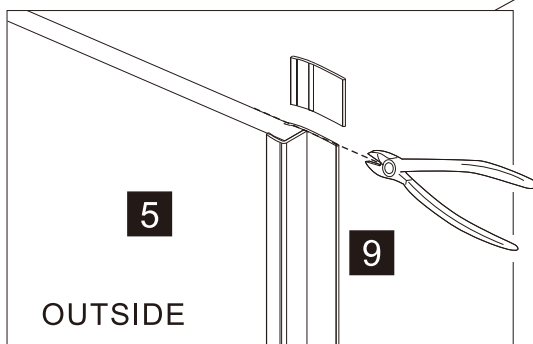
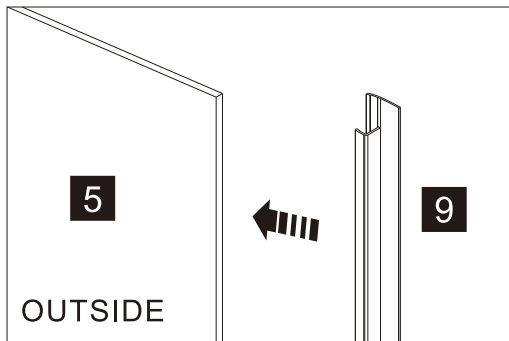
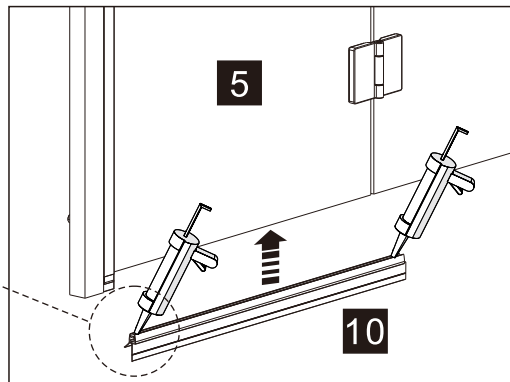
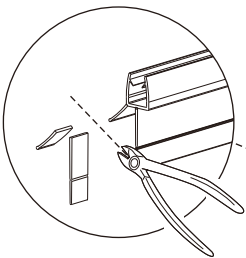
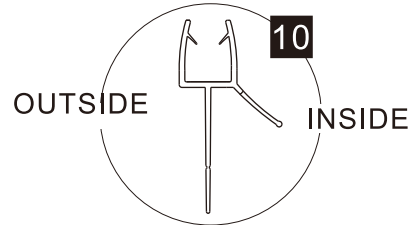
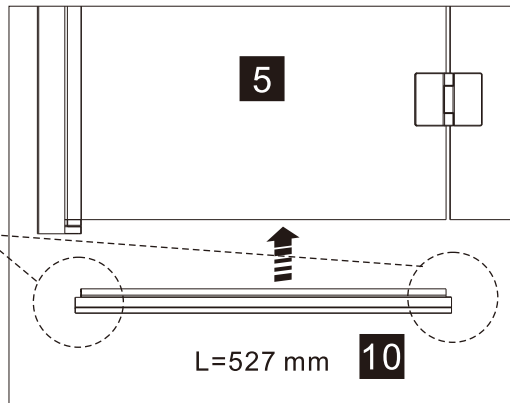
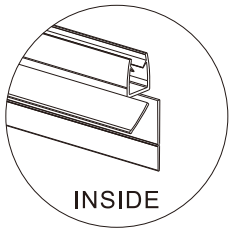
7





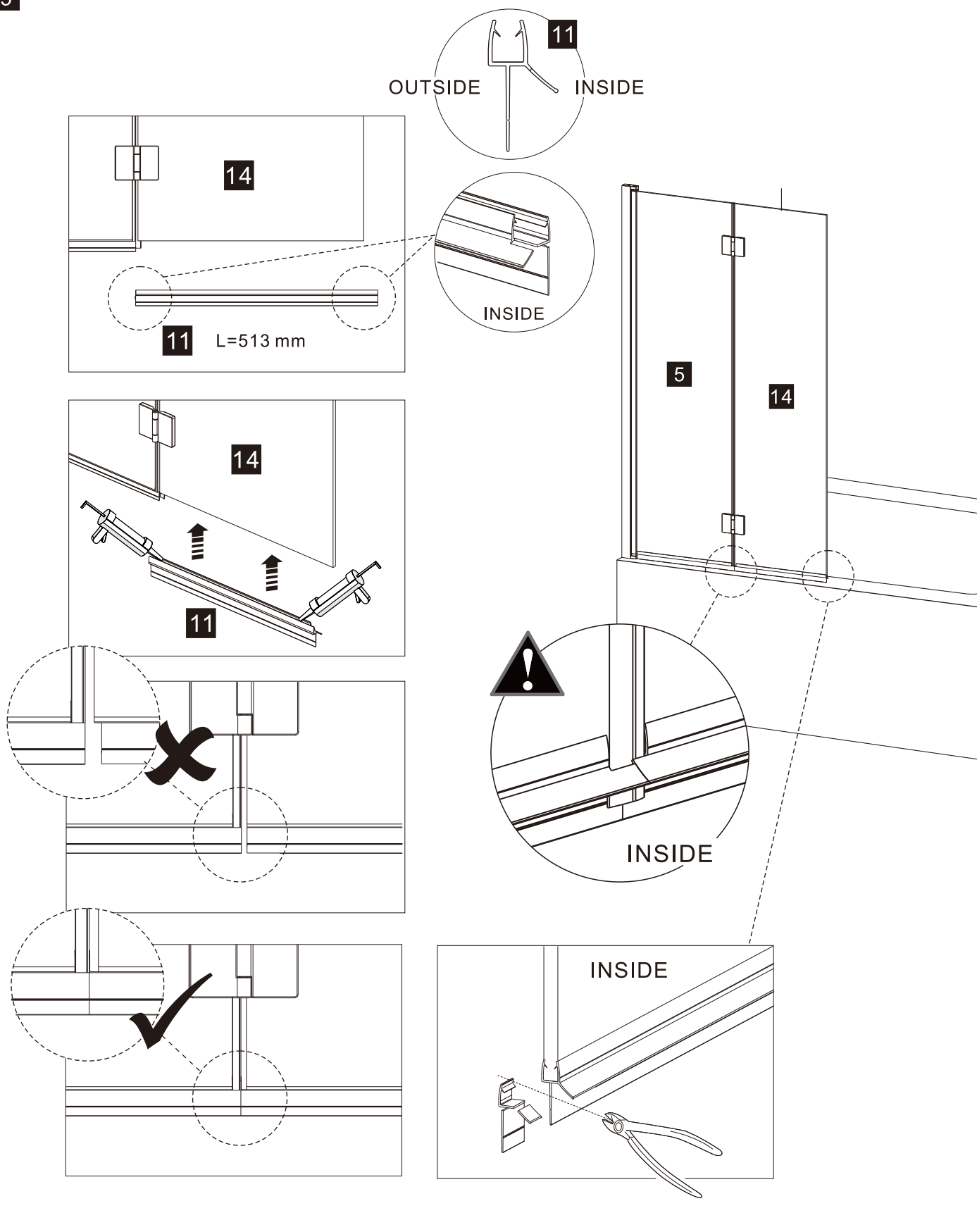
## INSTALLATION

8



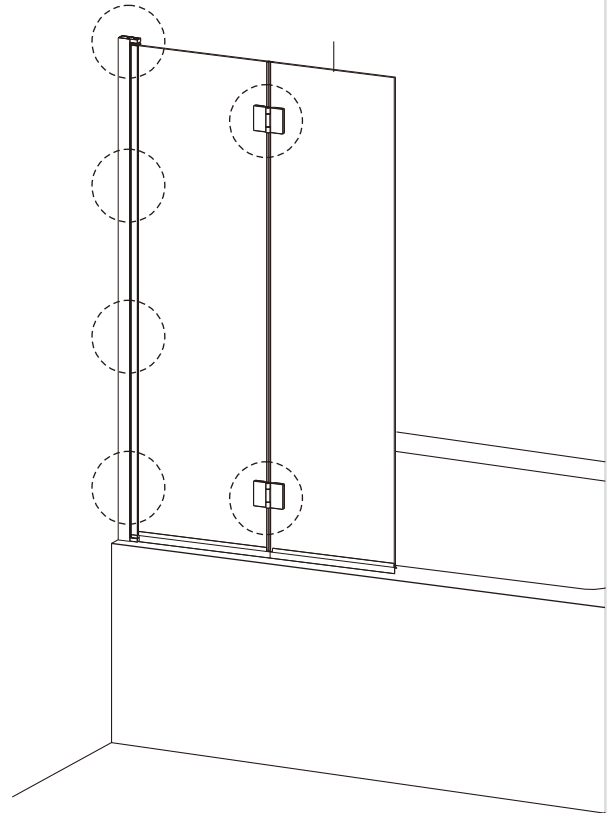
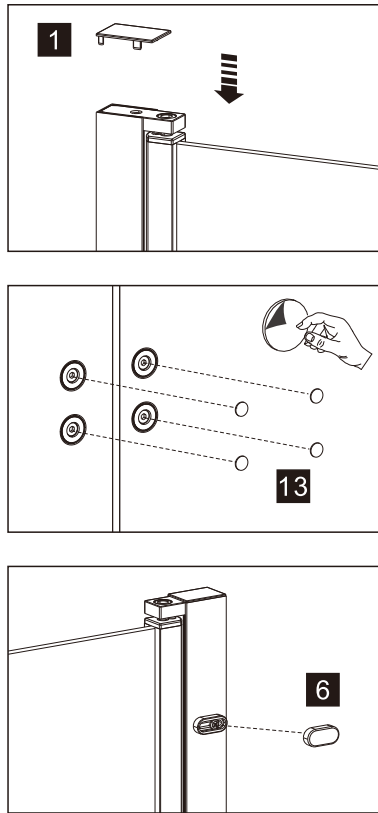
## INSTALLATION

9



## INSTALLATION

10



11

