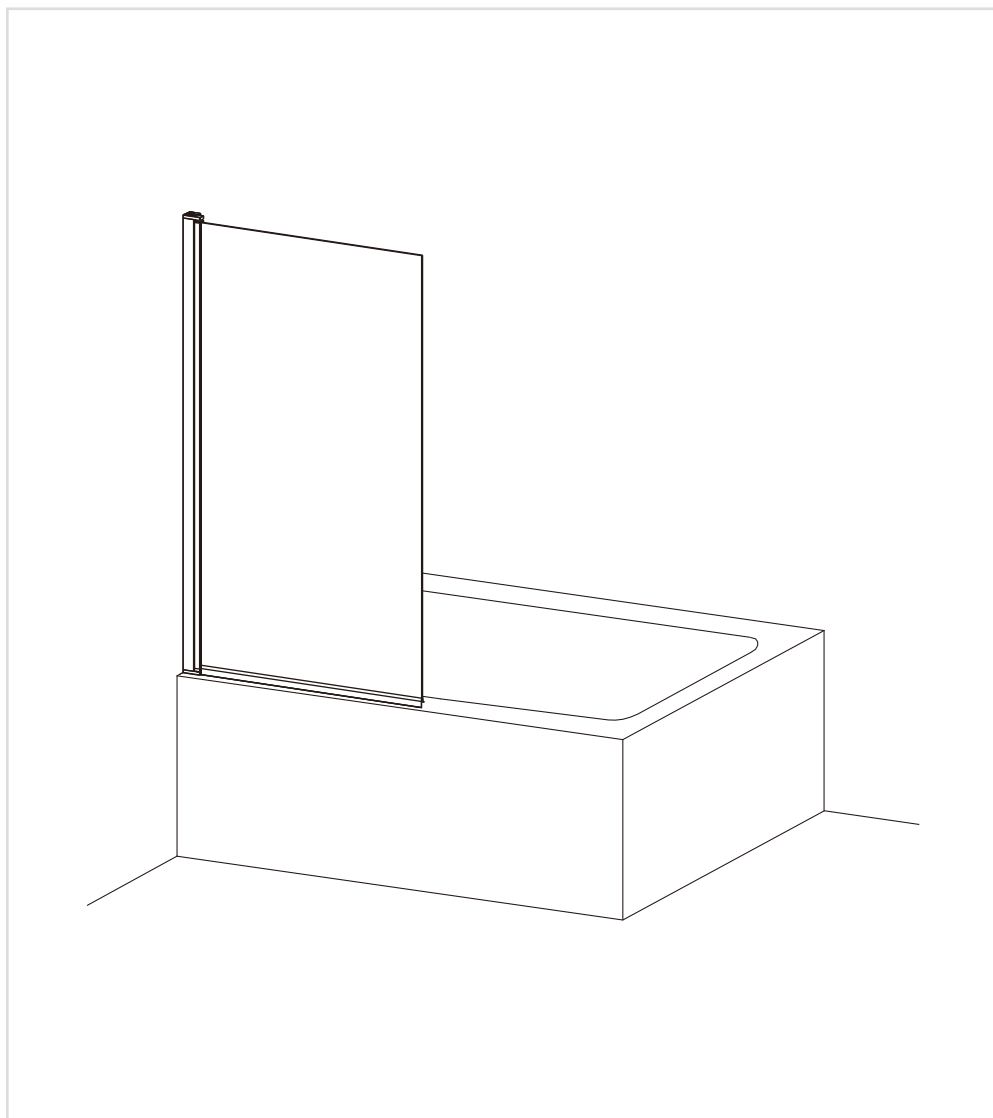


Hinged Bath Screen



PRODUCT CODES:

CABSSC0800_V2
CABSBC0800_V2
CABSFC0800
CABSVC0800
CABSBC0800
CABSTC0800
HXBSSC0800
HXBBC0800
HXBFC0800

1. Pre-Installation Checklist

✓ Before You Begin:

- Ensure all tiling/grouting is complete.
- Bathtub **must be level and sealed** to tiles.
- Verify door dimensions match your space (see Section 3).
- Check for hidden pipes/cables before drilling.

⚠ Safety Notes:

- **Two people required** for installation (glass is heavy!).
- Wear gloves when handling glass edges.

2. Unpacking & Components

Confirm all parts are present:

- Please refer to all components included on following page titled “COMPONENTS”

Missing/Damaged Parts?

Contact Bathroom Brands immediately: ☎0345 873 8840.

3. Step-by-Step Installation

A. Frame Assembly

1) Mark Drill Points:

- Use a spirit level to mark vertical lines for wall profiles.
- Drill 6mm holes at marked points; insert wall plugs.

2) Attach Wall Profiles:

- Secure profiles with ST4x50mm screws (×4 total).
- Cover ends with profile caps if any.

B. Door Installation

3) Hang the Door:

- Following the instruction to assemble the door, ensure door is fully secured.
- Make necessary adjustment if door doesn't close smoothly.

4) Apply Seals:

- Install necessary seals provided on door and side panel if any.

C. Final Checks

5) Level & Secure:

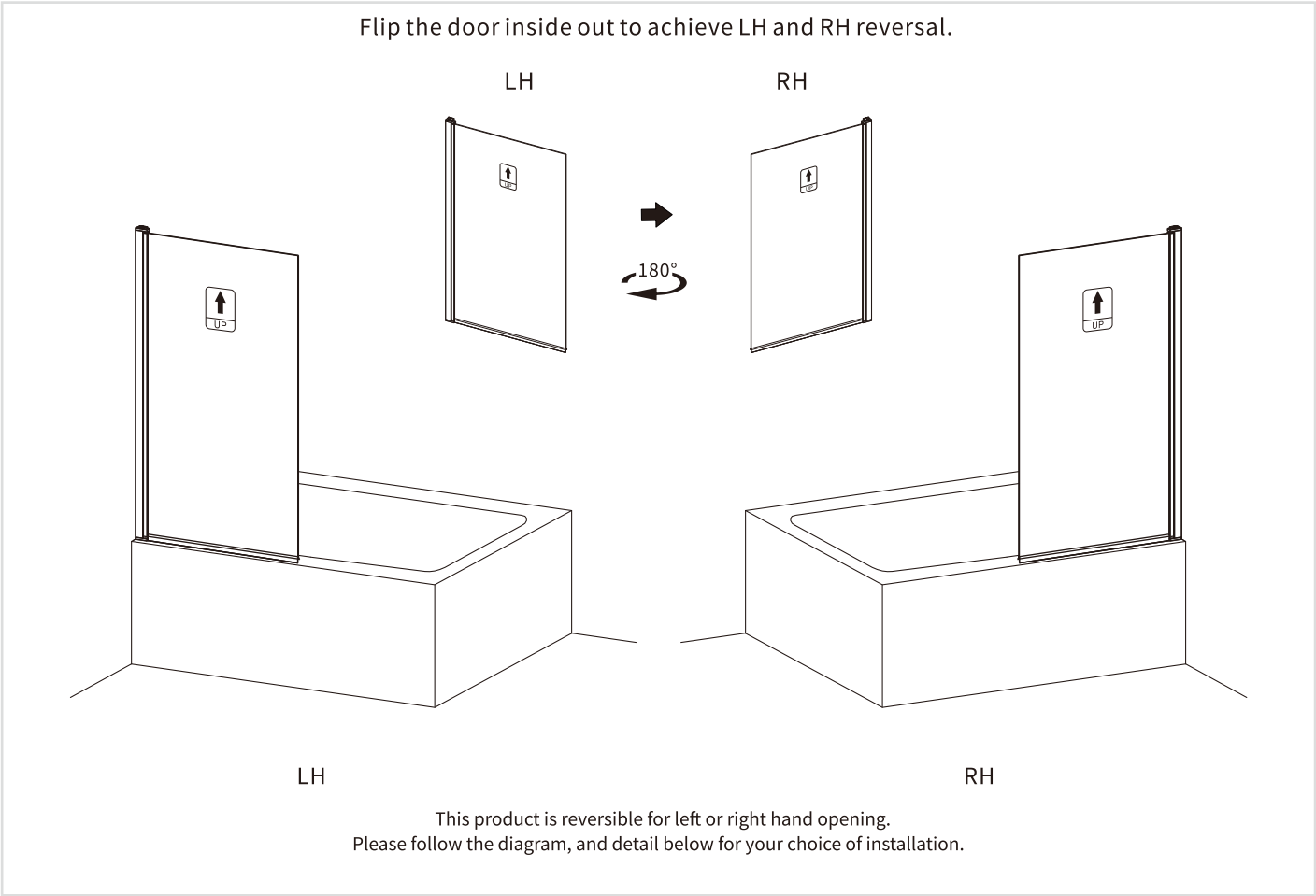
- Confirm door is level; tighten all screws.
- Let silicone cure for 24 hours before use.

4. Care & Maintenance

- **Cleaning:** Use only **pH-neutral soapy water** (pH 6.8–7.2).
- **Avoid:** Abrasives, solvents, or acidic cleaners.

Ensure seals are flush to prevent leaks.

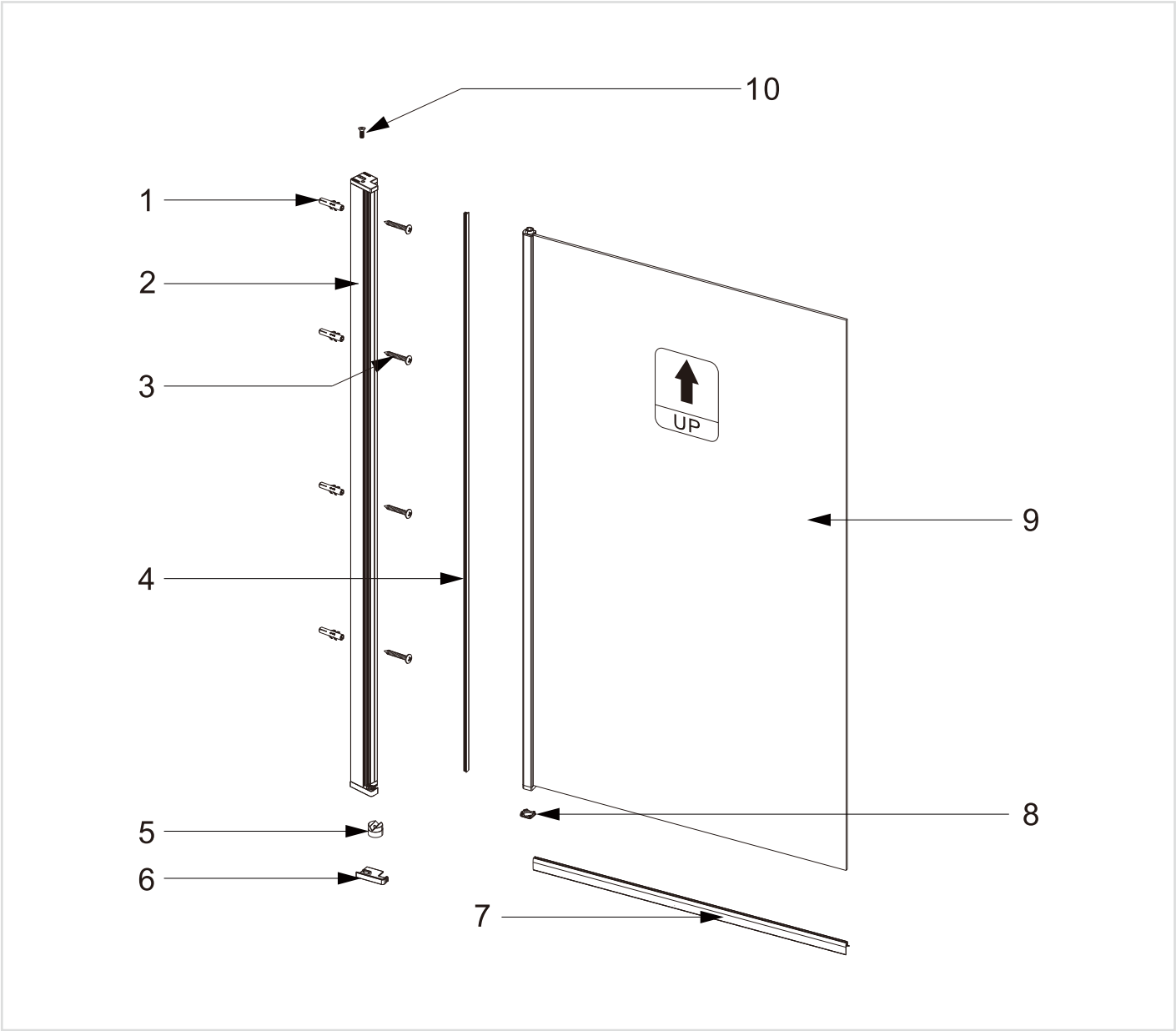
ORIENTATION




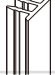









Tools Required (not supplied):

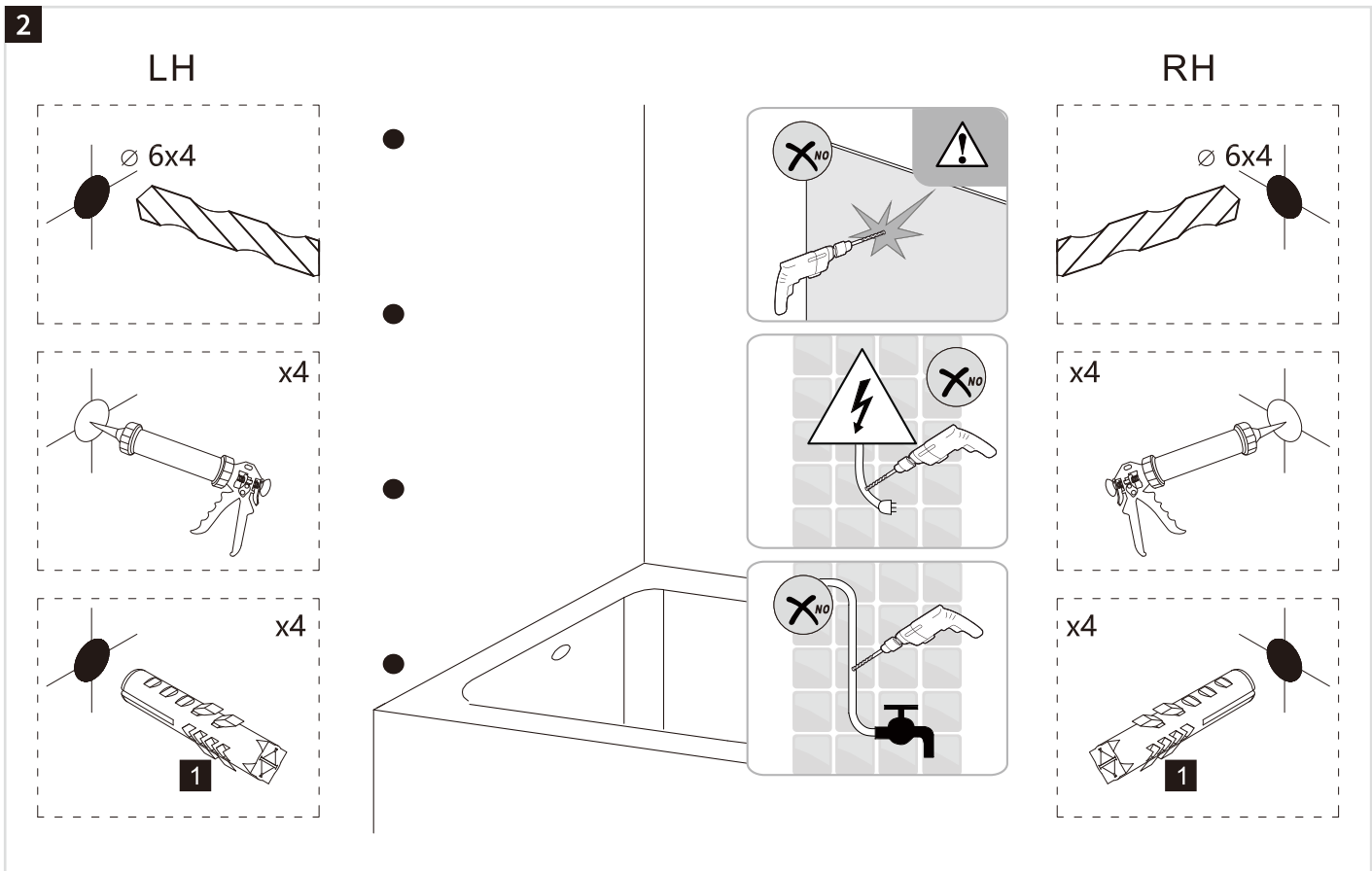
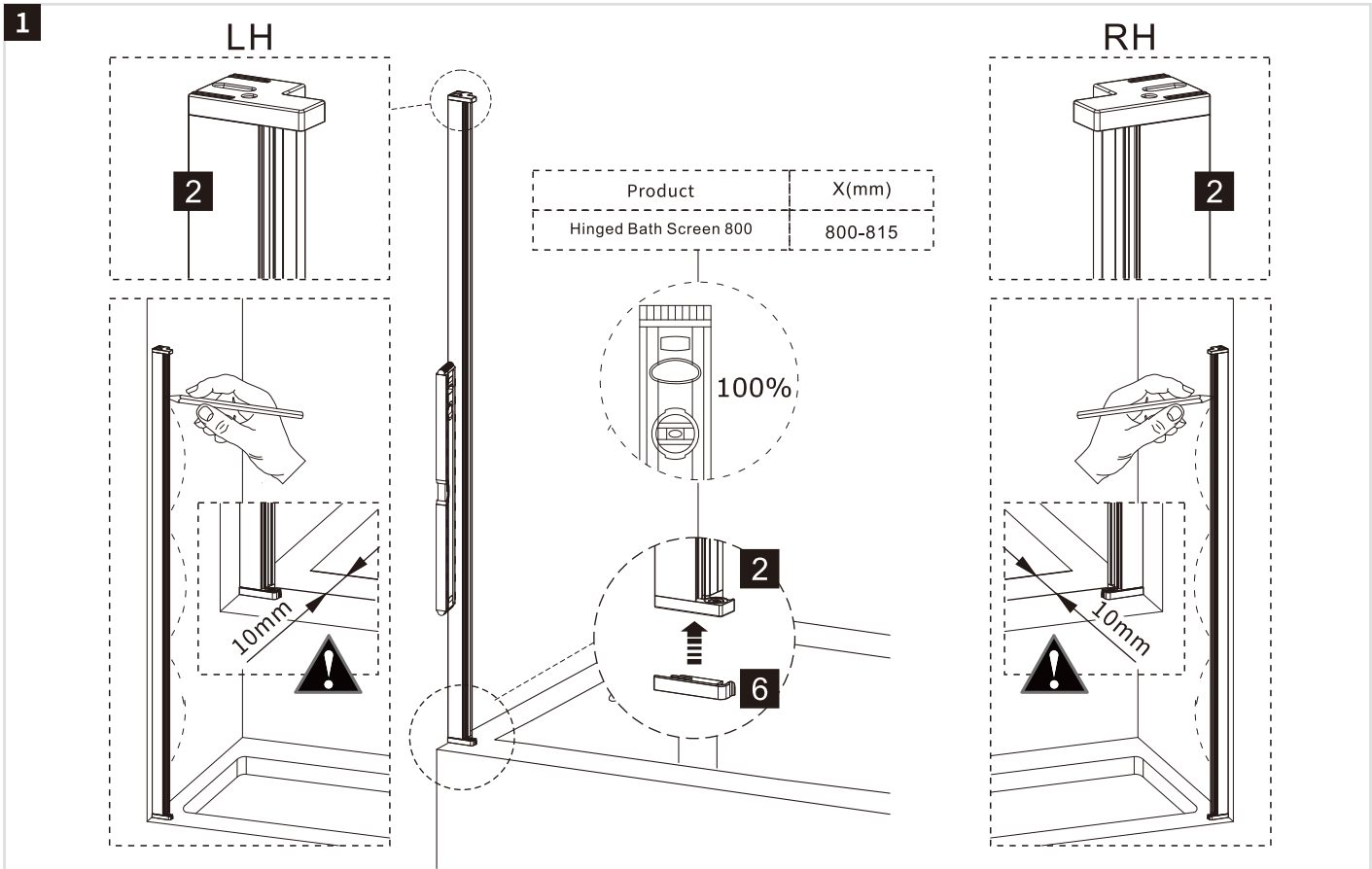
Spirit Level		Torque Screw Driver	
Pencil		Snips	
Drill		6mm Drill Bit	
Silicone		Measuring Tape	
Knife			

COMPONENTS

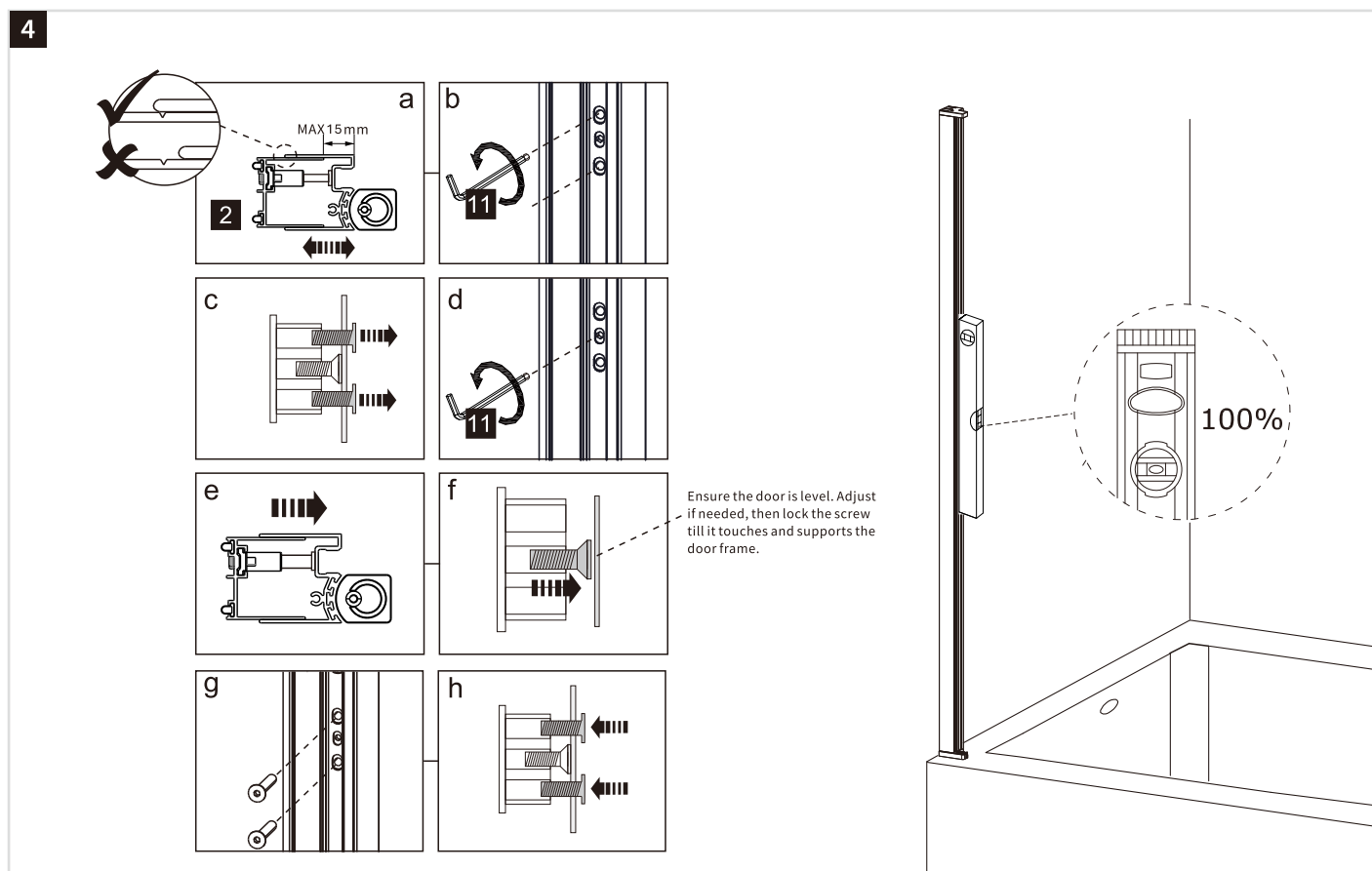
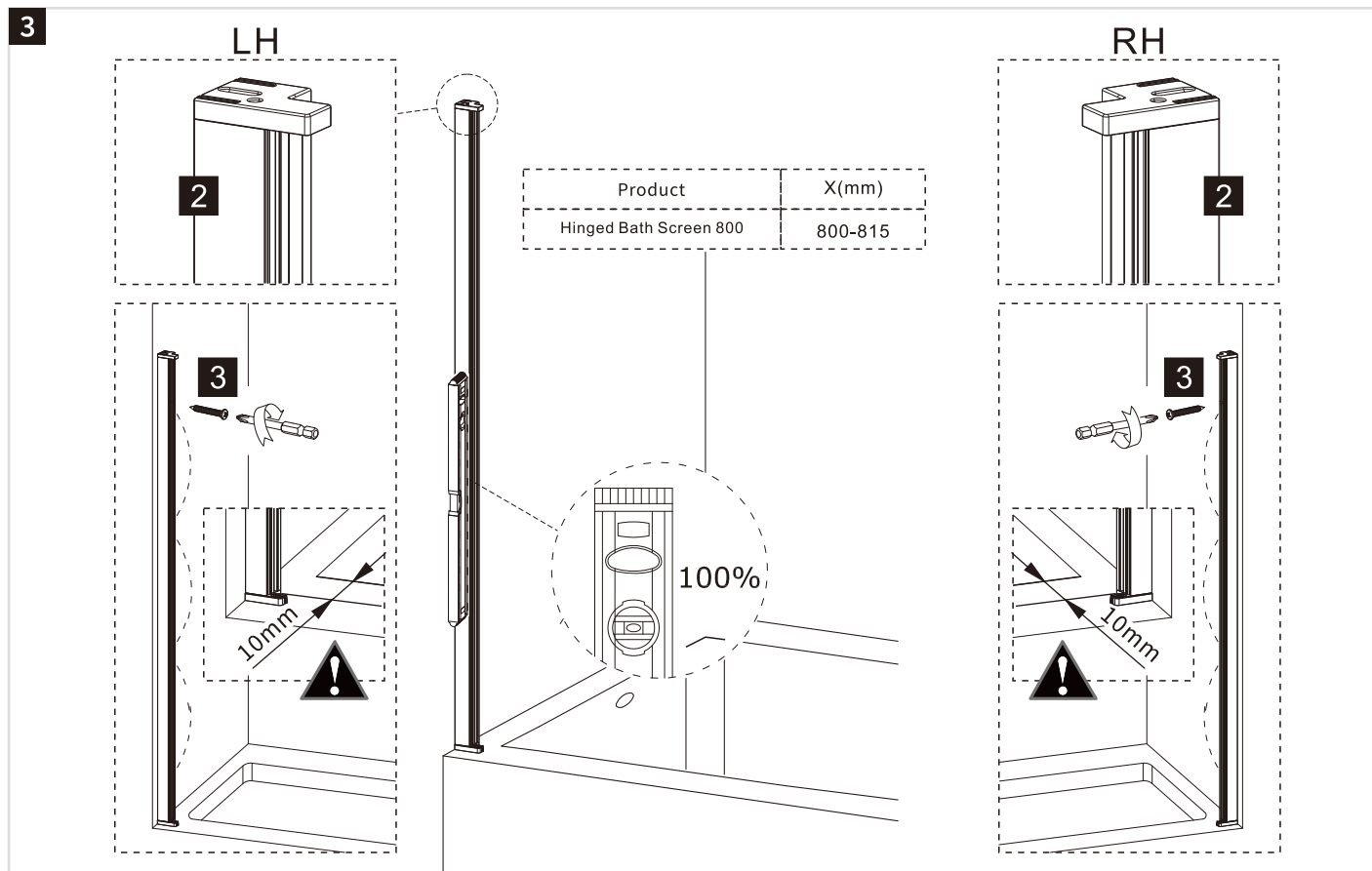


1	Wall Plug		x4
2	Wall Profile		x1
3	Screw ST4*50		x4
4	Wall Profile Cover Strip		x1
5	Pivot core		x1
6	Bottom water proof block	 LH x1 RH x1	
7	Bottom water proof strip		x1
8	Pivot core gasket		x1
9	Moving Panel		x1
10	Screw M4*16		x1
11	Allen Key	 2.5MM 3MM	

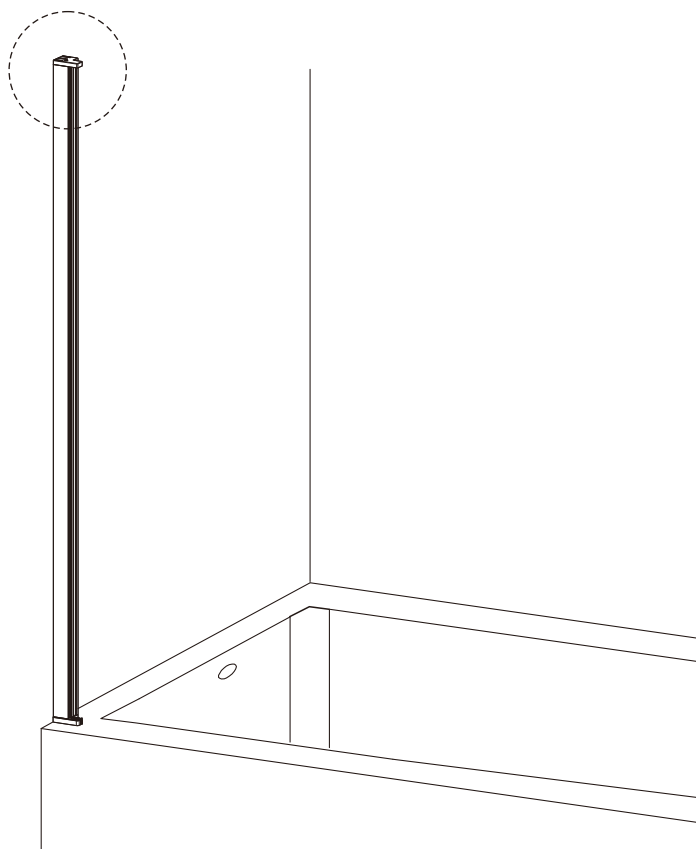
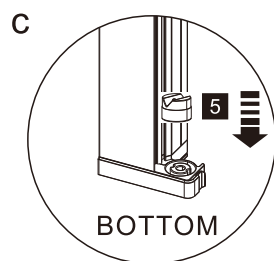
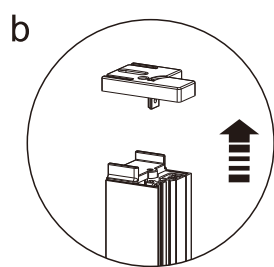
INSTALLATION



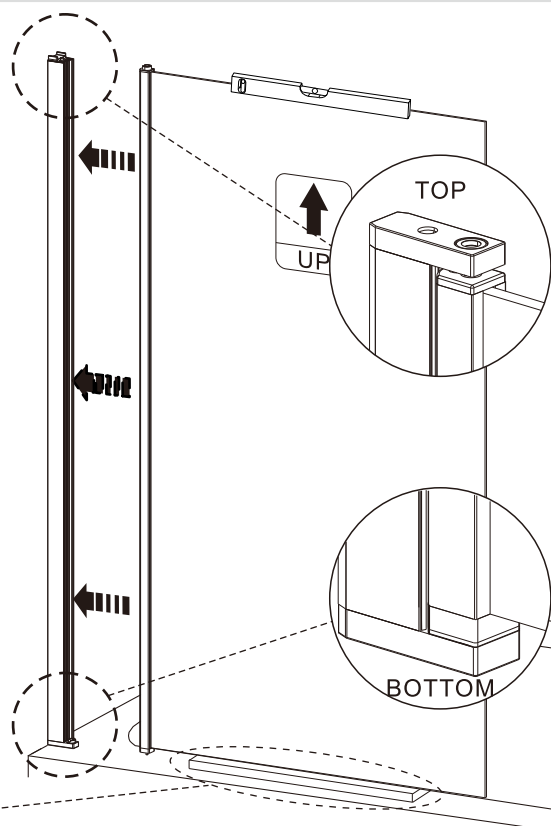
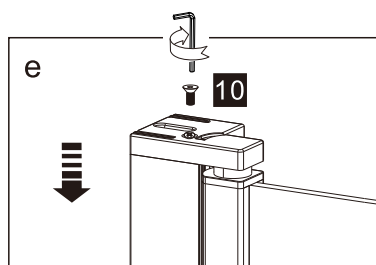
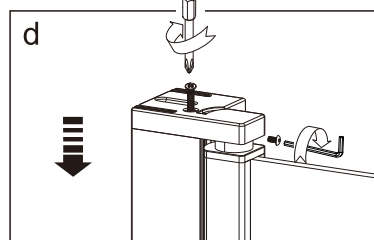
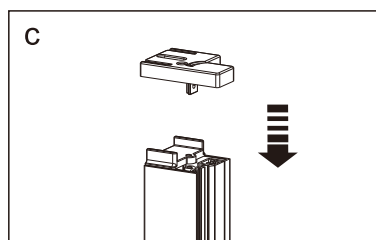
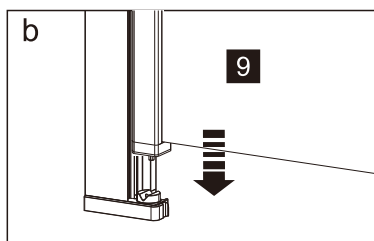
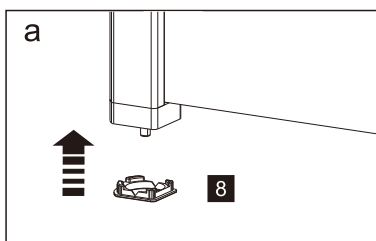
INSTALLATION



5



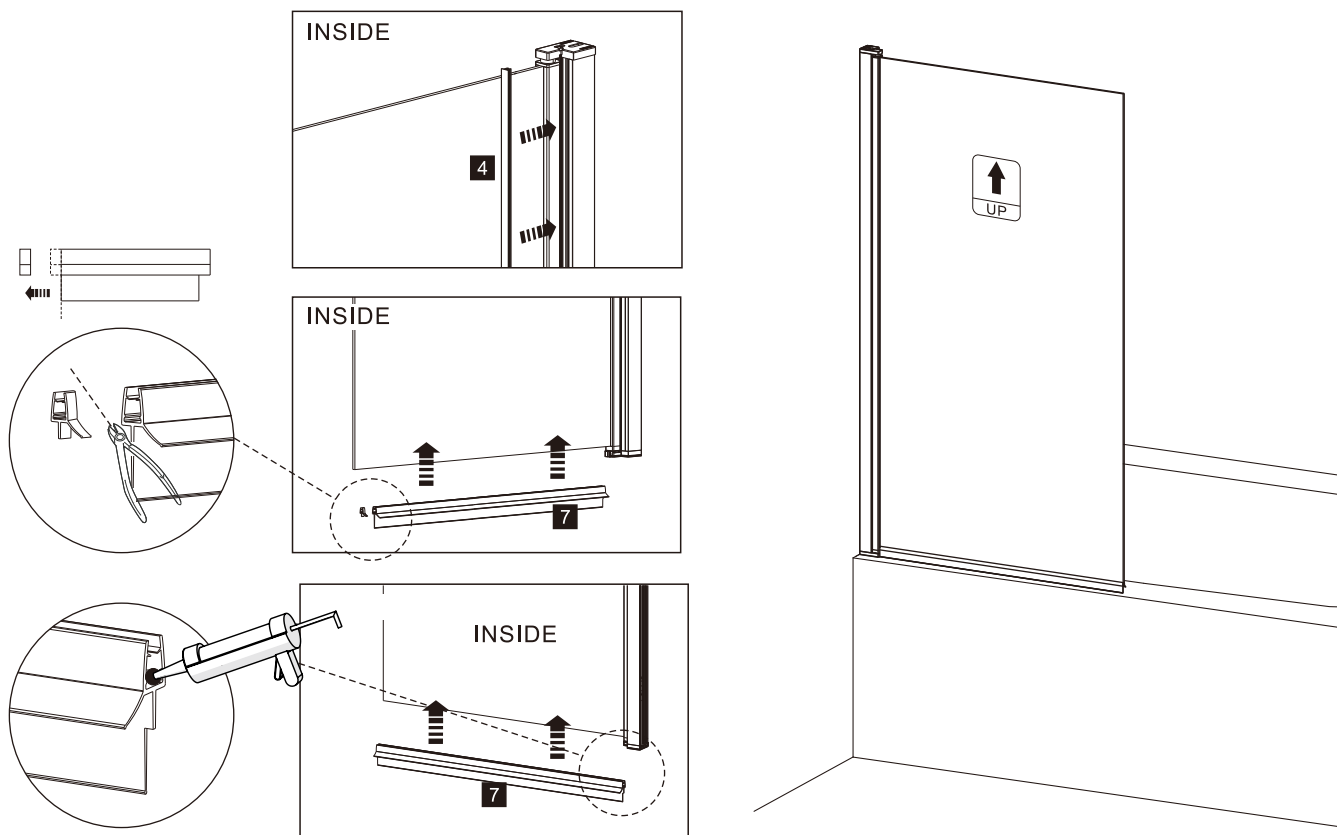
6



If needed, use a 20mm-thick piece of cardboard from the packaging box as a support.

INSTALLATION

7



8

