

CARE & MAINTENANCE

CLEANING THE PRODUCT

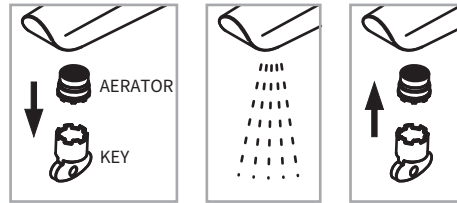
The material we use in our taps is very durable, nevertheless care should be taken when cleaning them. They should be cleaned only with warm soapy water followed by rinsing with clean water and drying with a soft cloth. All finishes are vulnerable to acid attack and some strong substances such as household cleaners, disinfectants, denture cleaners, hair dyes, wine making, and photographic chemicals can cause the surface to go black or peel.

Note: Never use abrasive detergents or disinfectants or those containing alcohol, hydrochloric acid or phosphoric acid.

CLEANING THE AERATOR

Before use: Unscrew the aerator and allow the water to run freely until all debris is removed. Screw the aerator back into the spout once all impurities have been flushed from the water supply.

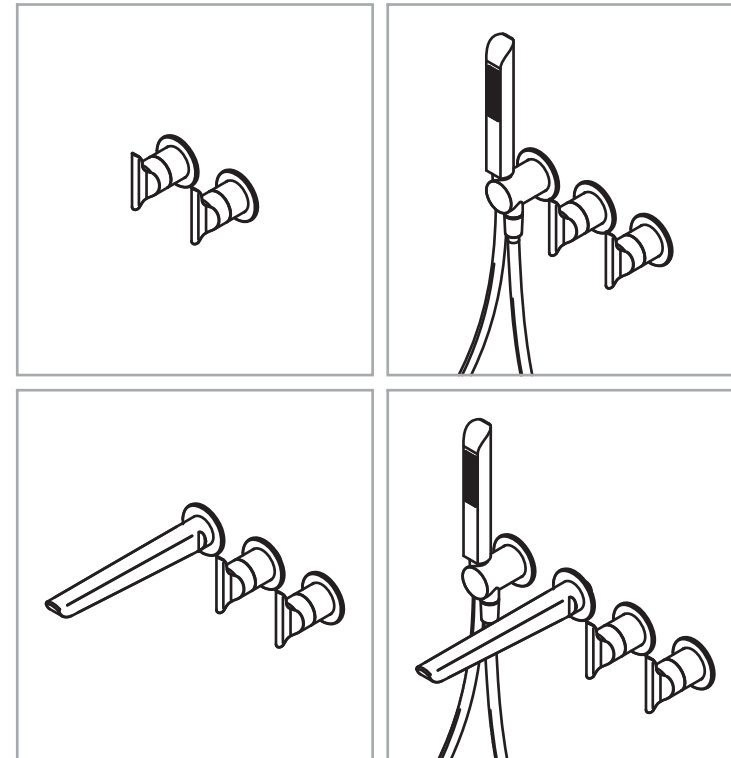
Periodically: Using the key provided in the box, unscrew the aerator from the spout and rinse with clean running water. Once all loose debris and dirt has been cleared, replace the aerator into the spout and tighten with the key provided.



crosswater^x

FOILE

Module



PRODUCT CODES:

FOMODDIVLBPC/F/M
FOMOD1601TRIMC/F/M
FOMOD1701TRIMC/F/M
FOMOD440TRIMC/F/M

The product should only be installed by a suitably qualified plumber/installer



IMPORTANT INFORMATION BEFORE YOU START

Please read carefully and keep this information for further reference.

All products manufactured and supplied by Crosswater are safe provided they are installed, used correctly and receive regular maintenance in accordance with these instructions. If you are in any doubt about your ability to install this product safely you must employ the services of an experienced qualified plumber.

These fittings need to be installed in accordance with, and meet the requirements of the Water Supply (Water Fittings) Regulations 1999 and Scottish Byelaws 2004.

Operating pressure range: Minimum 0.2 bar, Maximum 5.0 bar. Maximum static pressure: 10.0 bar.

Note: Nominally equal (balanced) inlet supply pressures are recommended for optimum performance with mixer taps designed to comply with BS EN 200 for single taps /

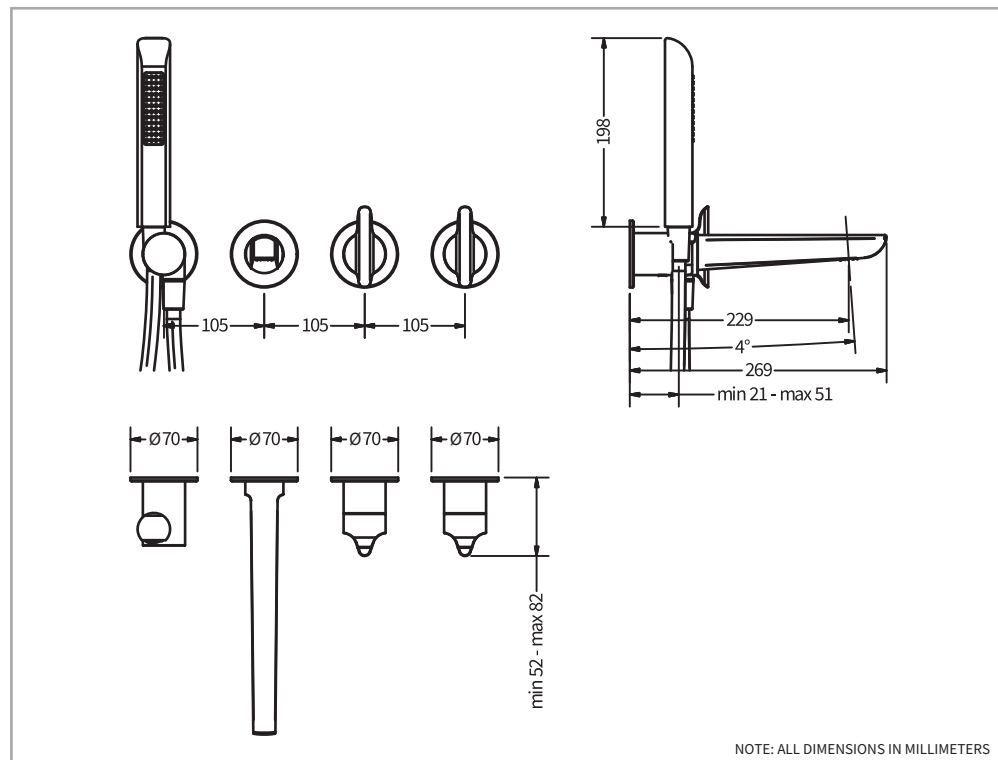
combination taps and BS EN 817 for single lever mixer, for water systems of type 1 and 2 general technical specifications and to be used within systems designed to BS 6700.

BS 6700 recommends the temperature of stored water should never exceed 65°C.

A stored water temperature of 60°C is considered sufficient to meet all normal requirements and will minimise the build up of lime scale in hard water areas.

If the fitting is installed at low pressure (tank fed), then the minimum distance from the highest installed position of the outlet to the underside of the cold tank should be at least 2 metres to ensure adequate performance.

DIMENSIONS



i

IMPORTANT INFORMATION

Please read carefully and keep this information for further reference.

These taps and mixers should be installed in compliance with the Water Regulations. Where the supplies are unbalanced, i.e. Hot water from cylinder tank / cold from the mains, approved check valves must be fitted in the supply pipes. For further details contact your Local Water Authority.

BEFORE YOU START

Important Pre-Installation Notes

Remove all packaging and check the fitting for damage before starting installation.

Warning: Before starting any installation please consider the following: before drilling into walls, check that there are no hidden electrical wires, cables or water supply pipes. This can be checked with the aid of an electronic detector.

If power tools are used do not forget to:
Wear eye protection
Unplug equipment after use

Important: Remember to turn off the mains water supply before connecting to any existing pipe work. Fitting isolating valves to the inlet feeds is recommended for ease of maintenance.

Warning: Before installing the new fitting it is essential that you thoroughly flush through the pipework in order to remove any remaining swarf, solder, etc. Failure to carry out this procedure could cause problems or damage to the workings of the fitting.

Take care when handling the 'flexible connecting pipes', do not bend, twist or crush them. Only tighten the pipes by hand. Do not crush or kink the shower hose, this could damage the hose and cause leaks.

TECHNICAL FEATURES

Pressure Range: Min/Max 0,5/5,0 bar
(In case of water pressure higher than 5 bar we recommend installing pressure reducers).
Recommended pressure: 3 bar

Operation:
Either with gas or electric accumulation boilers.
Centralised systems

Safety Lock at: 41°C
Min. working temperature: 3°C
Min. recommended: 15°C
Max. working temperature: 70°C
Max. recommended: 65°C
Recommended thermal differential: 50°C
Thermal disinfection is allowed.

Safety system with flow stop in case of lack of one or two waters.

WARNING: Contact the plumber for the choice of the best water heating device.

TECHNICAL INFORMATION

Module 2 Control Diverter 2-Way



Pressure bar	Flow Rate l/min		
	Exit 1 - Bath Spout	Exit 2 - Handshower	Exit 1 + 2
0,5	9,2	9,2	9,7
1	13	13	13,7
2	18,7	18,7	19,7
3	23	23	24,2
4	26,5	26,5	28
5	29,5	29,5	31,4

Module 2 Control Diverter 3-Way



Pressure bar	Flow Rate l/min		
	Exit 2	Exit 1	Exit 3
0,5	10	10	9,7
1	13,6	13,7	13,4
2	19,2	19,5	19
3	23,4	23,8	23,3
4	27	27,5	26,8
5	30	30,5	29,8

Module 2 Control 2-Way Trimset with Handshower



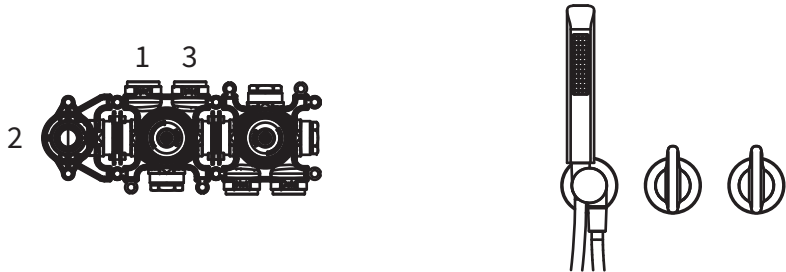
Pressure bar	Flow Rate l/min		
	Exit 1	Exit 2 - Handshower	Exit 1 + 2
0,5	9,2	4,2	9,3
1	13	6	13,4
2	18,7	8,5	19
3	23	10,7	23,5
4	26,5	12,3	27
5	29,5	13,8	30,3

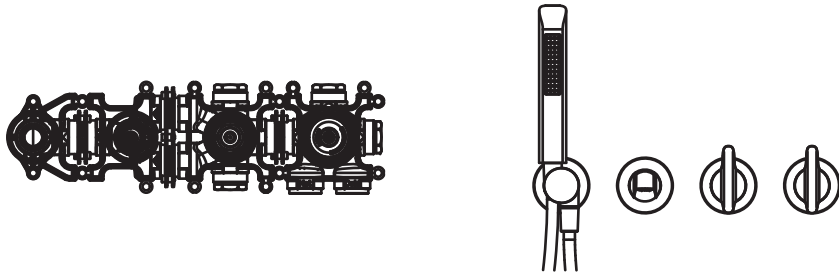
Module 2 Control 2-Way Trimset with Bath Spout & Handshower




Pressure bar	Flow Rate l/min		
	Exit 1 - Bath Spout	Exit 2 - Handshower	Exit 1 + 2
0,5	8	4,1	8,8
1	11,7	6	12,7
2	17	8,5	18,3
3	21	10,6	22,5
4	24	12,3	25,6
5	26,7	13,8	28,5

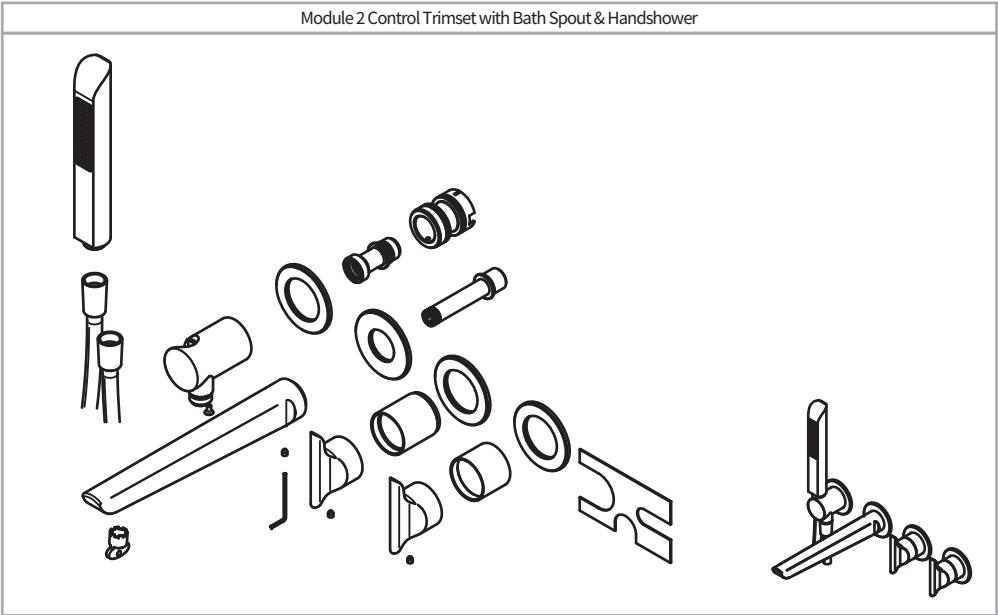
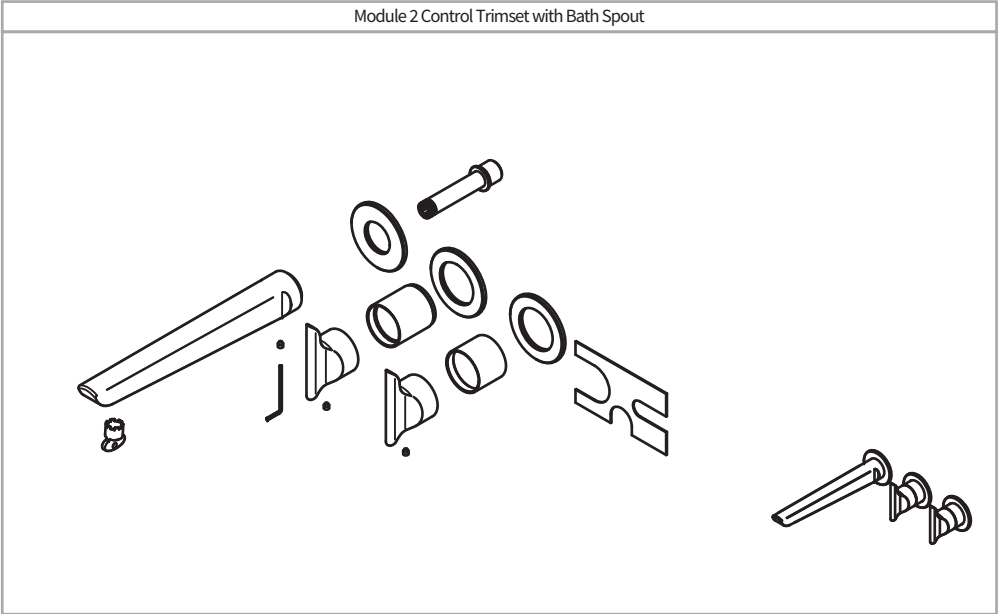
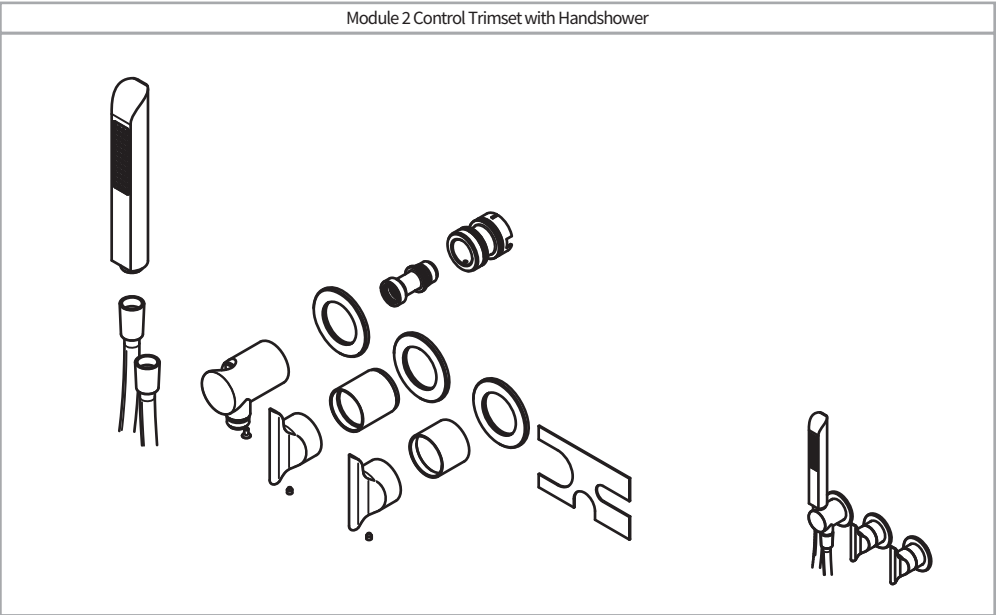
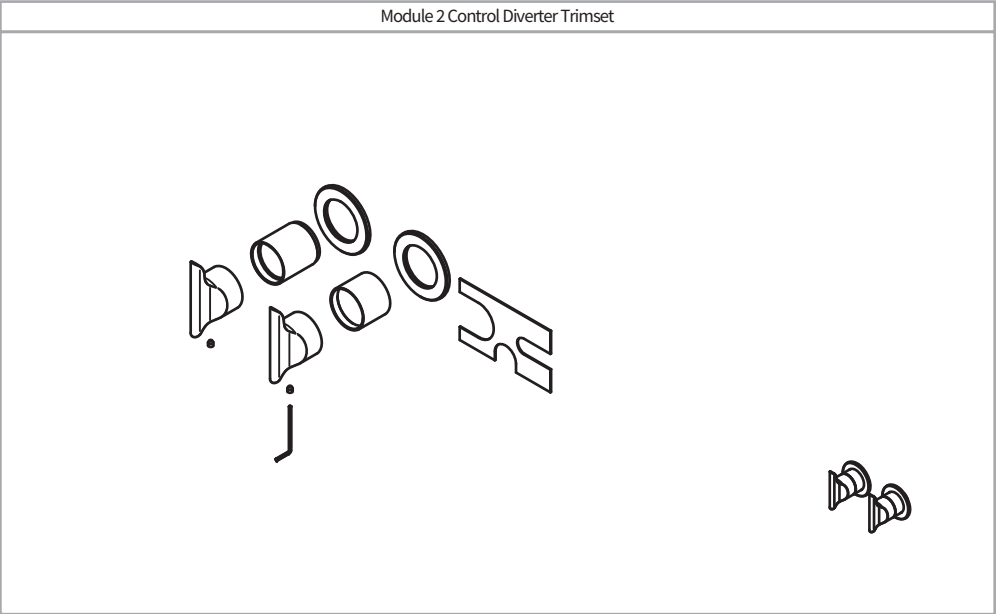
TECHNICAL INFORMATION

Module 2 Control 3-Way Trimset with Handshower			
			
Pressure	Flow Rate l/min		
bar	Exit 2 - Handshower	Exit 1	Exit 3
0,5	4,1	10	9,7
1	6	13,7	13,4
2	8,5	19,5	19
3	10,6	23,8	23,3
4	12,3	27,5	26,8
5	13,8	30,5	29,8

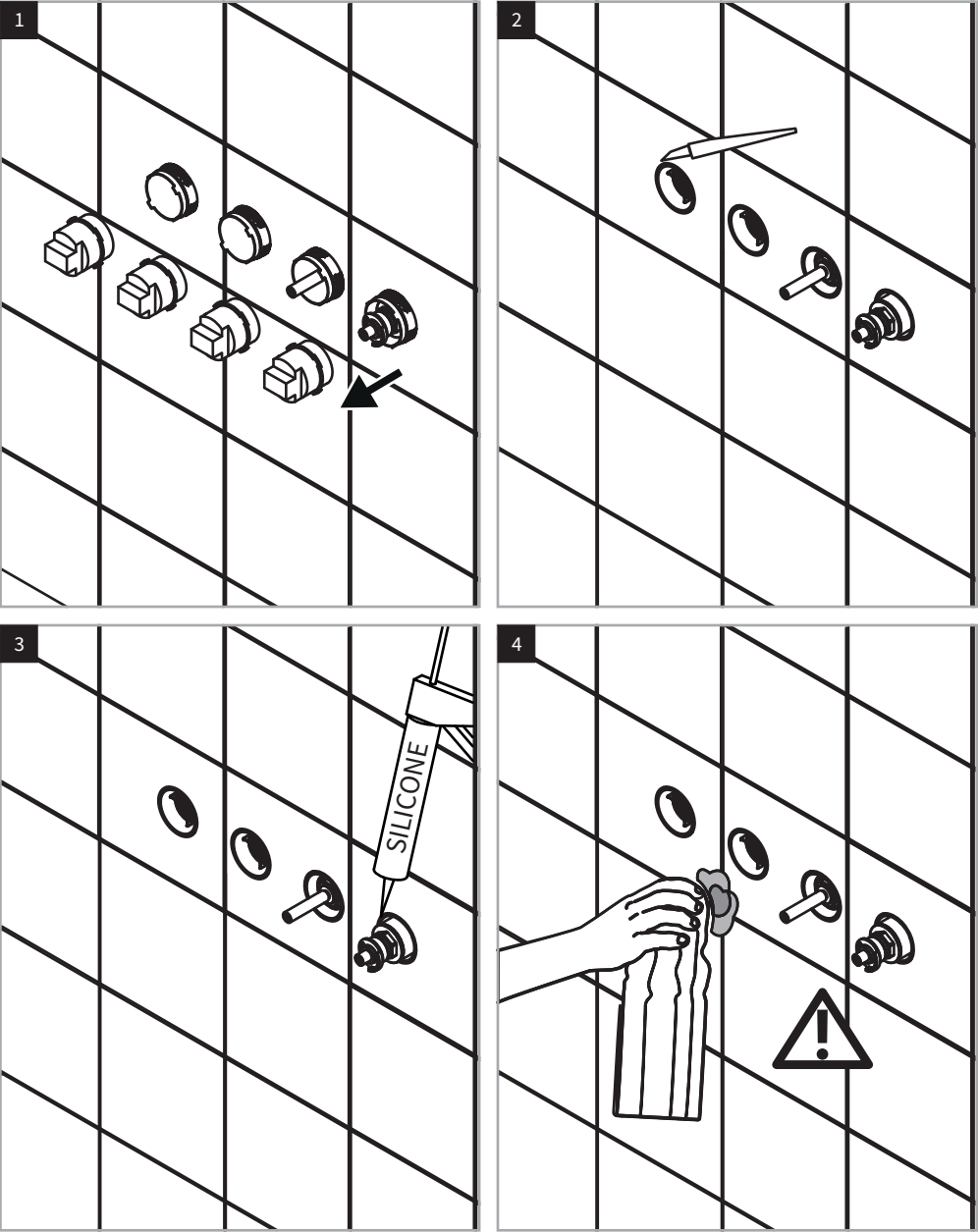
Module 2 Control 2-Way Trimset with Bath Spout & Handshower			
			
Pressure	Flow Rate l/min		
bar	Exit 1 - Bath Spout	Exit 2 - Handshower	Exit 1 + 2
0,5	8	4,1	8,8
1	11,7	6	12,7
2	17	8,5	18,3
3	21	10,6	22,5
4	24	12,3	25,6
5	26,7	13,8	28,5

Module 2 Control 2-Way Trimset with Bath Spout & Handshower			
			
Pressure	Flow Rate l/min		
bar	Exit 2 - Bath Spout	Exit 1	Exit 3
0,5	8,5	10	9,7
1	12,5	13,7	13,4
2	18	19,5	19
3	22,3	23,8	23,3
4	26	27,5	26,8
5	28,8	30,5	29,8

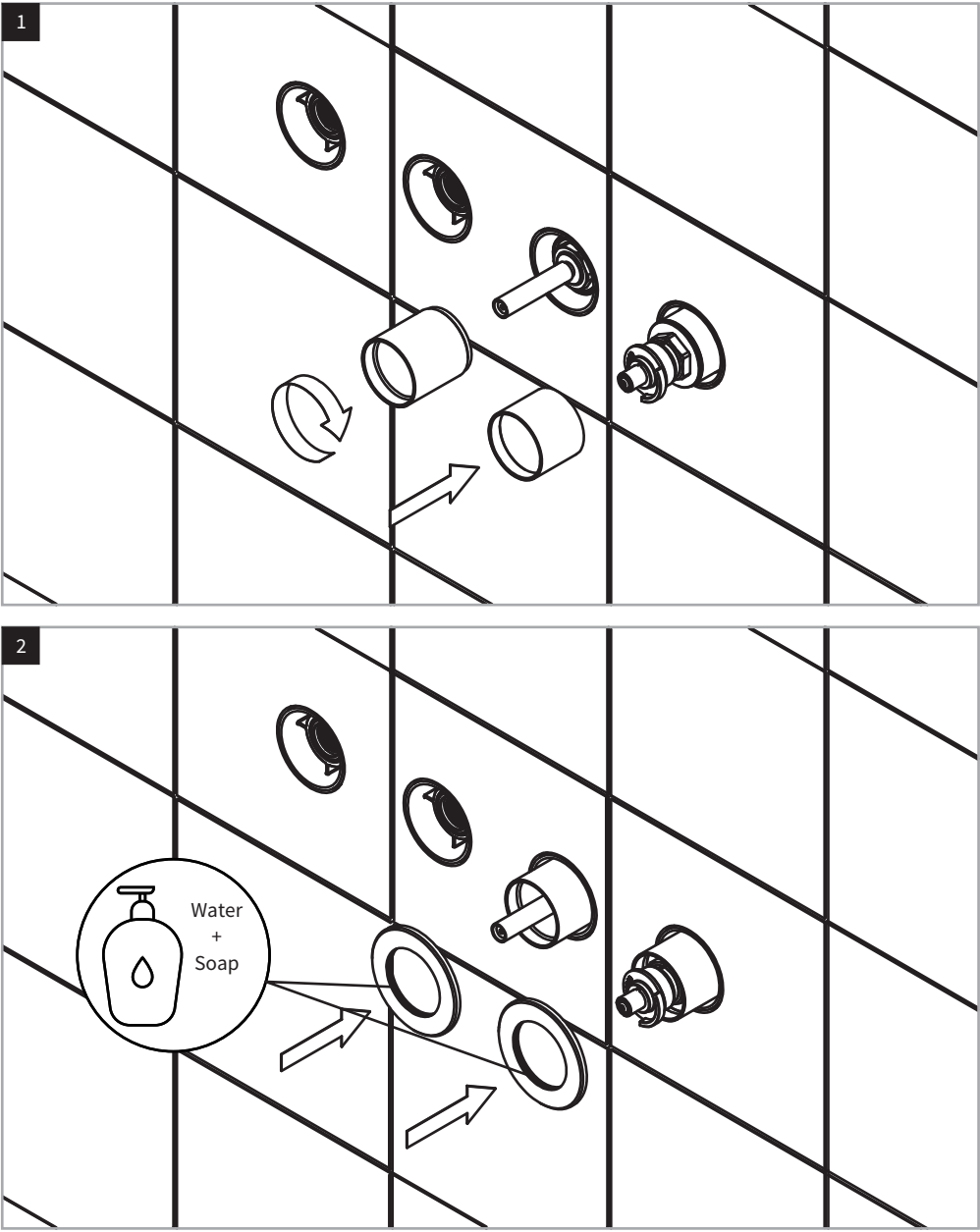
PACKAGE CONTENT

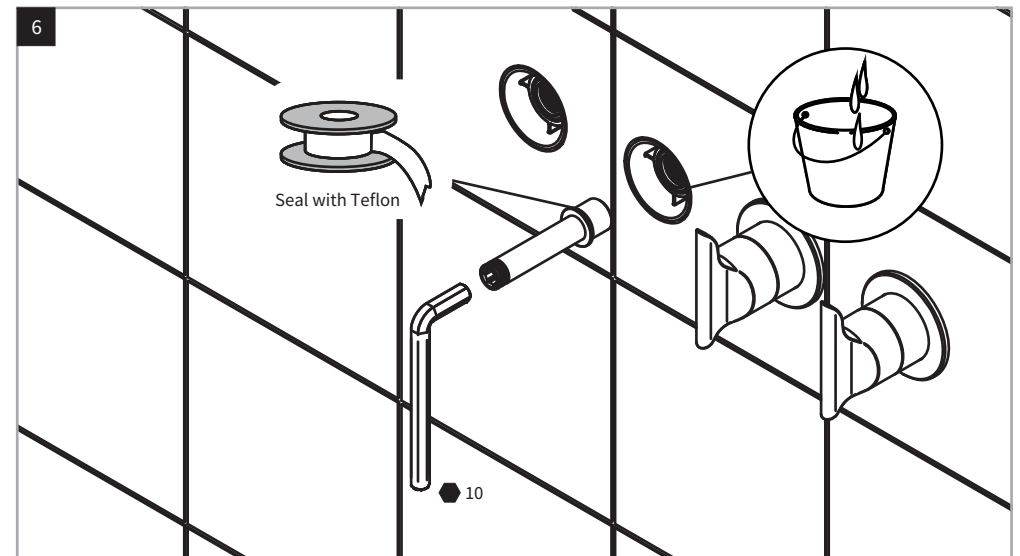
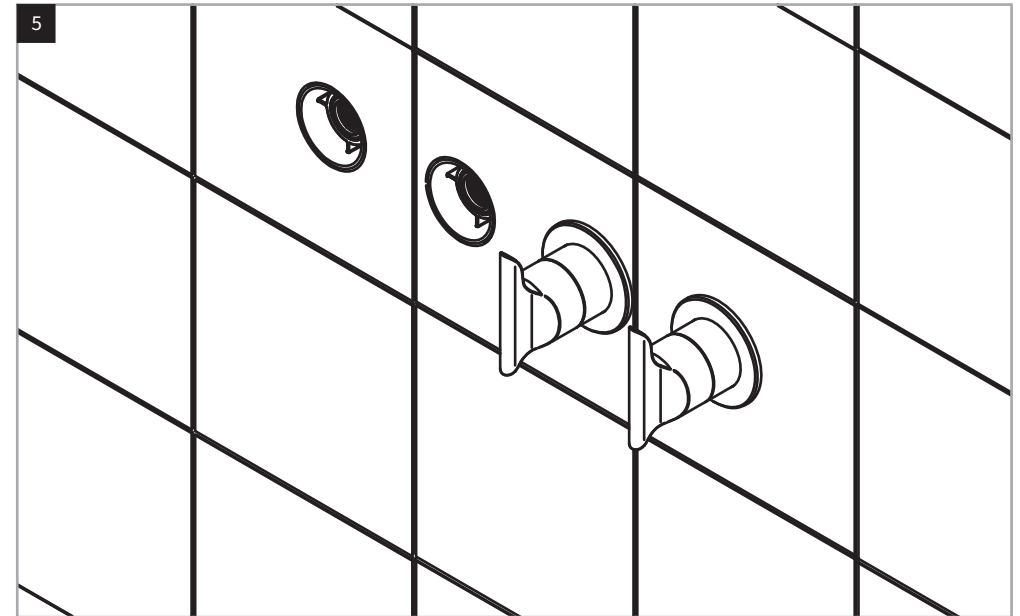
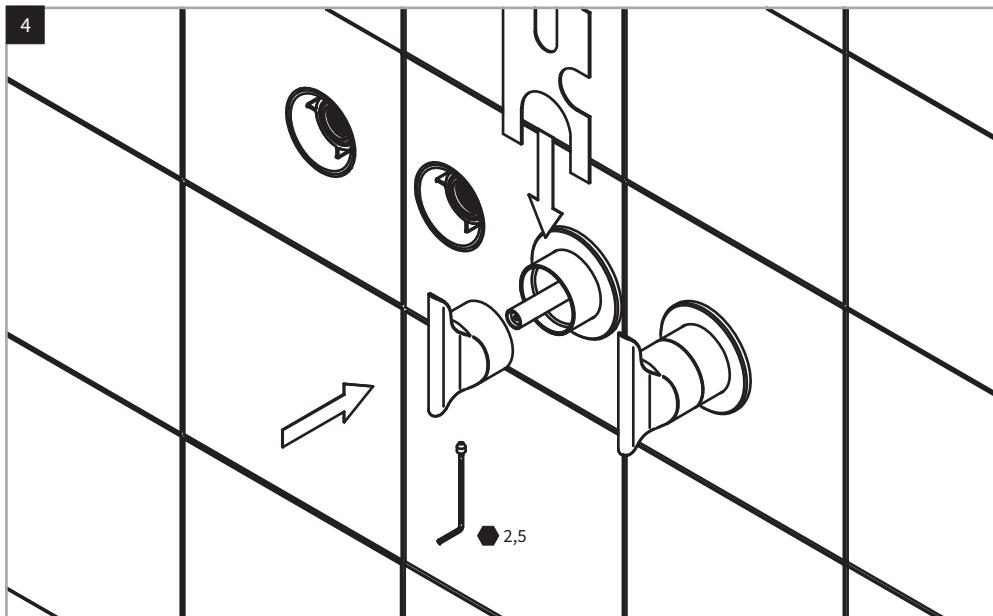
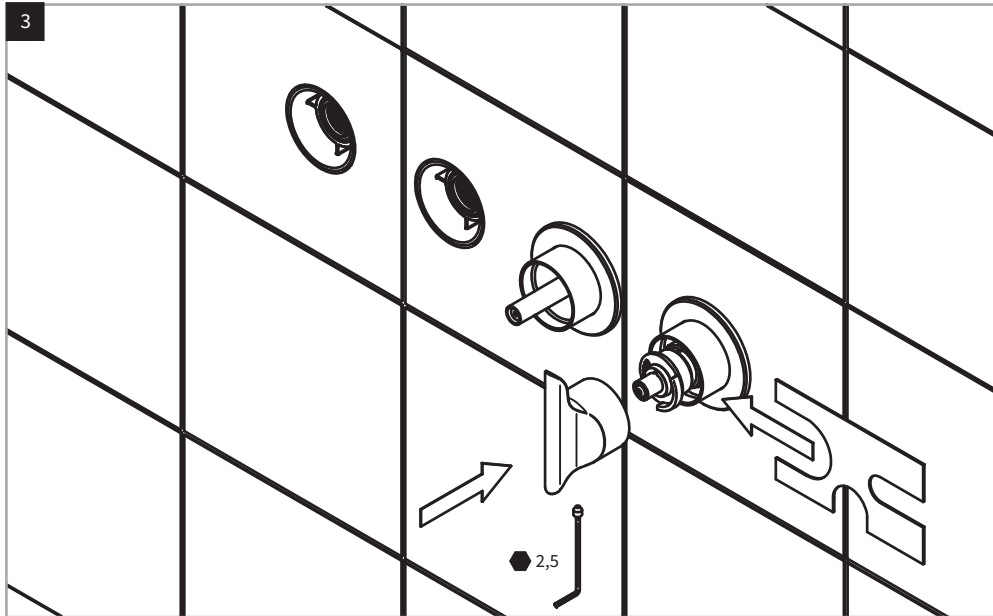


PRE-INSTALLATION INFORMATION

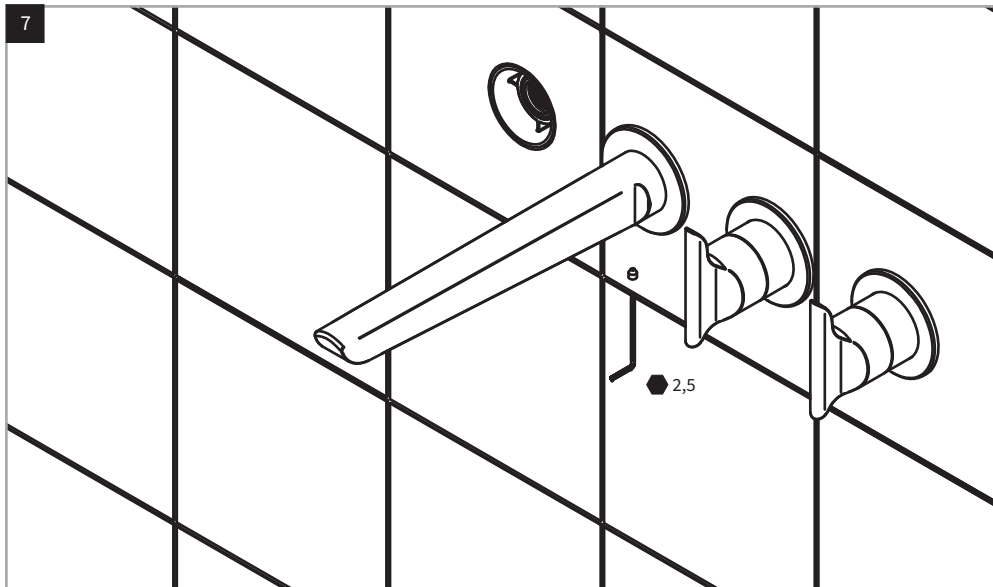


INSTALLATION

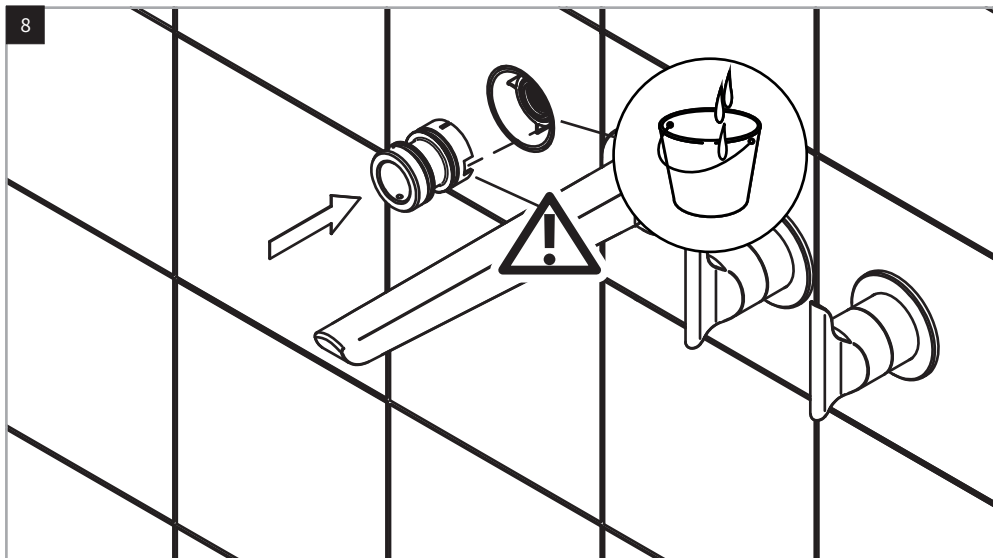




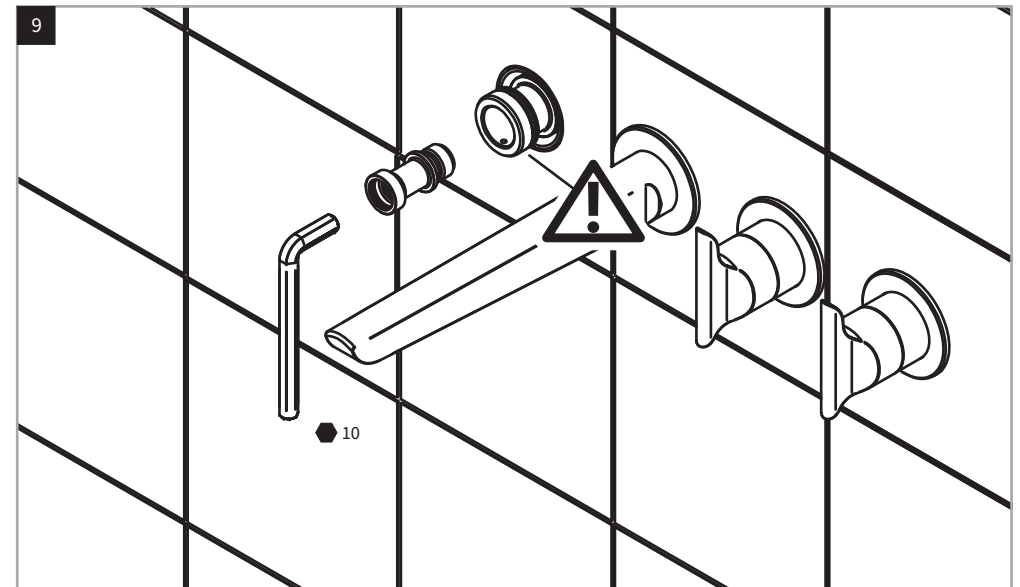
ATTENTION: Check the cleaning of the indicated areas before proceeding with the installation of the aesthetic parts, drain a good quantity of water to clean the system from dirt and residues.



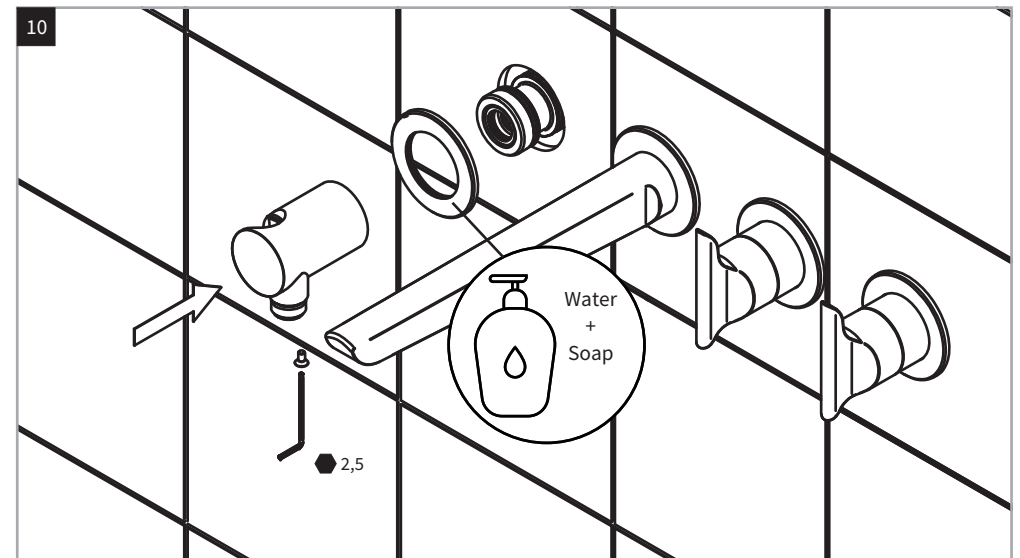
ATTENTION: Orient and lock the spout.



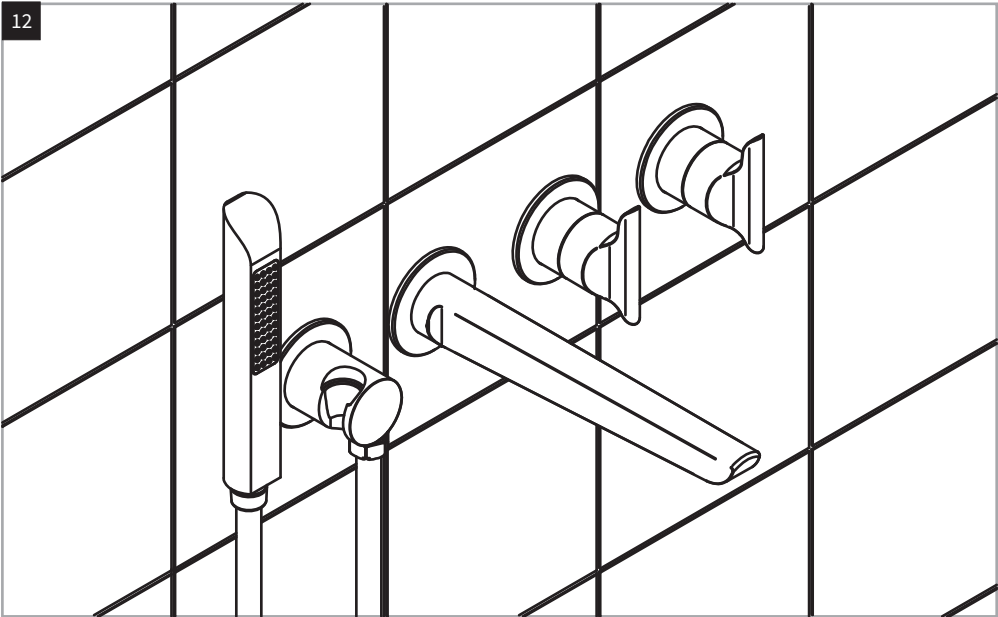
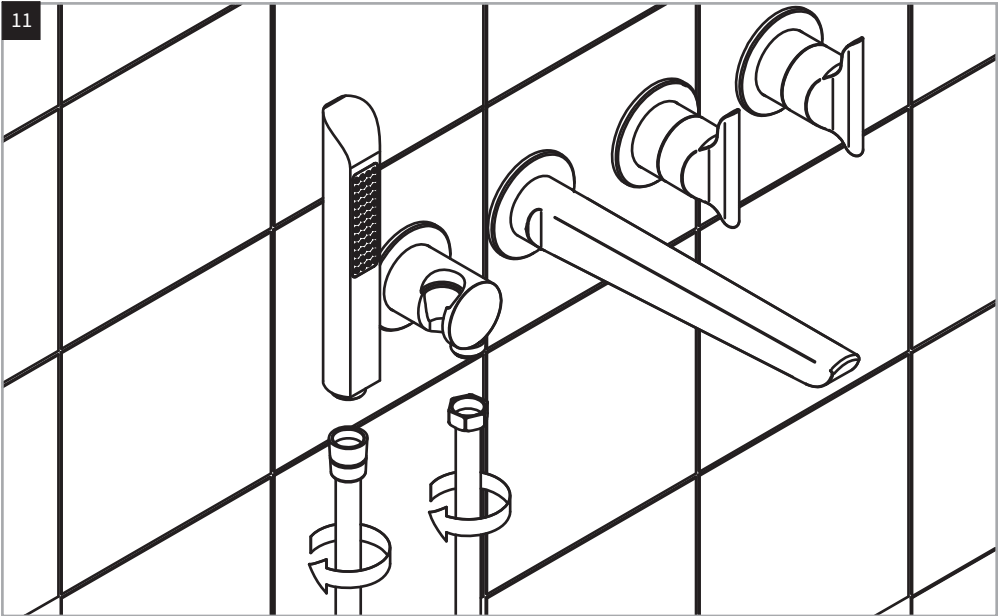
ATTENTION: Check the cleaning of the indicated areas before proceeding with the installation of the aesthetic parts. Align component properly.



ATTENTION: Be careful not to damage the O-rings



ATTENTION: Orient and lock the shower support. Be careful not to damage the O-rings.



MAINTENANCE

