



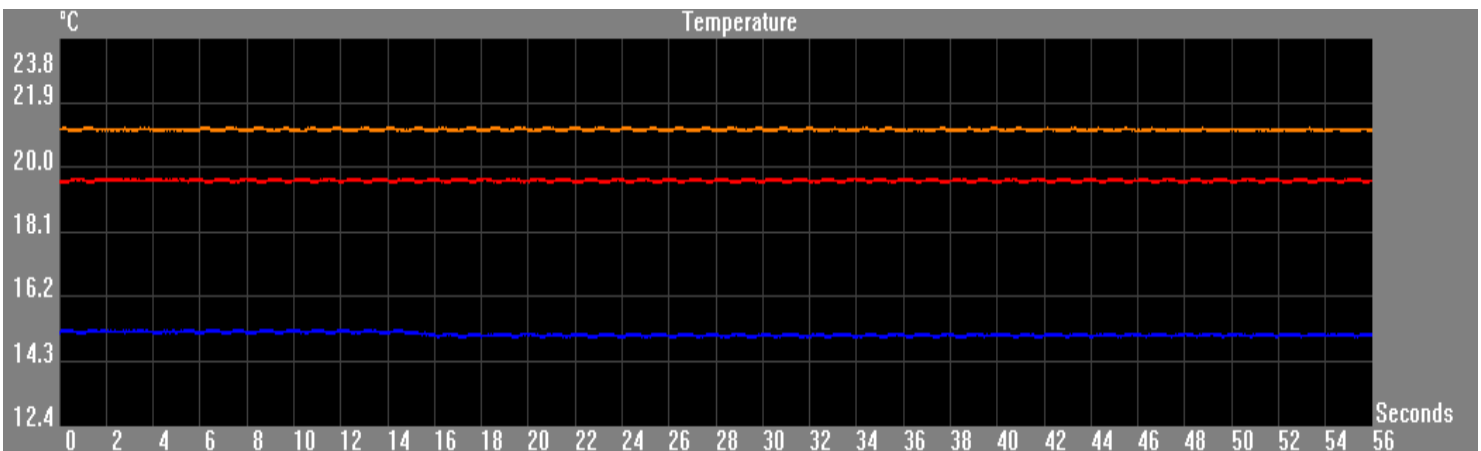
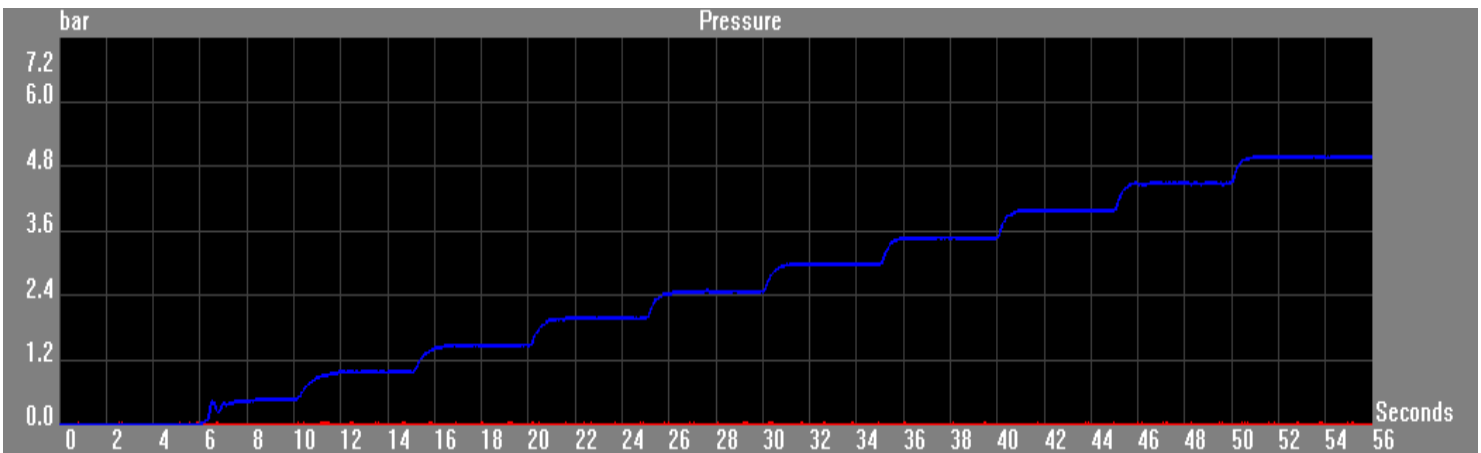
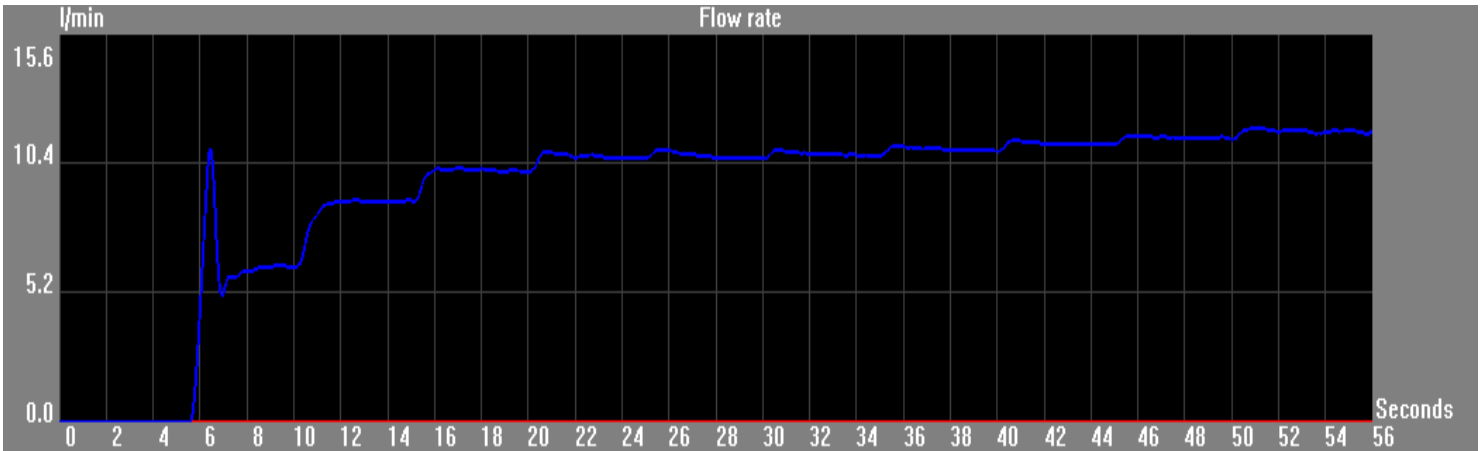
# STEP FLOW RATE REPORT

Crosswater Holdings Ltd - Lake View House, Dartford DA1 5FU

## Component data

Client :	WO0370WC	Model :	A
Category :	A	Serial number :	A
Line :	A	Test description :	BASIC FLOW

Station 1



Start date :	27/03/2017 - 14:05	Operator :	Peter Memmott
Test duration :	56 (Seconds)	Signature :	_____



# STEP FLOW RATE REPORT

Pag. 2/2

Crosswater Holdings Ltd - Lake View House, Dartford DA1 5FU

## Component data

Client :	WO0370WC	Model :	A
Category :	A	Serial number :	A
Line :	A	Test description :	BASIC FLOW

## Test settings:

**Station 1**

Starting pressure:	0.00 bar	<input type="checkbox"/> Open hot
Step:	0.50 bar	<input type="checkbox"/> Open by-pass
Stabilisation time:	5 "	<input checked="" type="checkbox"/> Open cold
Steps number:	11	

Pitch	Cold pressure (bar)	Cold flow rate (l/min)	Cold temperature (°C)
1	0.00	0.00	15.19
2	0.49	6.22	15.22
3	0.99	8.91	15.16
4	1.50	10.06	15.12
5	1.99	10.64	15.06
6	2.49	10.58	15.10
7	2.98	10.72	15.07
8	3.49	10.90	15.12
9	3.99	11.16	15.09
10	4.50	11.37	15.09
11	4.99	11.70	15.11

Notes:

Start date : 27/03/2017 - 14:05

Operator : Peter Memmott

Test duration : 56 (Seconds)

Signature : \_\_\_\_\_