

PRODUCT DATA SHEET

crosswater[®]



PRODUCT CODE

OXSLTC1200A

RANGE

Optix 10

DESCRIPTION

Optix Soft Close Sliding Door 1200 Box A Slate

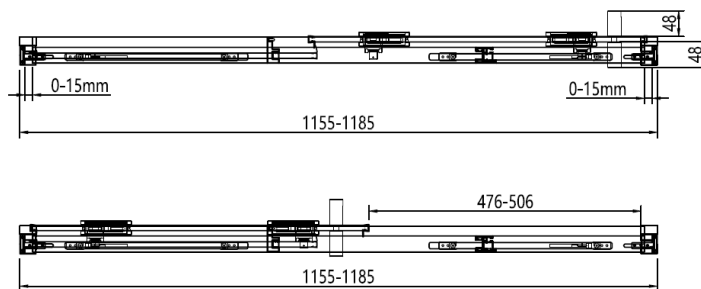
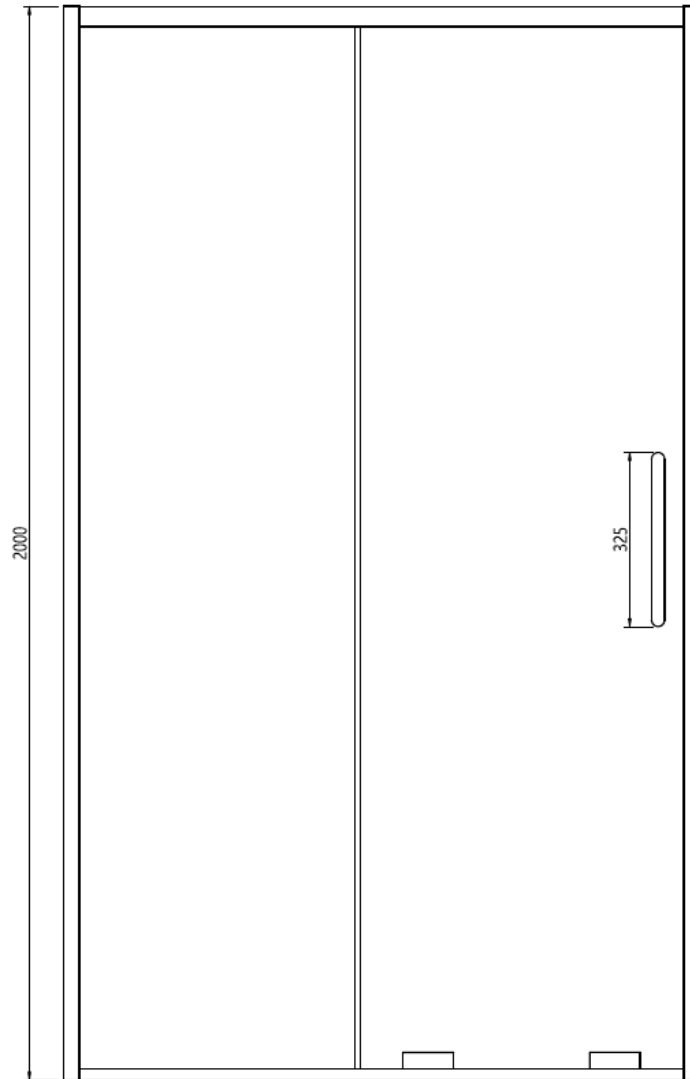
CATEGORY	Showering
WARRANTY DETAILS	Lifetime
COLOUR	Slate
FINISH APPLICATION	PVD
PRIMARY MATERIAL	Glass
INSTALL TYPE	Wall Fixed
PRODUCT HEIGHT MM	2000
PRODUCT LENGTH MM	1200
PRODUCT NET WEIGHT KG	41
STANDARDS	EN14428

HANDING SHOWERING	Universal
GLASS THICKNESS	10mm
EASY CLEAN	Yes
MAGNETIC DOOR STRIPS	No
POWER SHOWER PROOF	Yes
NUMBER OF DOORS	1
SOFT CLOSING DOORS	Yes
SAFETY GLASS	Yes
REMOVABLE SEALS	Yes
QUICK RELEASE ROLLERS	Yes
WET ROOM COMPATIBLE	Yes
DOOR A INFORMATION	Fixed Panel
DOOR ADJUSTMENT	1155-1185 (1170-1185 with side panel)

TECHNICAL DIMENSIONS

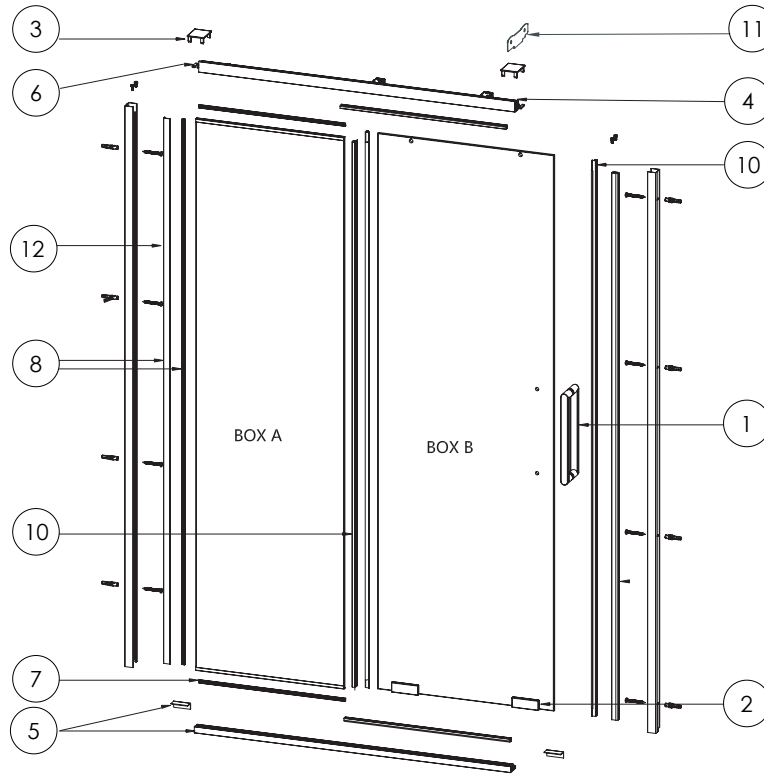
Dimensions in mm unless otherwise specified.

Tolerances (per material type) apply.



SPARES LIST

Only the parts labelled are available as spares.



NUMBER	PART CODE	DESCRIPTION
1	OPHANDLEBZ	Optix Handle Brushed Bronze
	OPHANDLET	Optix Handle Slate
2	OPMOVEBZ	Optix Self Cleaning Roll Br Bronze
	OPMOVET	Optix Self Cleaning Roll Slate
3	OPPROFILECAP	Optix Wall Profile Cover Caps
4	OPSLIDE	Optix Soft Close Mechanism x2
5	OPSLIDERBASE4BZ	Optix Slider Bott Rail 1637 A12/13 Bbroz
	OPSLIDERBASE4T	Optix Slider Bott Rail 1637 A12/13 Slate
6	OPSLIDERTRIMBZ	Optix Slider Top Base Trim 759mm Bbroz
	OPSLIDERTRIMPT	Optix Slider Top Base Trim 759mm Slate
7	OPSLIDSEAL1	Optix Slider Fix Panel Seals x2 A11
8	OPSLIDSEAL2	Optix Slider Wall Pro Seals A5&A7
9	OPSLIDSEAL3	Optix Slider Seals A9 & A10
10	OPSLIDSEAL4	Optix Slider Seal B2
11	OPTIXINSTALLKIT	Optix Installers Tool Kit
12	OPWALLPROFILESEAL	Optix Wall Profile Seal
	OXSLIDEPACKBZ	Optix Blister Slider Brushed Bronze
	OXSLIDEPACKT	Optix Blister Slider Slate