

# PRODUCT DATA SHEET



## PRODUCT CODE

OXPDZC1000A

## RANGE

Optix 10

## DESCRIPTION

Optix Pivot Door Inline Panel 1000 Box A Brushed Bronze

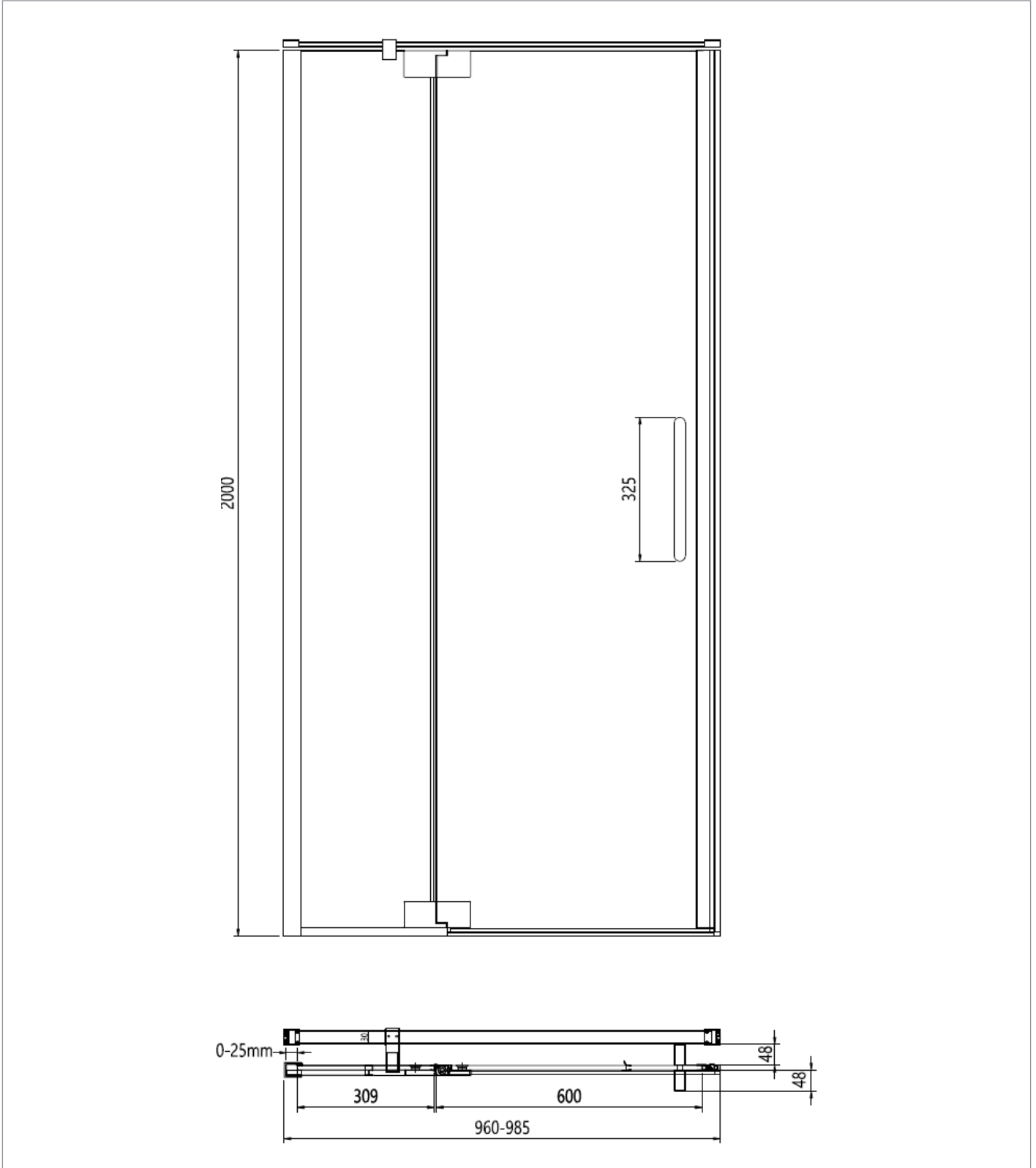
CATEGORY	Showering
WARRANTY DETAILS	Lifetime
COLOUR	Brushed Bronze
FINISH APPLICATION	PVD
PRIMARY MATERIAL	Glass
INSTALL TYPE	Wall Fixed
PRODUCT HEIGHT MM	2000
PRODUCT LENGTH MM	1000
PRODUCT NET WEIGHT KG	27
STANDARDS	EN14428

HANDING SHOWERING	Universal
GLASS THICKNESS	10mm
EASY CLEAN	Yes
MAGNETIC DOOR STRIPS	Yes
POWER SHOWER PROOF	Yes
NUMBER OF DOORS	1
SOFT CLOSING DOORS	No
SAFETY GLASS	Yes
REMOVABLE SEALS	Yes
QUICK RELEASE ROLLERS	No
WET ROOM COMPATIBLE	Yes
DOOR A INFORMATION	Fixed Panel
DOOR B INFORMATION	Moving door
DOOR ADJUSTMENT	960-985 (970-995 with side panel)

## TECHNICAL DIMENSIONS

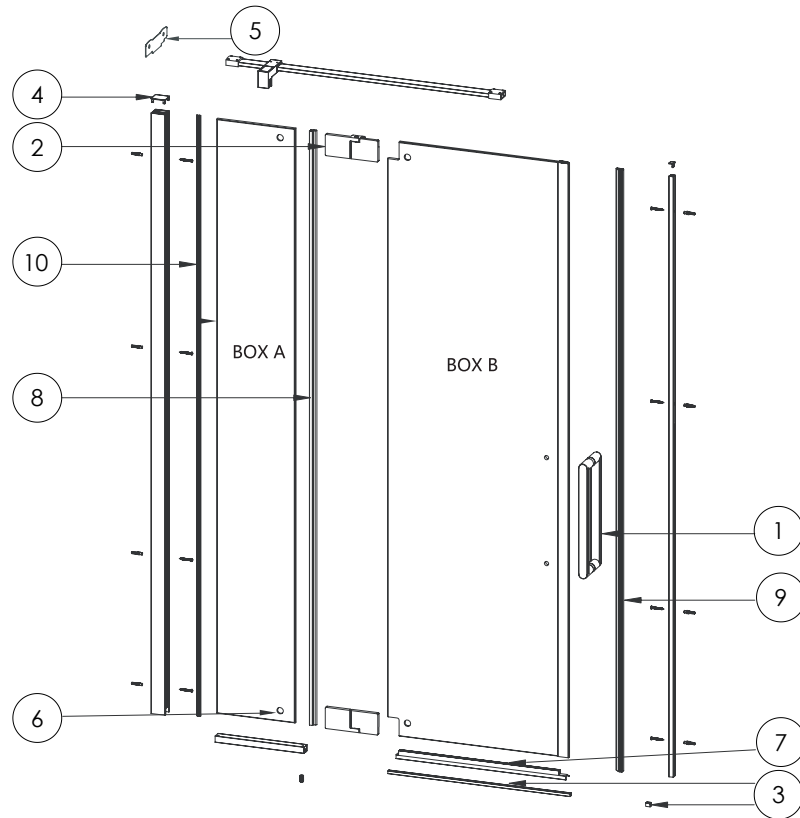
Dimensions in mm unless otherwise specified.

Tolerances (per material type) apply.



## SPARES LIST

Only the parts labelled are available as spares.



NUMBER	PART CODE	DESCRIPTION
1	OPHANDLEBZ	Optix Handle Brushed Bronze
	OPHANDLET	Optix Handle Slate
2	OPPIVOTINHINGEBZ	Optix Pivot Inline Hinge x2 A3 Br Bz
	OPPIVOTINHINGET	Optix Pivot Inline Hinge x2 A3 Slate
3	OPPIVOTINPROFILE5BZ	Piv Inline Bot Prof 690mm A12/13 B Bz
	OPPIVOTINPROFILEST	Piv Inline Bot Prof 690mm A12/13 Slate
4	OPPROFILECAP	Optix Wall Profile Cover Caps
5	OPTIXINSTALLKIT	Optix Installers Tool Kit
6	OPTIXPIVOTINCAPBZ	Optix Pivot Inline Cover C Br Bronze
	OPTIXPIVOTINCAPT	Optix Pivot Inline Cover C Slate
7	OPTIXPIVOTINSEALS1	Optix Pivot Inline A14 Seal 665mm
8	OPTIXPIVOTINSEALS2	Optix Pivot Inline A7 Seal 1981mm
9	OPTIXPIVOTINSEALS3	Optix Piv Inline A16 Mag Seal 2000mm
10	OPWALLPROFILESEAL	Optix Wall Profile Seal
11	OXPIVOTLINEPACKBZ	Optix Blister Pivot Inline Br Bronze
	OXPIVOTLINEPACKT	Optix Blister Pivot Inline Slate