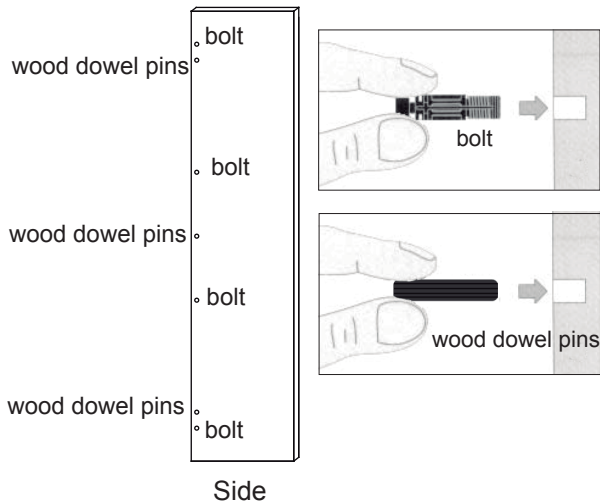


## WALDORF WC/ CISTERN SURROUND (WF5492XX)

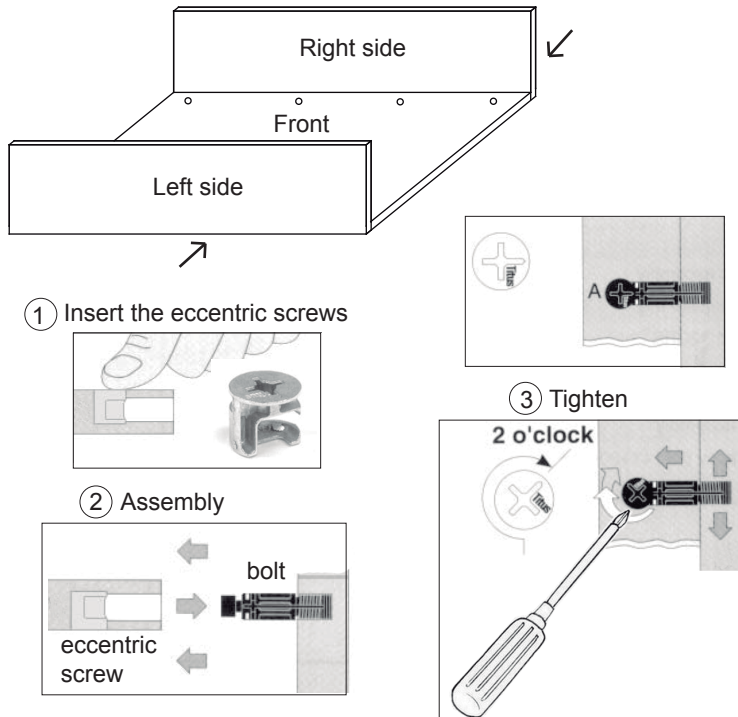
### Step 1

Place the sides on a working table.  
Insert the bolts and wood dowel pins inside the holes.



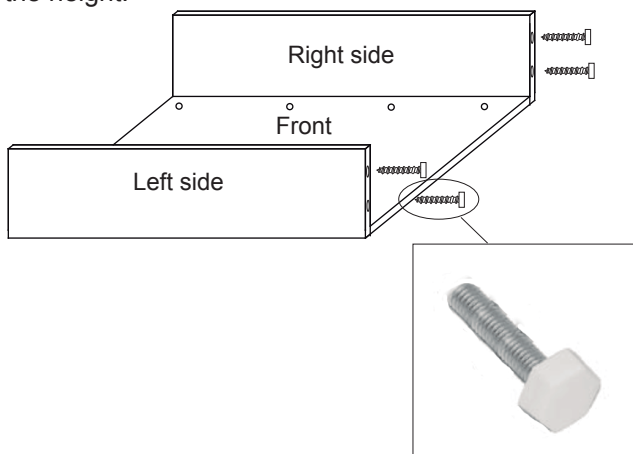
### Step 2

Insert the eccentric screws in the front.  
Place the right and left side next to the front.  
Assemble the pieces and tighten the eccentric screws using a screwdriver.



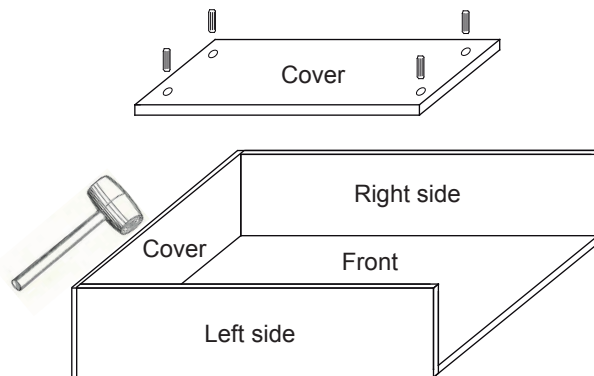
### Step 3

Insert the adjustment screws in both sides to adjust the height.



### Step 4

Insert the wood dowel pins in the cover.  
Assemble the cover with both sides by means of the wood dowel pins and use a plastic hammer to put together all the pieces perfectly.



Please read these instructions carefully before starting installation and keep in a safe place for future reference. ENSURE the room is well heated and ventilated.

Check the contents of the pack carefully before installation. Bauhaus will not be held responsible for any de-fit / re-fit costs where faulty product has been fitted.

If any fault is found with materials or workmanship, it must be reported immediately to the manufacturer. Remedial action will be taken, based on information received, on condition that: 1. Full details are supplied to the manufacturer; 2. The product has not been modified or tampered with; 3. The manufacturer is informed of any damage/shortages prior to installation. 4. The product has not been installed, or attempts have been made to install.

We do not accept responsibility for any problems that may occur through incorrect installation.