

# PRODUCT DATA SHEET



## PRODUCT CODE

TL416FS

## RANGE

3ONE6 Lever

## DESCRIPTION

3ONE6 Lever Bath Floor Standing Filler  
Stainless Steel

WEBSITE LINK [Click Here](#)

CATEGORY	Brassware
WARRANTY DETAILS	15 Years
COLOUR	Stainless Steel
FINISH APPLICATION	Brushed
PRIMARY MATERIAL	316 Stainless Steel
INSTALL TYPE	Floor Standing
PRODUCT WIDTH MM	150
PRODUCT HEIGHT MM	1018
PRODUCT DEPTH MM	389
PRODUCT NET WEIGHT KG	11.05
STANDARDS	BS EN 817:2008

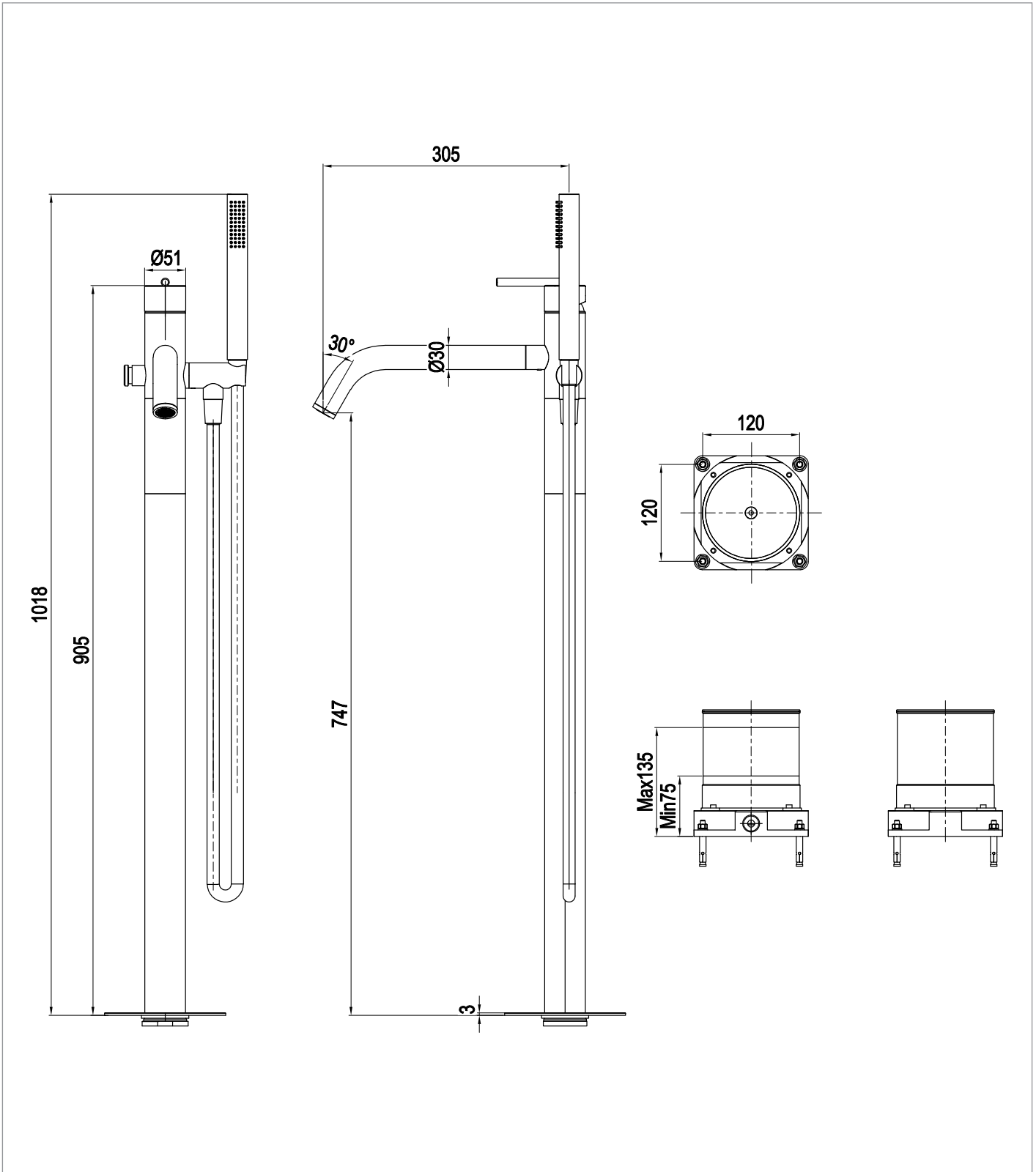
MINIMUM PRESSURE (BAR)	3
MAX WORKING PRESSURE (BAR)	5
NUMBER OF OUTLETS	2
NUMBER OF FUNCTIONS	2
HEADWORK	40mm Single lever ceramic cartridge
SPOUT PROJECTION	300
SWIVEL SPOUT	No
INLET CONNECTIONS THREAD	G1/2"
WASTE INCLUDED	No
ANTI-SCALD	No
ENERGY SAVING	No
SHOWER HOSE & HANDSET ARE INCLUDED	Yes

PRESSURE (BAR)	0.2	0.5	1	2	3	4	5
PRIMARY FLOWRATE					14.18	16.47	18.45
HANDSET FLOWRATE					19.15	22	24.7
MESSAGE FLOW RATE							
AIR FLOW RATE							
WIRE FLOW RATE							
WATERFALL FLOW RATE							
MIST FLOW RATE							
HANDSPRAY FLOW RATE							

## TECHNICAL DIMENSIONS

Dimensions in mm unless otherwise specified.

Tolerances (per material type) apply.



## SPARES LIST

Only the parts labelled are available as spares.

--